

REPORTING PERIOD START	4/1/2020
REPORTING PERIOD END	6/30/2020
WATERSHED REGION	7
NATIONAL OBJECTIVE	N/A – Planning Activities
ELIGIBLE ACTIVITY	Planning; HCDA Sec. 105(a)(12)
EXPENDITURE/COMPLETION STATUS	\$12,781.65 (thru June 25, 2020)

RCBG PROGRAM QUARTERLY REPORT

REPORTING CONTACT INFORMATION

CONTACT PERSON NAME	Rachelle Sanderson
CONTACT PHONE	225.383.5203
CONTACT EMAIL	rsanderson@crpcla.org

WATERSHED COORDINATION METRICS

HOURS OF WORK PERFORMED (by Watershed Coordinator)	415.25 hours
NUMBER OF MEETINGS FACILITATED	May 21, 2020 RSC virtual meeting and June 30, 2020 RSC virtual meeting
ATTENDANCE PER MEETING	May 21 meeting (29 people) and June 30 meeting (38 people)
DIVERSITY OF DISCIPLINES/INTERESTS REPRESENTED AT MEETINGS	RSC members, CRPS staff, Parish staff, concerned citizens, DOTD modeling contractors, and state employees
DESCRIPTION OF OTHER COORDINATION ACTIVITIES UNDERTAKEN	Please see submitted attachments (1) one-to-one conversations with each member of the RSC for coordination and onboarding (2) Coordination meetings with OCD for RCBG and general LWI info meetings (3) Coordination meetings with LSU about deliverables for Region 7 LWI work (4) Coordination meetings with OCD contractors about deliverables for Region 7 LWI work (5) Watershed discovery process coordination meetings for Maurepas Watershed (6) Coordination meetings with other Watershed Coordinators

REGIONAL CAPACITY ANALYSIS AND REGULATORY REVIEW METRICS

DESCRIPTION OF DELIVERABLES COMPLETED BY LSU OR WITH INPUT BY LSU	In progress. No deliverables completed during this quarter. Main deliverables will include an overview of (1) Subdivision rules, zoning, and regulations in Region 7 (2) Plan evaluation and mapping of issue networks across the region (3) Network mapping governance and actor networks based on planning documents (4) Governance work that supports activities provided by CSRS
--	--

PUBLIC OUTREACH METRICS

NUMBER OF CITIZEN INTERACTIONS OR COMMUNITY-ORIENTED EVENTS HELD	one-to-one conversations with Kim Coates (Tangipahoa), Marie Constantin (East Baton Rouge), Asti Davis (East Feliciana) on parish and municipal specific feedback and ideas for what they've been experiencing
NUMBER OF ATTENDEES AT EVENTS	1 person per conversation
NUMBER OF PUBLIC INFORMATION PIECES DISSEMINATED	0
NUMBER OF CONTINUING EDUCATION HOURS OR CERTIFICATIONS AWARDED TO PARISH, MUNICIPAL OR REGIONAL STAFF	0
NUMBER OF CONTINUING EDUCATION HOURS OR CERTIFICATIONS AWARDED TO LOCAL PROFESSIONALS	0
DESCRIPTION OF OTHER PUBLIC OUTREACH ACTIVITIES UNDERTAKEN	N/A

CRS PARTICIPATION METRICS

CRS SCORES AND/OR NUMBER OF PARTICIPATING COMMUNITIES (one input per year)	Input in Q1 2020 report
---	-------------------------

NARRATIVE

Please describe additional capacity-building activities conducted during the quarter.
See attached narrative document



REGION 7

2020 QUARTER 2 (04/01/2020 – 06/30/2020) REPORT NARRATIVE

Rachelle Sanderson
Regional Watershed Coordinator (Region 7)
Capital Region Planning Commission

WHAT PROGRESS HAS YOUR ORGANIZATION ACHIEVED IN MEETING THE GOALS AND OBJECTIVES LAID OUT IN THE PROPOSAL?

MAY 21, 2020 REGIONAL STEERING COMMITTEE MEETING

The May 21 RSC meeting focused on onboarding RSC members by explaining the purpose of the committee, a general timeline of activities, roles and responsibilities, and finalizing RSC membership. Minutes for this meeting and a complete list of RSC members are attached to the report

JUNE 30, 2020 REGIONAL STEERING COMMITTEE MEETING

The June 30 RSC meeting focused on adopting bylaws, a workplan, and the election of a Chair and Vice-Chair for the Region 7 Regional Steering Committee. Minutes for this meeting, the bylaws, and adopted workplan are attached to the report. The Chair is Ross Liner who is the Director of St. Tammany Parish's Planning and Development – Engineering department. The Vice-Chair is Chuck Berger who is a staff engineer at Louisiana's Department of Environmental Quality.

CAPACITY BUILDING

Capacity building for this quarter focused on building relationships across the region and identifying shared challenges and opportunities. This was done by completing, or beginning, the following activities:

One-to-one conversations with each Regional Steering Committee member

These conversations were scheduled ahead of the June 30 Regional Steering Committee meeting and focused on developing a relationship between the Regional Watershed Coordinator and the committee member, determining overall perception of LWI and the RSC, and identifying shared opportunities and challenges. 17 total meetings were conducted, and the following are a list of shared challenges and opportunities that were identified as themes from those conversations:

- Shared challenges mean that there are also shared opportunities
- improving quality of life is important
- tension exists and we must acknowledge that it is both historical and current
- This is, for many folks, the first opportunity to collaborate
- This (watershed) work is necessary and it intersects with all facets of our lives
- People are smart and resourceful and have witnessed change
- RSC members are busy and increasing capacity is necessary

One-to-one conversations with Regional Watershed Coordinators across the state

These conversations are ongoing and focus on developing personal relationships with each Watershed Coordinator for the long-term goal of building state-wide capacity to identify shared challenges, opportunities, and a relationship that allows for honest discussions and trust to share resources. Building these relationships will be necessary when considering how regions shape and determine region-specific actions with regards to programs, policies, and most importantly geographic scope and the associated governance structure for the watershed coalitions. Seven total meetings will be conducted.

LSU DELIVERABLES

CRPC has been coordinating with the LSU contract team on a weekly basis to focus on the following items:

Development of replicable methods

The quarter 1 report referenced a deliverables document that outlined the deliverables. Among those deliverables are an existing conditions analysis that seeks to identify consistent zoning and subdivision rules, a plan evaluation, and an identification of network maps to identify issue and governance networks. To ensure that the work is in alignment with the needs of the region, and that the work is replicable, CRPC has been working closely with LSU to develop methods for the work. This work is still in draft form and it is anticipated that the methods will be finalized by the end of summer 2020.

Consistency and leveraging deliverables of OCD's contractors

Additionally, LSU and CRPC have been in conversations with OCD's contractors to ensure that work is not being duplicated. During these conversations, it was made clear that some deliverables will need to be altered to leverage the work of other contractors. Several conversations have been dedicated to this.

WHAT CHALLENGES OR OBSTACLES HAVE BEEN FACED IN MEETING THESE GOALS AND OBJECTIVES?

2020 has been a challenging year across the globe and it is important to recognize that this work is occurring during a global pandemic, hurricane season, and a racial justice movement that has captured global attention. RSC members have their own emergency obligations that are related to their jobs, organizations, families, etc. so the continuation of this work in the face of overlapping crises shows their dedication and ability to adapt.

COVID-19

Louisiana began experiencing a significant increase in COVID-19 cases in mid-to-late June. With this uptick in cases, Louisianans are being asked to adapt, yet again, and to take additional precautionary measures to reduce the spread of COVID-19. As of July 13, 2020 1,710 new COVID-19 cases are being reported and 94% of those cases are a result of community spread (<http://ldh.la.gov/Coronavirus/>).

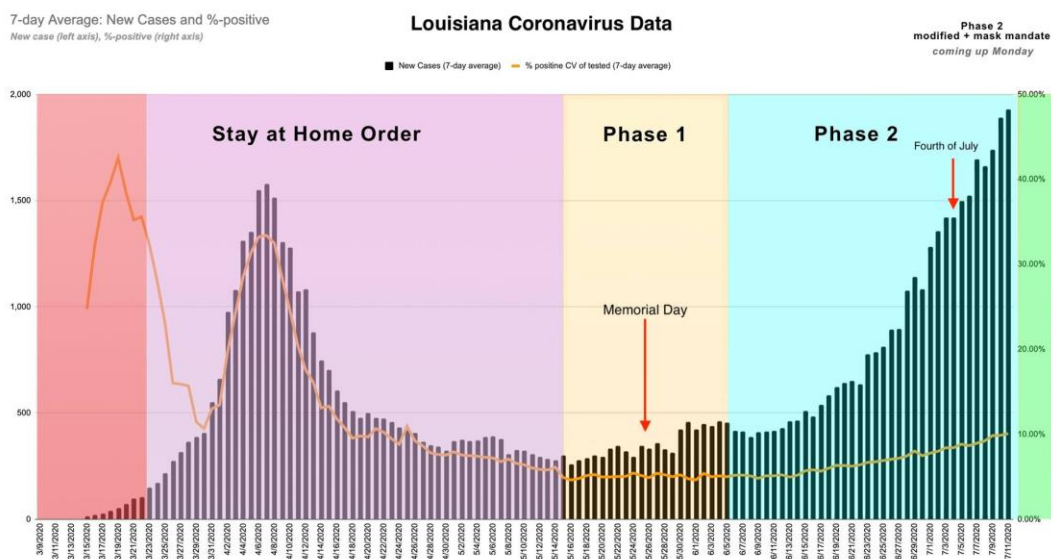


Figure 1: Seven-day average of new cases and percent testing positive from March 9, 2020 to July 11, 2020. Source: Louisiana Coronavirus Data https://www.louisianacoronavirusdata.org/?fbclid=IwAR1Mrn_d5fk1mVLxluV1tFUKRNJczaPjBTVqoJT5SOSL-S_zs9fMjqDM84o modified from Louisiana Department of Health <http://ldh.la.gov/Coronavirus/>.

TROPICAL STORM CRISTOBAL

Tropical Storm Cristobal was the earliest third named storm in the North Atlantic basin on record. The storm formed on June 1 over the Bay of Campeche, made landfall in Campeche on June 3, and then made landfall as a tropical storm on June 7 in southeast Louisiana with winds of 50 mph. Many RSC members have emergency obligations, meaning they were working overtime for a hurricane, on top of working overtime for COVID-19.

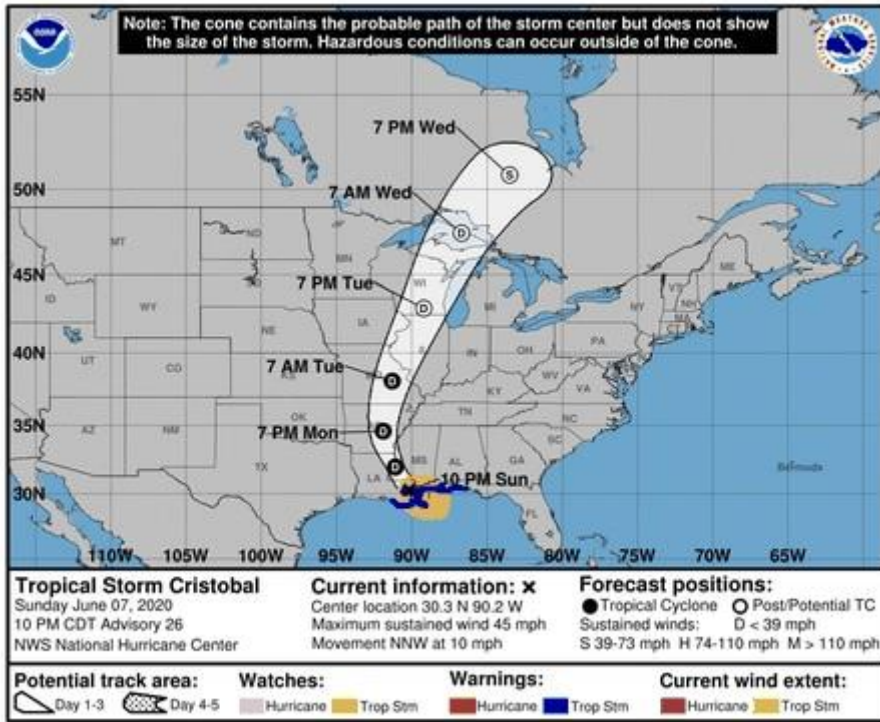


Figure 2: National Hurricane Center advisory for June 7, 2020 10 PM CDT. Source <https://www.nhc.noaa.gov/>.

RACIAL JUSTICE PROTESTS, DEMONSTRATIONS, ETC.

The eruption of a burgeoning racial justice movement across the globe in response to the murder of multiple Black men and women because of police brutality has created a ripple effect across communities. As of June 29, 2020, Louisiana alone has held protests, marches, vigils, and demonstrations in over 20 municipalities across the state. Many of which have held multiple demonstrations. This movement has forced our federal government, state, parishes, and municipalities to respond to the demands being made in their cities. Everything from ending traditional Parish festivals [that romanticize the Anetebellum period](#), to [renaming schools](#), and the [removal of board members](#) as a result of their apathy or refusal to adapt.

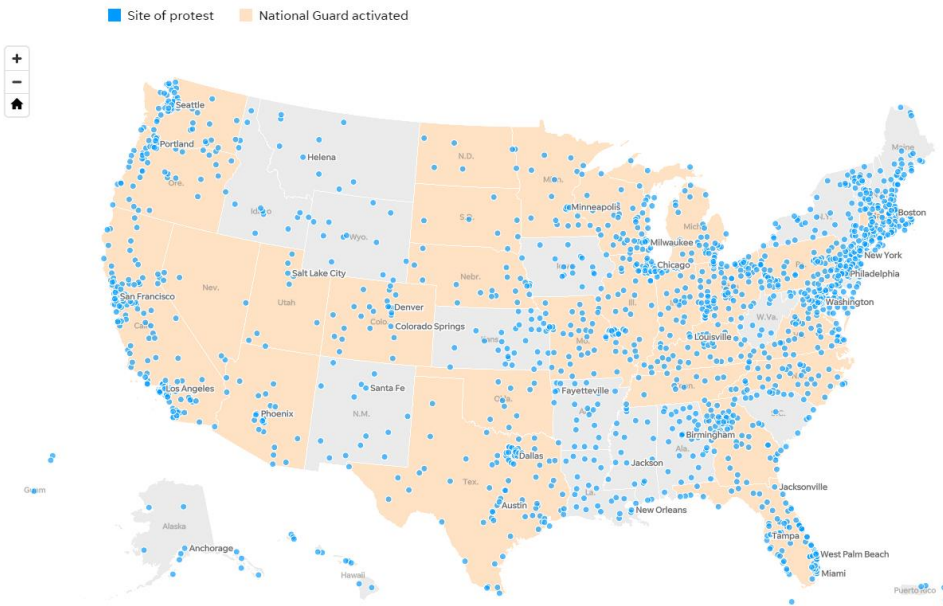


Figure 3: Sites of protests (in blue) nationwide because of the murder of George Floyd through June 29, 2020. Source <https://www.usatoday.com/in-depth/graphics/2020/06/03/map-protests-wake-george-floyds-death/5310149002/>.

HAVE THE GOALS AND OBJECTIVES CHANGED? HOW?

The goals and objectives have not changed.

REGION 7 STEERING COMMITTEE MEMBERS

Updated June 30, 2020

NAME	AFFILIATION	EMAIL	ALTERNATE	EMAIL
Bridget Bailey	Tangipahoa Parish	bbailey@tangipahoa.org	Melissa Cowart	mcowart@tangipahoa.org
Chuck Berger (Vice-Chair)	LA-DEQ	chuck.berger@LA.GOV	TBD	TBD
Bobbi Jo Breland	Washington Parish	bjbreland@wpgov.org	Alex Sumrall	alex.sumrall@wpgov.org
Ronny Carter	Lake Pontchartrain Basin Foundation	ronny@saveourlake.org	TBD	TBD
John Clark	Iberville Parish	jclark@ibervilleparish.com	TBD	TBD
Major Coleman	St. Helena Parish	majorcoleman04@yahoo.com	TBD	TBD
Ryan Donadieu	St. James Parish	ryan.donadieu@stjamesparishla.gov	Ryan Larousse	ryan.larousse@stjamesparishla.gov
Michael Enlow	Ascension Parish	michael.enlow@apgov.us	Ron Savoy	rsavoy@apgov.us
Devin Foil	St. John the Baptist Parish	d.foil@stjohn-la.gov	Rene Pastorek	r.pastorek@stjohn-la.gov
Mark Harrell	Livingston Parish	Lohsep1@lpgov.com	TBD	TBD
Ross Liner (Chair)	St. Tammany Parish	rliner@stpgov.org	Jay Watson	jwatson@stpgov.org
Earl Matherne	St. Charles Parish	ematherne@stcharlesgov.net	TBD	TBD
Gary Mego	West Feliciana Parish	gmego@wfparish.org	Emily Cobb	ecobb@wfparish.org
Deitmar Rietschier	Amite River Basin Commission	drietschier@amitebasin.org	TBD	TBD
Tom Stephens	East Baton Rouge Parish - Chief Construction Engineer	tstephens@brla.gov	Fred Raiford	fraiford@brla.gov
James Stewart	East Feliciana Parish	Havek1983@gmail.com	TBD	TBD
Karen Zito	Home Builders of Greater BR	karen@hbagbr.org	TBD	TBD



REGION 7 REGIONAL STEERING COMMITTEE

MEETING PROCEDURES AND BYLAWS

Efforts are supported as a part of the Regional Capacity Building Grant Program featured in the State's Master CDBG-MIT [Action Plan](#)¹ developed in response to Federal Register Notice Docket No. FR-6109-N-02. Regional Steering Committee functions limited to Year 1 Program milestones. This program is administered by Louisiana's Office of Community Development (OCD) and Capital Region Planning Commission (CRPC).

TABLE OF CONTENTS

Table of Contents.....	2
Version History	3
Part I: Background and Purpose	4
Part II: Bylaws.....	5
Attachment A: Template Notice & Certification to Hold Video Conference	9

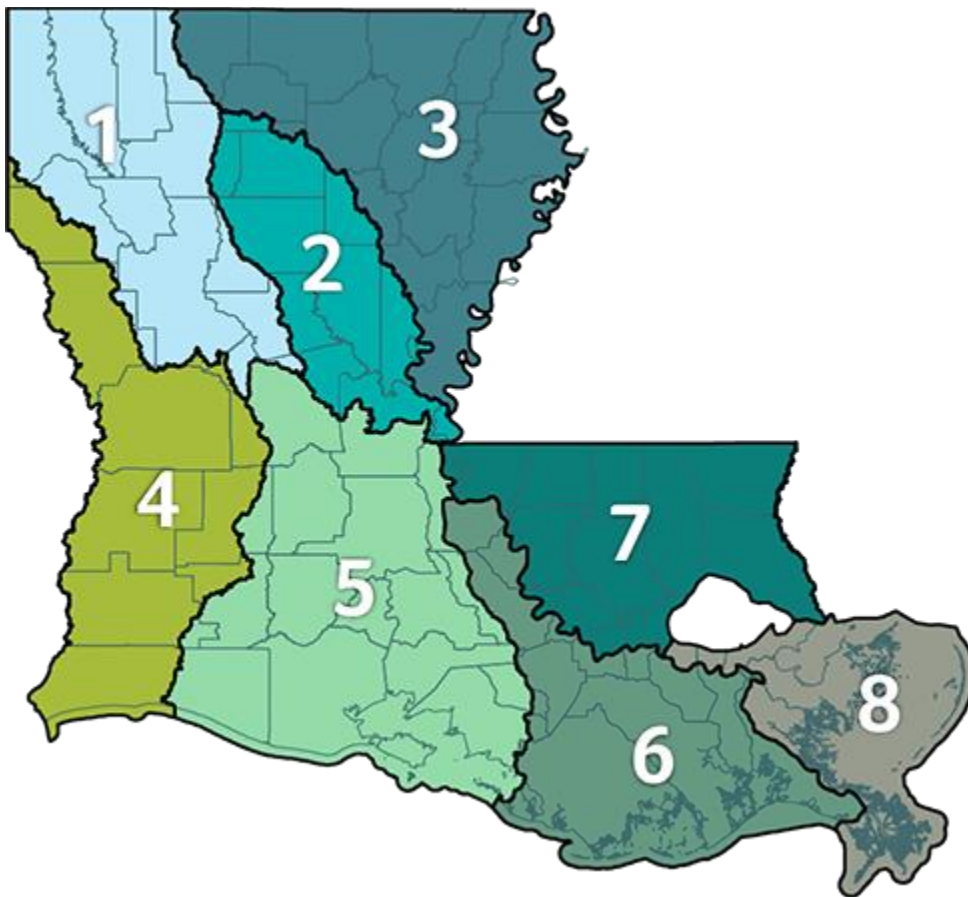
VERSION HISTORY

Version 1	Draft released June 11, 2020.
Version 2	Released July 1, 2020 with recommended changes for adoption from June 30, 2020 RSC meeting. This is the adopted version.

PART I: BACKGROUND AND PURPOSE

1. BACKGROUND

Following the Great Floods of 2016, Gov. Edwards issued an executive order that charged state agencies to coordinate statewide flood risk management efforts through a regional watershed approach, centering decision-making through shared waterways across multiple jurisdictional boundaries. The order identified five state agencies to collaborate on interagency alignment efforts through technical advisory groups, made up of staff from each agency, and the Council on Watershed Management, which oversees all activities associated with the Louisiana Watershed Initiative (LWI). Those agencies are as follows: Coastal Protection and Restoration Authority, Department of Transportation Development, Department of Wildlife and Fisheries, Governor’s Office of Homeland Security and Emergency Preparedness, and the Office of Community Development. Members of the technical advisory groups recommended the eight provisional watershed regions (below) that were then adopted the Council on Watershed Management.



Region 7 includes the following parishes: Ascension, East Baton Rouge, East Feliciana, Iberville, Livingston, St. Charles, St. Helena, St. James, St. John, St. Tammany, Tangipahoa, Washington, and West Feliciana. The Region 7 Regional Steering Committee, hereafter referred to as RSC, is a body comprised of designated individuals who represent individual parishes or the region. RSC members will develop a regional vision and will provide strategic direction for watershed-based decision-making around programs, policies, and projects.

Through the implementation of its programs, efforts of the LWI coordinates enhanced technology, planning, policy and engagement with state agencies, regional partners, and local communities to build support for an

improved, long-term, state and watershed region management framework that can more effectively address mounting flood risks statewide. Funding to support efforts of the Regional Steering Committee (sometimes referred to as the Committee or RSC) is available through Community Development Block Grant (CDBG) recovery dollars from the U.S. Department of Housing and Urban Development to enable proactive approaches to water management statewide. These dollars have been programmed through OCD via the Regional Capacity Building Grant Program, for which the Committee operating here today is charged with:

1. Adopting a fluid work plan
2. Providing input in the development and ultimate implementation of a longer-term, formalized coalition with the ability to adopt different levels of a governance structure for project coordination and prioritization. This long-term entity is intended to outlast specific event-related funding allocations and to provide a sustainable, institutional basis to increase continuity, improve flood resilience, and enable more effective flood prevention within our region.
3. Developing a regional watershed project inventory
4. Participating in the selection of projects totaling up to 5 million dollars, in coordination with the Watershed Initiative Round 1 Projects Program

This Committee will dissolve Spring/Summer 2021, unless extended by OCD or the RSC, upon determination of an appropriate long-term watershed coalition framework. Regional activities are intended to continue under this longer-term coalition framework and will build upon the work, input, and recommendations of this group. For more information on this statewide program, click on the “Regional Capacity Building Program” under the “Programs” tab at watershed.la.gov.

2. PURPOSE

The purpose of the Committee is to provide guidance on project, policy, and programs that advance regional coordination for watershed-based flood risk reduction and water management.

To operate efficiently, consistently, transparently, and in accordance with the goals of the Louisiana Watershed Initiative, this document provides the bylaws for Region 7 of the Louisiana Watershed Initiative.

PART II: BYLAWS

1. OPEN MEETING LAWS

As an advisory committee established for the purpose of providing advice and recommendations to the Council on Watershed Management and the Louisiana Office of Community Development (hereinafter “Grantor”), this Committee constitutes a “public body” under La. R.S. 42:13 and is thus subject to and will follow the Louisiana Open Meetings Law (La. R.S. 42:11-28). Consequently, in the event of any conflict between any term, condition, or provision set forth herein and any mandate of the grantor or Open Meeting Law, the latter shall prevail. In addition, the Committee will follow the guidelines of the Louisiana Office of Community Development and provide notice at least 5 business days of notice for any official meeting of the Committee or sub-committee.” “In accordance with 42:14 of the Open Meetings Laws, any individual or representative of any organization will be allowed to address the Committee on any agenda item that requires a vote be taken. To exercise this privilege, no prior request for placement on the agenda is necessary. Comments from the public may, at the discretion of the Chairperson be entertained at the beginning of the agenda or be after introduction of an item to be voted on and before any discussion by members of the Committee. The Committee shall not be required to entertain comments on any item which does not require that a vote be taken and/or does not appear on the agenda, however, the Chairperson shall have the discretion to hear such comments.

A person wishing to comment on any agenda item may be requested, at the discretion of the Chairperson, to complete a “public comment form” prior to the meeting indicating the specific agenda item that he/she would like to address.

Any person appearing before the Committee in connection with such agenda item shall first state their name and shall limit their remarks to three (3) minutes. However, the Chairperson may deviate from this time limitation unless their decision is overridden by a majority vote of the Committee. All statements shall be directed to the Committee as a whole and not to any specific member. No person shall speak more than once per agenda item. No dialogue between members of the Committee and/or other members of the public shall be permitted, except at the discretion of the Chairperson and then only to clarify the nature of questions and/or comments.

Any person who has been recognized to speak to the Committee on an agenda item shall reserve their comments to matters that are strictly relevant to that specific item. All comments shall be presented in a respectful manner, and participants must conduct themselves orderly and with civility. Comments or language of a lewd, insulting, or provocative nature shall not be tolerated or permitted. Members of the public shall remain silent unless and until recognized as a speaker by the Chairperson. Moreover, personal and derogatory remarks shall be deemed inappropriate. The Chairperson may, therefore, dismiss any speaker who violates the dictates of this policy.

If an organization, formal or informal, wishes to address the Committee on any specific agenda item, then such entity shall select one person as its spokesperson. This limitation shall not prevent others who are associated with the organization from speaking on their own behalf.

2. DUTIES AND RESPONSIBILITIES

Working in conjunction with CRPC, the fiscal agent for Region 7 of the Louisiana Watershed Initiative, this Regional Steering Committee shall assist in the development and delivery of work products requested by the grantor and endeavor to form a permanent watershed coalition within the parameters defined by the Louisiana Watershed Initiative. The RSC shall further exercise such powers and discharge all other duties and responsibilities as dictated by the grantor (OCD the grant applicant (CRPC), and/or the United States Department of Housing and Urban Development. All activities conducted by the RSC shall be in compliance with all federal, state, and local laws and regulations, including the Open Meetings Laws and Public Records Laws of Louisiana contained at Revised Statutes 42:11 et seq., and 44:1 et seq.

Committee members, or their alternates, are expected to attend all meetings. Failure of an RSC member, their alternate, or their designee to attend three consecutive meetings without an explanation acceptable to the other members constitutes grounds for removal from the Committee. Should a member miss more than six meetings in a twelve-month period, the Fiscal Agent will be tasked with coordinating a new appointment amongst parishes represented and may request that the appointing agent for such member appoint another member.

3. COMPOSITION OF THE REGIONAL STEERING COMMITTEE

Criteria and guidance for the composition of the Regional Steering Committee was set forth by the grantor and consists of 17 total members. The Committee shall be composed of 1 representative from each of the 13 parishes which comprise Region 7 of the Louisiana Watershed Initiative and four regional members that meet the educational and professional guidelines provided by OCD for the LWI.

Each representative must designate an alternate to stand-in for them if they are unable to attend a meeting. If the representative and alternate are unable to attend, a designee may be present.

Membership changes to the Committee will be submitted in writing by the entity they are representing to CRPC.

4. ORGANIZATION AND STRUCTURE

The Committee shall appoint a Chairperson and Vice-Chairperson. The Chairperson shall serve as the presiding officer at each meeting, and in the absence of the said Chairperson, the Vice-Chairperson shall serve in that capacity. Moreover, the Chairperson and Vice-Chairperson shall perform all other duties and responsibilities as commonly ascribed to such offices.

Both the Chairperson and Vice-Chairperson shall be elected by a simple majority vote at a regularly scheduled meeting of the Committee. Where a quorum (defined in section 7) is present, each shall serve for the duration of the Committee or, upon the resignation or cessation of membership of such officer, until his or her replacement is elected.

Both the Chairperson and Vice-Chairperson shall be voting members on all matters that come before the Committee.

CRPC, as grant applicant, is hereby designated as the recording Secretary and Clerk for this Committee and does not hold a voting membership. The Secretary shall serve as the primary record keeper for meetings and will support any and all documentation efforts.

5. CONFLICT OF INTEREST

RSC members are subject to the Louisiana Government Code of Ethics and HUD conflict of interest rules, and should not participate in any discussion, deliberation or voting on matters prohibited under those provisions. A committee member must recuse themselves from deliberation and abstain from voting on any matter taken up by the Committee that may affect a business or other entity in which he or she has a significant interest.

6. PROCEDURAL RULES

Except as otherwise dictated by the regulations and mandates of the grantor and United States Department of Housing and Urban Development or the Louisiana Open Meetings Law, this Committee shall be governed in all proceedings by the most current edition of *Robert's Rules of Order, Newly Revised*. The Committee shall meet as prescribed by the fiscal agent, CRPC. All such meetings shall be announced in advance and shall further be open to the public in accordance with Louisiana Open Meetings Law. Moreover, the meetings shall be conducted pursuant to a written agenda approved by the Chairperson of the Committee, working in conjunction with the CRPC, and published in advance in accordance with Open Meeting Law and direction provided by the grantor. At any meeting, only members of the Committee, or their alternates if they are not present, may vote.

7. QUORUM

A quorum shall be defined as a simple majority of the RSC membership. This is required for any action items to be voted upon by the Committee or RSC. Alternates to RSC members, or the designee for that meeting, shall have the same voting rights as the RSC member.

All decisions of the RSC shall be by a majority voice vote of the membership present at a meeting where a quorum is present. If action is to be taken and only the minimum quorum is present (9 attendees), then a two-thirds majority vote is required for an action to pass. All votes shall be recorded in the minutes or records of the RSC.

8. APPROVAL AND AMENDMENT TO BYLAWS

These bylaws and any amendments thereto shall be approved by a majority vote of the members of the Committee. No amendment that restricts or limits the requirements of Open Meetings or Public Records laws will be permitted.

9. DISSOLUTION

This Committee shall exist only until Spring/Summer 2021, unless requested by the Committee or otherwise extended by OCD, as required by OCD acting pursuant to the rules, regulations, and dictates of the grantor and the United States Department of Housing and Urban Development, with the intention that it will be replaced by a permanent entity.

10. POST WRITTEN CERTIFICATION ADVISING THAT RSC IS UNABLE TO MEET IN-PERSON

Pursuant to Section 4 of Proclamation Number JBE 2020-30, prior to holding a virtual RSC meeting in the form of a teleconference or video conference, the watershed coordinator must post a notice in the form of a written certification that certifies the RSC will otherwise be unable to operate due to quorum requirements and therefore is conducting business via teleconference or video conference. Please see Attachment A for a template certification. The written certification can be posted with the meeting notice. Notice requirements are detailed below.

ATTACHMENT A: TEMPLATE NOTICE & CERTIFICATION TO HOLD VIDEO CONFERENCE

Notice and Certification to Hold Video Conference Meeting Region 7 Regional Steering Committee Meeting [Date]

The Regional Steering Committee of Watershed Region [X] will hold a meeting on [Date] at [Time]. This meeting is in accordance with Louisiana Watershed Initiative activities and is integral to providing a sustainable, institutional basis to increase continuity, improve flood resilience, and enable more effective flood prevention within our region.

In an effort to reduce and limit the spread of COVID-19 in Louisiana, and to preserve the health and safety of all members of the public, the Governor has declared the COVID-19 Public Health Emergency and ordered that it is necessary to limit public gatherings in a single place in an effort to avoid individuals being in close proximity to one another.

As a result of the public emergency, the limitations imposed on public gatherings and personal interactions, and the need for a number of members to travel to any physical meeting location from parishes where confirmed cases of COVID-19 have occurred, the [Fiscal Agent for Region X - or - Chair of the Region X Regional Steering Committee] hereby certifies that in order to protect the lives, property, health, safety, and welfare of the citizens of Louisiana, it is necessary to conduct the Regional Steering Committee Meeting on [Date] by teleconference or video conference in order to assure the presence of a quorum of the steering committee members.

Therefore, in accordance with Section 4 of Governor's Proclamation Number 30 JBE 2020: Additional Measures for COVID-19 Public Health Emergency, the Regional Steering Committee of Watershed Region [X] will hold its [Date] meeting virtually. Regional Steering Committee of Watershed Region [X] will utilize the online platform [Name of Platform] to livestream the meeting.

The livestream will be available here [link to website] beginning at [Time] on [Date].
Dial-in information: [insert info here]

Agenda:
[Insert agenda here]

Public Comment Procedure:
Public comments will accepted during the livestream of the meeting. To submit a comment, [insert procedure here].

For questions regarding the virtual committee meeting, please email [email address].

Louisiana Watershed Initiative

Regional Steering Committee

Meeting #1

May 21, 2020

1:30 PM

1. Introductions of Steering Committee Members

- a. Ascension
 - i. No representative.
- b. EBR
 - i. Fred Raiford
- c. E. Feliciana
 - i. No representative.
- d. Iberville
 - ~~i. No representative.~~
- e. Livingston
 - i. No representative.
- f. St. Charles
 - i. Earl Matherne
- g. St. Helena
 - i. No representative.
- h. St. James
 - i. No representative.
- i. St. John
 - i. Devin Foil
- j. St. Tammany
 - i. Jay Watson – alternate.
- k. Tangipahoa
 - i. Ronny Carter
 - ii. Bridget Bailey – present, not on audio.
- l. Washington
 - i. Bobbie Jo Breeland
- m. W. Feliciana
 - i. Gary Mego
- n. Regional
 - i. Dietmar Rietschier
- o. Regional

- i. Karen Zito
 - p. Regional
 - i. Chuck B.
- 2. RSC Orientation
- 3. LSU presentation
 - a. No questions or comments.
- 4. RSC positions
 - a. Suggestions
 - i. E. Feliciana
 - 1. Chuck B. will reach out to parish manager.
 - ii. Carl M. – vote at current meeting.
 - b. Open at large position nominees (1 available)
 - i. Ronny Carter
 - ii. Elizabeth DeEtte Smythe
 - c. Voting
 - i. Members present vote “no preference.”
 - ii. CRPC will decide offline.
- 5. Rachelle Sanderson introduction
- 6. Public comment
 - a. No comments.
- 7. Meeting close out
 - a. Next meeting in June (TBD)
 - b. Location TBD
 - c. Get list of attendees with position, organization, and contact info.



LWI Region 7

Regional Steering Committee (RSC) Meeting

MAY 21, 2020

Meeting ID: 870 0088 4813

Password: 001204

Dial by your location:

1 312 626 6799 US (Chicago), 1 929 205 6099 US (New York)

1 301 715 8592 US (Germantown), 1 669 900 6833 US (San Jose),

1 253 215 8782 US (Tacoma), 1 346 248 7799 US (Houston)

LOUISIANA
WATERSHED
INITIATIVE

working together for sustainability and resilience

Roll Call and Notes

Roll Call: Please let us know if you are an alternate member

This is a public meeting:

- The meeting is being recorded and will be posted for public viewing
 - All comments made in the “chat pod” are written public comments
 - Comments from the steering committee can be made throughout the presentations
 - There is a specific time for public comments at the end of the meeting
-
- ❖ Please use your video camera during the meeting if possible
 - ❖ If anyone is having technical difficulties, please place a message in the chat pod.

RSC Meeting #1 Objectives

- Introduce Regional Steering Committee (RSC) members
- RSC orientation/review roles and responsibilities
- Broad overview of RSC Work Plan and general timeline of activities
- Present nominees to finalize RSC membership



AGENDA

TIME	ITEM
1:30pm – 2:00pm.	<p>1) Regional Steering Committee (RSC) Introductions</p> <ul style="list-style-type: none">• Introduction by each committee member on their background, the organization they represent, and any goals they have for the committee• Identify individuals performing specific roles for meetings: facilitator, meeting minutes, assignments or action items, etc.
2:00pm – 2:45pm.	<p>2) Steering Committee Orientation</p> <ul style="list-style-type: none">• An overview presentation on the Louisiana Watershed Initiative (LWI) and the goals of the Regional Capacity Building Grant Program (RCBG), roles and responsibilities, structure of the RSC• Present recommendations for final RSC appointment for discussion• Overview of 2020 timeline and key decision points• Presentation from OCD on conflict of interest and open meeting requirements• Presentation from LSU College of Coast and Environment overview of role• Q & A and discussion on the overall goals and strategy of the RSC
2:45pm – 2:55pm.	<p>3) Public Comment</p>
2:55pm – 3:00pm	<p>4) Meeting Closeout</p> <ul style="list-style-type: none">• Agree upon dates/times/location for 2020 meeting schedule



Agenda Item 1 **Introductions of Regional Steering Committee (RSC) Members**

PARISH	NAME	AFFILIATION
Ascension	Ron Savoy	Local Drainage
E. Baton Rouge	Tom Stephens	Local Engineer
E. Feliciana	?	
Iberville	John Clark	Environmental Manager
Livingston	Mark Harrell	Community Rep
St. Charles	Earl Matherne	Floodplain Manager
St. Helena	Major Coleman	Community Rep
St. James	Ryan Donadieu	Community Rep
St. John	Devin Foil	Natural Resources
St. Tammany	Ross Liner	Community Rep
Tangipahoa	Bridget Bailey	Community Devel. Director
Washington	Bobbi Jo Breeland	Floodplain Manager
W. Feliciana	Gary Mego	Floodplain Manager
Regional	Dietmar Rietschier	Local Drainage District
Regional	Karen Zito	Local HBA
Regional	Chuck Berger	Conservation/Environment
Regional	?	Conservation/Environment

Agenda Item 2: RSC Orientation

An overview presentation on the Louisiana Watershed Initiative (LWI)

Overview of program timeline and key decision points

Program (RCBG), roles and responsibilities, and draft work plan

Goals of the Regional Capacity Building Grant, role of CRPC and Watershed Coordinator

Broad overview of next phase – Watershed Coalition

LSU College of Coast and Environment overview of their role

Louisiana's Provisional Watershed Region 7



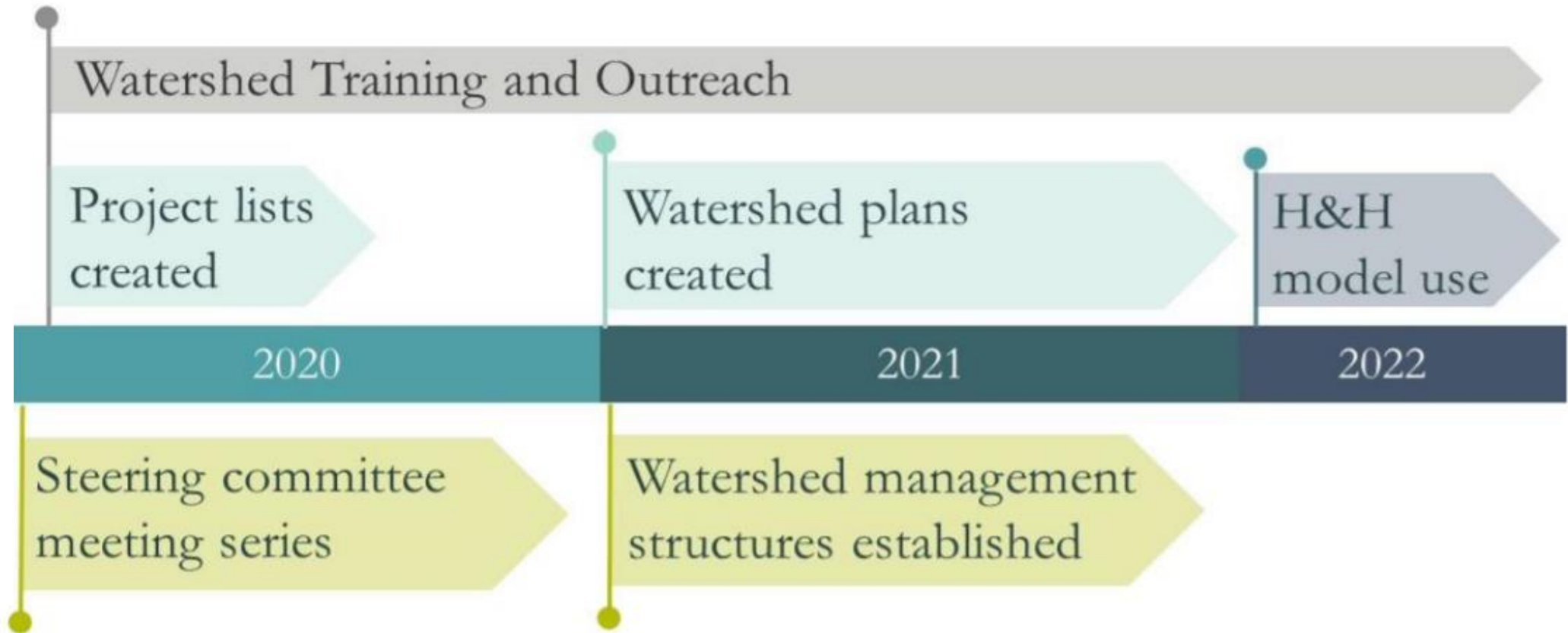
LWI RCBG Program Goals

PRIMARY: **Establish watershed coalitions**

- Form steering committees (*first year*)
- Choose management framework for coalition (*first year*)
- Establish coalitions (*second and third years*)
- Maintain long-term support for coalitions

SECONDARY: **Cultivate staff capacity** in the region to enhance the impact of outreach and floodplain management activities

RCBG Program Milestones



Regional Steering Committee

Primary Tasks



1. Adopt a work plan (June 2020)
2. Compile a prioritized project list (October 2020)
3. Submit Round 1 award recommendations to OCD (tent. October 2020)
4. Select a governance model for Regional Watershed Coalition & consider watershed boundaries (November 2020)



Key Dates & Deadlines

May 29, 2020 Hold the first meeting of the regional steering committee

Oct. 31, 2020 Produce preliminary regional watershed project inventory

Nov. 30, 2020: Determine Watershed Coalition Governance Structure

Apr. 30, 2022: Expend all funds provided by this program



Expectations for RSC Members

- Participate in and attend scheduled RSC meeting or send alternate
- Understand and communicate the challenges in their region and/or parish/jurisdiction
- **Represent values, contribute expertise and express short and long-terms concerns of stakeholder groups represented**



Regional Steering Committee Meetings

Will adhere to Louisiana Open Meetings requirements:

- Observable to the public
- Provide opportunity for public comments
- Opportunity to increase public's trust and awareness of the work of the RSC
- Importance of transparency and decision-tracking
- 24-hour advance notice of the meeting
- Allow for recording of the meeting by the audience
- Record minutes of the proceedings for public record



Draft Region 7 Work Plan

Key Activities (more to be added)	General Timeline (may change)
RSC Organization/Orientation	
Regional Steering Committee (RSC) Orientation	May 2020
RSC meeting procedures and bylaws	June 2020
RSC adoption of work plan, meeting calendar	June 2020
Development of Watershed Project Inventory	
Exercise on known risks and vulnerabilities	July 2020
Discuss regional priorities	Aug 2020
Develop Watershed Project Inventory list	Oct 2020
Round 1 Project Funding Recommendations	
Review and Finalize funding recommendations	Oct 2020 (subject to change)
Regional Watershed Coalition Development	
Webinar existing watershed management responsibilities	July/Aug 2020
Consider watershed collaboration models	Aug 2020
Determine watershed governance structure	Nov 2020
Disbanding of RSC	Feb/Mar 2021





Role of Capital Region Planning Commission

Fiscal Agent & Watershed Coordination

Principal Tasks:

- Steering Committee and Watershed Coalition Coordination
- Regional Capacity Analysis and Regulatory Review (with LSU, Environmental Regulation & Planning Lab)
- Coordination, Education and Outreach - CRS/NFIP, local meetings
- Development of Watershed Management Plans & Project List(s)



Expectations for Watershed Coordinators

- Ensure notice requirements are followed for RSC meetings
- Reserve venues and coordinate meetings for RSC members
- Document decisions of the RSC
- Provide ongoing resources and education for RSC members
- Coordinate with parish and municipal governments in the region



RCBG Year Two and Three Preview

- Coalition stand-up
- Coalition work plan
- Draft Regional Watershed Plan
- Begin engagement with models
- Long-term capacity check-ins



Potential Responsibilities of Watershed Coalitions

Funding
Planning
NFIP Coordination
Project Execution
Outreach and Engagement
Regulatory Authority
Analysis
Data Management
Monitoring and Evaluation
Technical Support/Capacity Building



Thomas Douthat, J.D., Ph.D.

- Lab Focus:

- Place-based systems' adaptation to social, economic, and environmental change through lenses of law, planning and policy
- Work spans both rural and urban areas
- Approach problems through background in environmental planning and governance, spatial analysis, and law
- Creating practical solutions for a more equitable and resilient society
- Involves adaptation in socio-environmental systems (e.g. coastal communities, and agriculture), linkages between environmental and economic systems, and sustainable transportation



LSU

College of the Coast & Environment

LSU Student Collaborators

- **Lindsey Lamana**

- Graduate student in the Department of Environmental Sciences at LSU and an intern for CRPC
- Developing a watershed plan evaluation framework for the LWI
- Background in environmental policy and management, coastal sciences, and environmental sciences
- Bachelor's of Science in Coastal and Environmental Sciences

- **Rukshaba Sherin**

- B. Arch, Degree candidate in LSU M.L.A. (22")

- **Victoria Nguyen**

- Degree candidate in CC&E B.S. program (22")



LSU

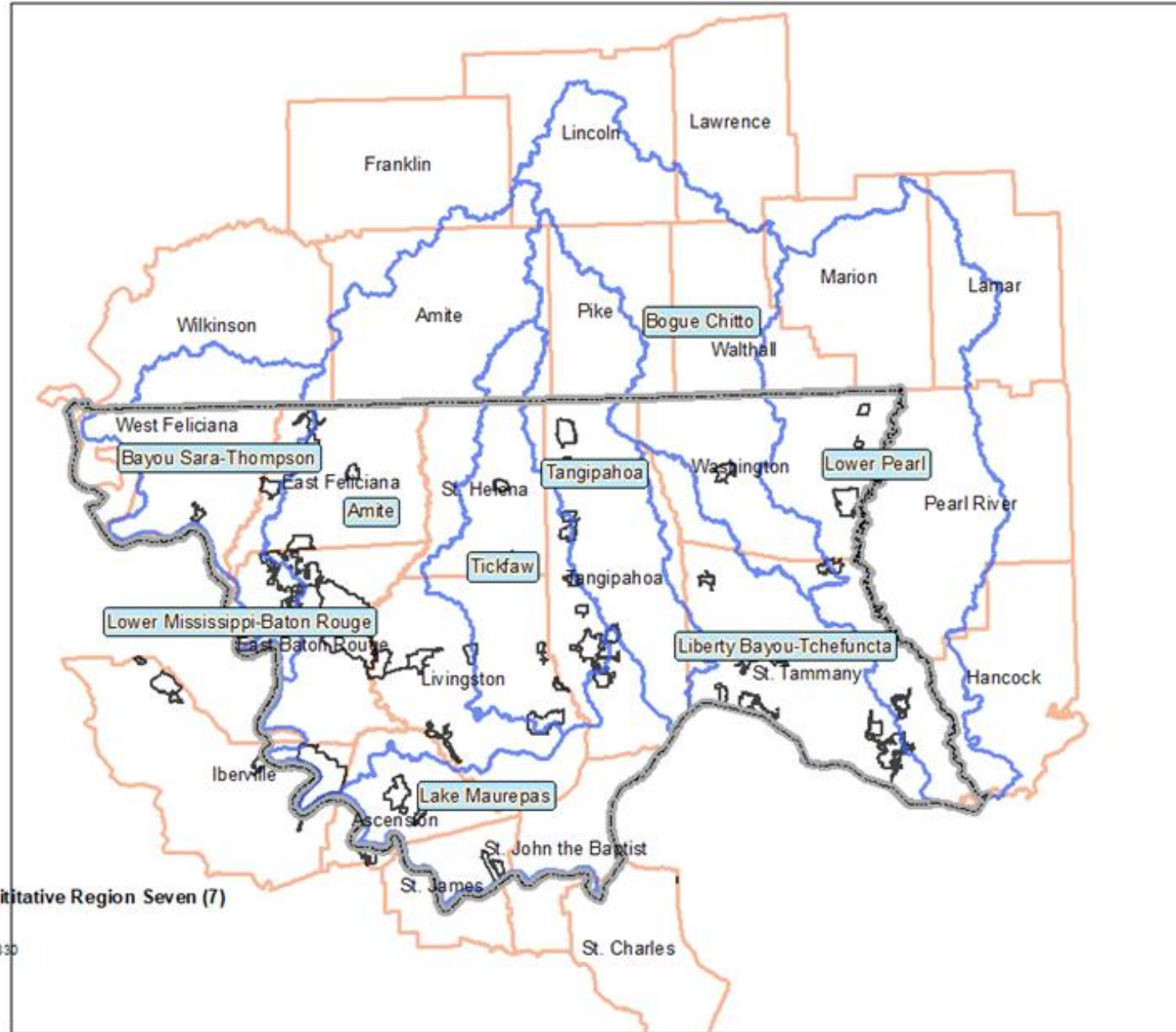
College of the Coast & Environment

LWI Region 7 Parishes & Watersheds

Water flows across municipal borders and what one jurisdiction does affects the entire watershed.

Louisiana Watershed Initiative Region Seven (7)

-  LWI Watershed_Regions_630
-  HUC 8 Boundaries
-  Incorporated Places
-  Parishes - Counties



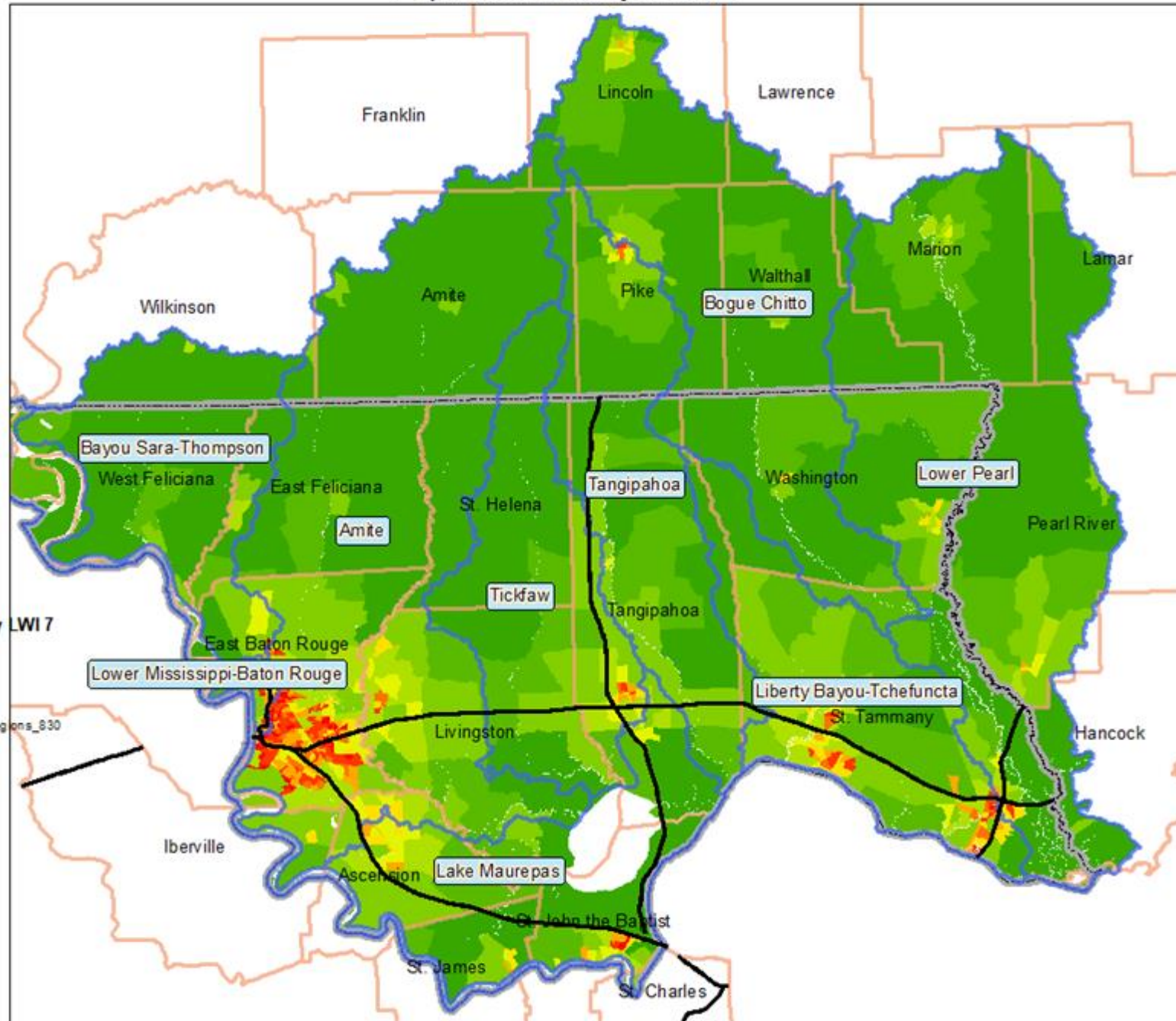
Regional Systems of Watershed Governance

- 9 hydrologic unit code (HUC) Level 8 Systems
 - Fragmented landscape of decision making
 - 2 States
 - 13 LWI 7 Parishes
 - 51 LWI 7 Municipalities
- Unifying Theme: High levels of flooding exposure and damage histories
- How do we best take into account?
 - Diverse growth and economic development visions
 - Current land use and planning practices
 - Need to minimize externalities

LSU

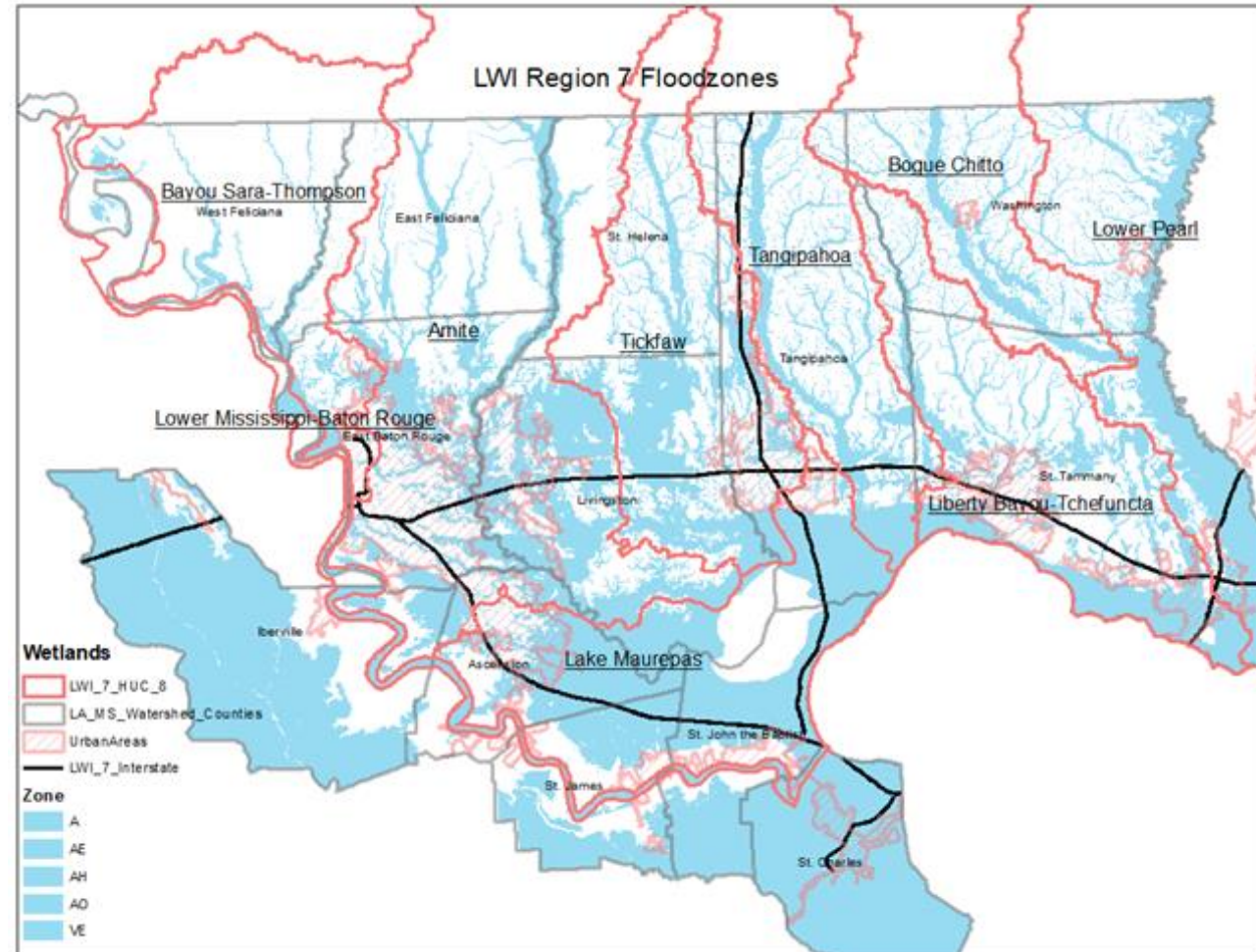
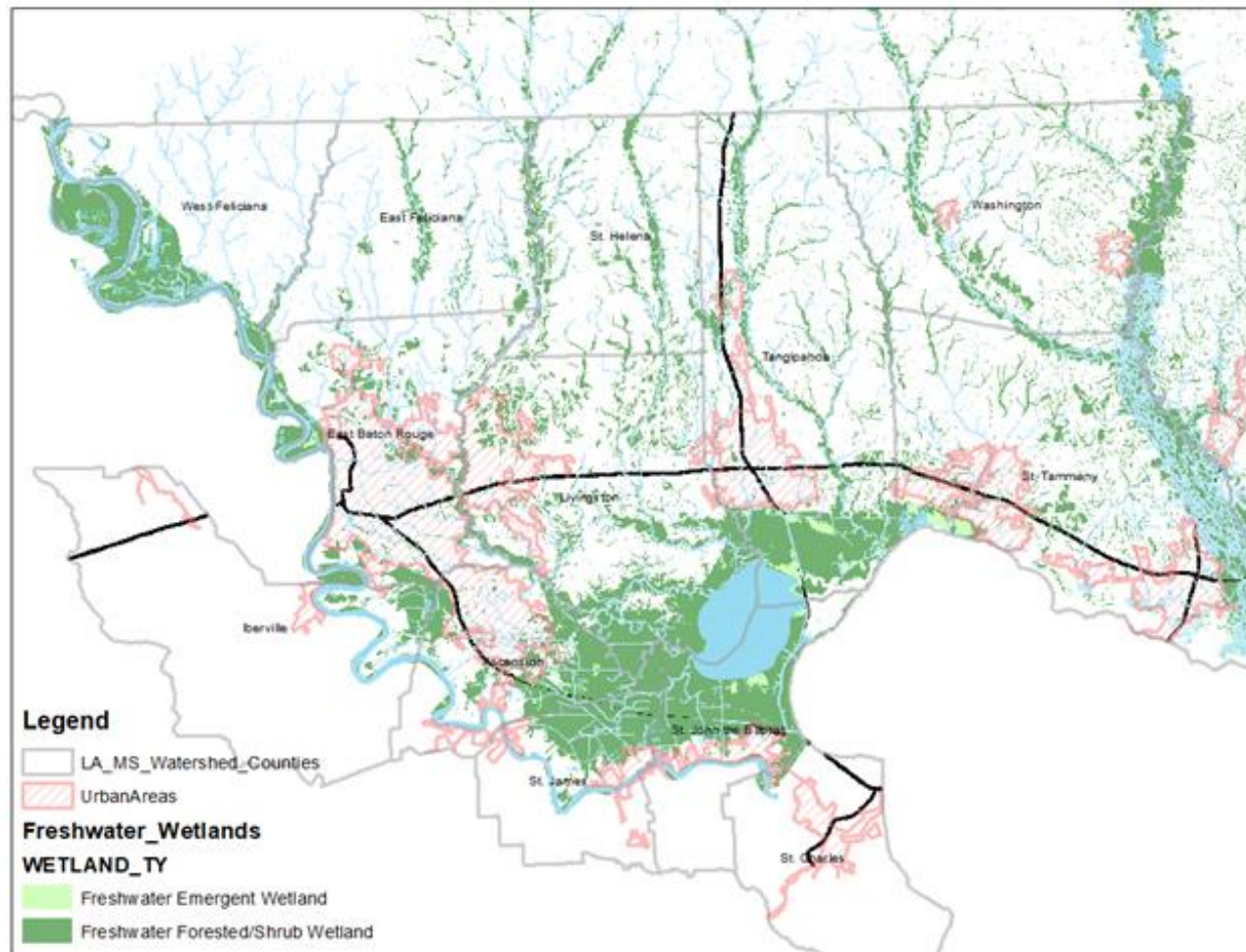
College of the Coast & Environment

Population Density in LWI 7



Population in Region 7 is Largely Concentrated Around Major Transportation Corridors

How Can We Better Govern Up-stream and Down-stream Linkages?



Support Activities for Louisiana Watershed Initiative Region 7

- What options are there for coalition structures, and what are the tradeoffs?
- What is the state of watershed governance in this region?
- What are the gaps in current collaboration and planning for flood mitigation and harm reduction in LWI Region 7's parishes and municipalities?
- What are the current practices around land development and subdivision regulation regarding flooding in the region?

LSU

College of the Coast & Environment

Initial Governance Analysis to Inform Steering Committee Regarding Watershed Coalition Structure

- Review best practices nationally for collaborative watershed management around hazards at the regional level
- Summarize potential models of coalition organization structure



LSU

College of the Coast & Environment

Analyze Current Watershed Governance in Region

- Help LWI 7 Better Understand Existing Regional Practices and Actors
 - Inventory and categorize existing watershed actors
 - Inventory and review planning documents
 - Analysis to understand how plans relate to one another, and who has been involved
 - Inventory and categorize current land use and sub-division practices
- Help LWI 7 Better Understand Existing and Future Coordination
 - Assess coordination between land use and storm water related infrastructure planning
 - Assess parish/municipal internal staffing and capacity for watershed related efforts
 - Survey local leaders regarding collaboration, as well as barriers and opportunities

LSU

College of the Coast & Environment

Agenda Item 2 (con't) RSC Membership

Open at large position nominees:

- Ronny Carter: Lake Pontchartrain Basin Foundation
- Elizabeth DeEtte Smythe: St. Tammany Parish engineer



PARISH	NAME	AFFILIATION
Ascension	Ron Savoy	Local Drainage
E. Baton Rouge	Tom Stephens	Local Engineer
E. Feliciana	?	
Iberville	John Clark	Environmental Manager
Livingston	Mark Harrell	Community Rep
St. Charles	Earl Matherne	Floodplain Manager
St. Helena	Major Coleman	Community Rep
St. James	Ryan Donadieu	Community Rep
St. John	Devin Foil	Natural Resources
St. Tammany	Ross Liner	Community Rep
Tangipahoa	Bridget Bailey	Community Devel. Director
Washington	Bobbi Jo Breeland	Floodplain Manager
W. Feliciana	Gary Mego	Floodplain Manager
Regional	Dietmar Rietschier	Local Drainage District
Regional	Karen Zito	Local HBA
Regional	Chuck Berger	Conservation/Environment
Regional	?	Conservation/Environment

AFFILIATIONS
Floodplain Manager
Drainage or Levee District
Engineer
Natural Resources Professional
Community Rep
Academic
Conservation or Ag Community
Planning or Development Dist.
Builder, Developer or HBA
Environmental Nonprofit
Chamber of Commerce
Real Estate, Insurance or Banking

Agenda Item 3: Public Comment

If members of the RSC or public would like to make a comment, please do so by unmuting your microphone or by use of the chat pod at this time. Thank you.



Agenda Item 4: Meeting Close Out

- Next Meeting Date – June (TBD)
- Location – Virtual?



Contact information

Rachelle Sanderson, Region 7 Watershed Coordinator
Rsanderson@crpcla.org

Drew Ratcliff, Regional Disaster Recovery Manager
DRatcliff@crpcla.org

Kim Marousek, AICP, Director of Planning
Kmarousek@crpcla.org



Capital Region Planning Commission

Local Governments Working Together Since 1967

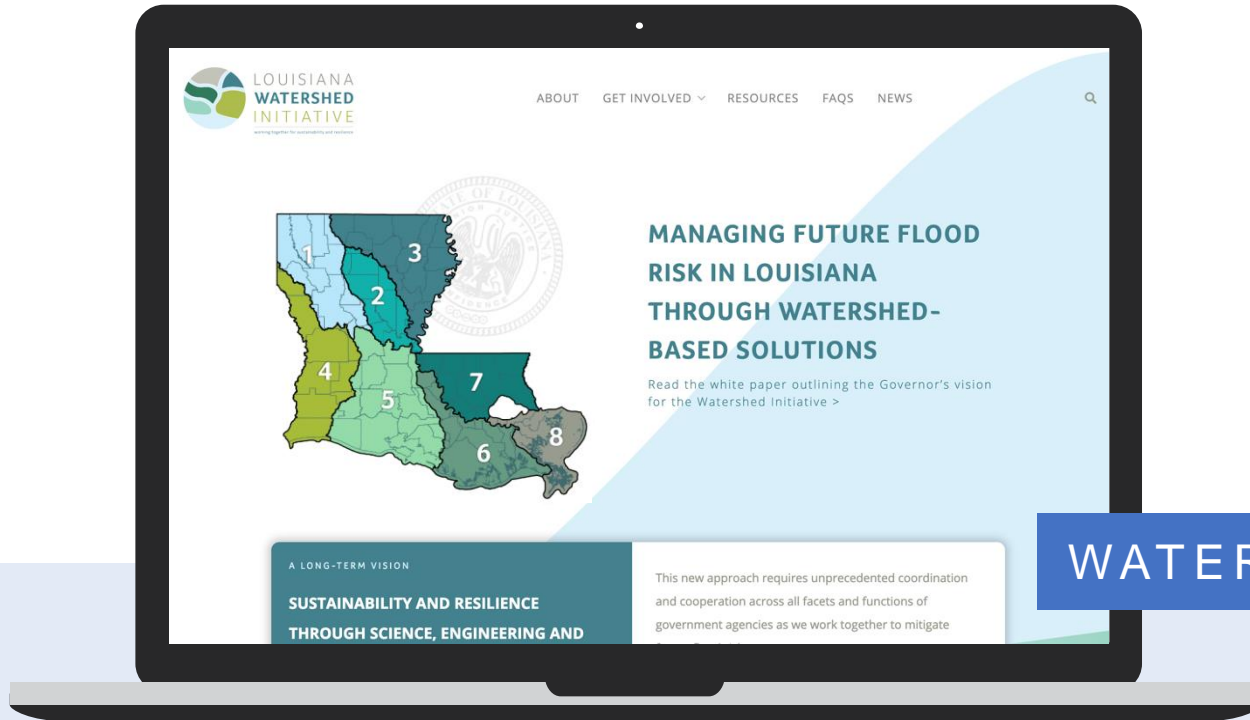


f @LAWATERSHEDINITIATIVE

t @LAWATERSHED

e WATERSHED@LA.GOV

THANK YOU



WATERSHED.LA.GOV

LWI Region 7

RSC Meeting #2

June 30, 2020 9:30 am to 11:30 am

Roll Call

32 participants

Regional Steering Committee Members

1. Ascension – Mike Enlow
2. EBR – Tom Stephens
3. E. Feliciana – James Stewart (not present)
4. Iberville – John Clark (not present)
5. Livingston – Mark Harrell (not present)
6. St. Charles – Earl Matherne
7. St. Helena – Major Coleman
8. St. James – Ryan Donadieu
9. St. John the Baptist – Devin Foil
10. St. Tammany – Ross Liner
11. Tangipahoa – Bridget Bailey
12. Washington – Bobbi Jo Breeland
 - a. Alternate present – Alex Sumrall
13. W. Feliciana – Gary Mego
14. Karen Zito
15. Chuck Berger
16. Ronny Carter
17. Dietmar Rietschier (not present)

Others in attendance

Donna O'Dell, DeEtte Smythe, Drew Ratcliff, Glenn Ledet, Heidi Stewart, Honora Buras, Risa Mueller, Rachelle Sanderson, Evelyn Campo, Tom Douthat, Ken (no last name), Leah Selcer,

Liz Harris, Megan Terrell, Rawley Webber, R Pausina, Ronny Carter, Sooraz Patro,
2253835203, 8507281810, Jamie, Lindsey & Kim/CRPC

Draft Bylaws

Part I: Background and Purpose

Background

1. “This Committee will dissolve late spring/early summer (previously Spring 2021)
 - a. Q: What is the annual workplan timeframe?
 - b. A: This could be more of a working document.
 - c. Recommend adopting a fluid workplan... or coalition annual review... – Bridget

Movement to make recommendations.

Purpose

No recommendations.

Motion to adopt Part I – Ross Liner (1st)

Motion passes

Part II: Bylaws

1. Open Meeting Laws

No recommendations.

2. Duties and Responsibilities

2. Q: If alternate is there would it constitute failure to attend three consecutive meetings?
 - a. A: If alternate is present, then it’s fine.
 - b. Recommendation: Add “or anyone designated”
 - c. Motion to adopt.

3. Composition of the RSC

3. Recommendation: Add “or anyone designated” – Ross
 - a. Motion to adopt – Major (1st) and Ross (2nd)

4. Organization and Structure

4. Recommendation: “Defined in section 7.” Previous section listed was incorrect.
5. Recommendation: Description on secretary duties- Bridget
 - a. Will write description and highlight in bylaws – Rachelle
 - b. Motion to adopt – Major (1st) and Ross (2nd)

5. Conflict of Interest

1. Q: Do RSC members have to take LA Code of Ethics online class?
 - a. A: Likely that you would.
 - b. Follow-Up between Rachelle and Evelyn

6. Procedural Rules

2. Recommendation: Recommend for 2/3 majority instead of 75% when minimum quorum is not present (less than 10 members) -Tom Stephens
 - a. Motion to adopt – Ryan (1st) and Ross (2nd)

7. Quorum

2/3 of quorum for voting decided

8. Approval and Amendment to Bylaws

No recommendations.

9. Dissolution

3. Recommendation: Change “**Spring 2021**” to Spring/Summer 2021 for now – Rachelle
 - a. Recommendation: “Other regions timeline is based on the signing of the contract with HUD” ... instead of setting particular dates, then it’s at least 6, 12, 18 month-based after the contract is signed (possibly region 6) - Earl Matherne
 - b. Recommendation: Add unless requested by committee after extended by OCD “unless required by some outside force”
 - c. Q: Is it OCD’s authority to accept or reject?
 - d. A: “Don’t see a reason why OCD wouldn’t be receptive to a timeline change ... want to be responsible for the needs of the region ... Goal isn’t to put anyone in a timeframe.”
 - e. Motion to adopt – Ross (1st) and Major (2nd)

10. Post-written Certification Advising that RSC is Unable to Meet In-Person

No recommendations.

Motion to adopt Part II of the bylaws – Major (1st) and Bobbi Jo (2nd)

Motion passes, bylaws are fully adopted with the changes mentioned previously.

Draft Workplan

Evelyn: Action-plan itself was approved in February. After, HUD has to give you a formal grant agreement. Two-step process we are in between right now.

Rachelle: Work-plan will be updated over time when things change.

2020

Next meeting - July 28th

Rachelle + Arcadis working on flood risk and vulnerabilities workshop

August – September

Intro to project inventory tool

Vision, values, and priorities

– November

Governance model recommendations and input for state framework (due Nov. 30, 2020)

– December

Project inventory (due Oct. 31, 2020) and Round 1 project recommendation (due Fall/Winter 2020)

Motion to adopt workplan 2020 – Ross (1st) and Earl (2nd)

Motion passes

2021

January – February

Policy alignment analysis, capacity building, prep for implementation of gov. model

March

Legislative Session

April – May

RSC dissolution

Motion to adopt workplan 2021– Major (1st) and Ross (2nd)

Motion passes, workplan is fully adopted

Evelyn: “Should be conscious of throughout these months, the one resource that will make this rule smoothly is our ability to communicate with each other. Not just those on call, keep the stakeholders in your community aware and involved in what you’re doing and considering... “

4. Q: Will this committee focus on the capacity building aspect of the parishes?
 - a. A: Still gathering information for some of the needs ... capacity goes beyond that... would like to hear ideas.
 - b. Referenced Clean Water Act... and compliance to regulations.
 - c. Recommends education/learning opportunities.

Chair and Vice-Chair Elections (Chair – Ross Liner, Vice-chair – Chuck Berger)

Nominations

Chair

1. Ross Liner – accepts
2. Motion to close nominations
3. Ross Liner is the Chair

Vice-Chair

4. Chuck Berger – accepts
5. Major Coleman – accepts

Voting for Vice-Chair

Results – 10 votes for Chuck Berger

Chuck Berger is the Vice-Chair

Public Comment

1. Chuck Berger: Mentions quality of life, would like to see no adverse impacts of projects.
2. Liz Harris (community volunteer): “Would love to see group recommend management technologies that also deal with floatables aka trash. Florida has over 300 cities doing this now and I [think] Louisiana can do this too.”
3. Honora Buras: “I would like to see incorporation of strategic land conservation incorporated into watershed management in all parishes.”
4. Chuck: Regional basis v. watershed

Motion to Adjourn (11:21 AM)

Motion passes

July 2020 Meeting

1. Rachelle: Will send out date/times to decide for July meeting.
2. Recommendation: Morning meeting at same time slot. – Chuck

LWI Region 7

Regional Steering Committee (RSC) Meeting

JUNE 30, 2020

Meeting ID: 869 1097 0053

Password:195512

Dial by your location:

+13017158592,,86910970053#,,1#,195512# US (Germantown)

+13126266799,,86910970053#,,1#,195512# US (Chicago)



LOUISIANA
WATERSHED
INITIATIVE

working together for sustainability and resilience

Regional Steering Committee Meetings

Will adhere to Louisiana Open Meetings requirements:

- Observable to the public
- Provide opportunity for public comments
- Opportunity to increase public's trust and awareness of the work of the RSC
- Importance of transparency and decision-tracking
- 24-hour advance notice of the meeting
- Allow for recording of the meeting by the audience
- Record minutes of the proceedings for public record

Roll Call and Notes

Roll Call: Please let us know if you are an alternate member

This is a public meeting:

- The meeting is being recorded and will be posted for public viewing
 - All comments made in the “chat pod” are written public comments
 - Comments from the steering committee can be made throughout the presentations
 - There is a specific time for public comments at the end of the meeting
-
- ❖ Please use your video camera during the meeting if possible
 - ❖ If anyone is having technical difficulties, please place a message in the chat pod.

Recognizing that...

- We're meeting during a global pandemic and global civil unrest during hurricane season in the Gulf.

- Thank you for being here!

Objectives

- Review and adopt bylaws
- Review and adopt workplan
- Elect Chair and Vice-Chair

AGENDA

TIME	ITEM
9:30 – 9:55 a.m.	1) Introductions and meeting logistics
9:55 – 10:25 a.m.	2) Review and adoption of bylaws
10:25 – 10:55 a.m.	3) Review and adoption of workplan
10:55 – 11:10 a.m.	4) Elect Chair and Vice-Chair
11:10 – 11:20 a.m.	5) Public comment
11:20 – 11:30 a.m.	6) Closeout



Introductions

NAME	AFFILIATION
Mike Enlow	Ascension Parish
Tom Stephens	East Baton Rouge Parish
James Stewart	East Feliciana
John Clark	Iberville Parish
Mark Harrell	Livingston Parish
Earl Matherne	St. Charles Parish
Major Coleman	St. Helena Parish
Ryan Donadieu	St. James Parish
Devin Foil	St. John the Baptist Parish
Ross Liner	St. Tammany Parish
Bridget Bailey	Tangipahoa Parish
Bobbi Jo Breeland	Washington Parish
Gary Mego	West Feliciana Parish
Dietmar Rietschier	Amite River Basin Commission
Karen Zito	Home Builders Association of Greater Baton Rouge
Chuck Berger	Department of Environmental Quality
Ronny Carter	Lake Pontchartrain Basin Foundation

What RSC Members Are Saying

1. Shared **challenges** means that there are also shared **opportunities**
2. **Improving quality of life** is important
3. **Tension** exists and we must acknowledge that it is both historical and current
4. This is, for many folks, the **first opportunity to collaborate**
5. This (watershed) work is **necessary** and it intersects with all facets of our lives
6. People are **smart and resourceful** and have witnessed **change**
7. Y'all are busy and **increasing capacity** is necessary

Quick Poll

- Risa will pull up a quick poll and we will guide y'all through the questions
- You'll see a window open on your device and you'll click which response(s) apply to you

Draft Bylaws

- Two Parts, with subsections
 1. Part One: Background and Purpose
 2. Part Two: Bylaws

- Recommend that we adopt by parts, so move to adopt part one, then part two.
Please note adoption may be contingent on updates being made



Draft Bylaws

- Part One: Background and Purpose
- Move to adopt



Draft Bylaws

- Part Two: Bylaws
- Move to adopt



Draft Workplan

This is too tiny to read, so let's break it down.

		May 21st	May 21st	June 30th	July 28th	August	September	October	November	December
2020	RSC Organizational Structure		Member orientation	Organizational structure: Adoption of bylaws and workplan		Vision, values, and priorities for Region 7				
	Governance & Coalition Development					Research, discuss, and design regional governance model recommendation and input for state framework (DUE NOVEMBER 30, 2020)				
	Projects				Risks, vulnerabilities, priorities, solutions workshop + Intro to project inventory tool	Research and discussion on project inventory (DUE OCTOBER 31, 2020) and discussion on Round 1 project recommendation (DUE FALL/WINTER 2020)				
		January	February	March	April	May				
2021	RSC Organizational Structure					RSC celebration & dissolution				
	Governance & Coalition Development	Policy alignment analysis, capacity building, prep for implementation of governance model			LEGISLATIVE SESSION					
	Projects									

REALITIES OF THIS TIMELINE:

1. Round 1 project recommendations **cannot** move forward until the action plan is approved by HUD
2. Deadlines may be "moveable"
3. This is a "living" document and should be updated regularly



Draft Workplan Key Dates

Oct. 31, 2020 Produce preliminary regional watershed project inventory

Nov. 30, 2020: Determine Watershed Coalition Governance Structure

Fall/Winter Recommendation for round
NOT OCT. 31 1 projects

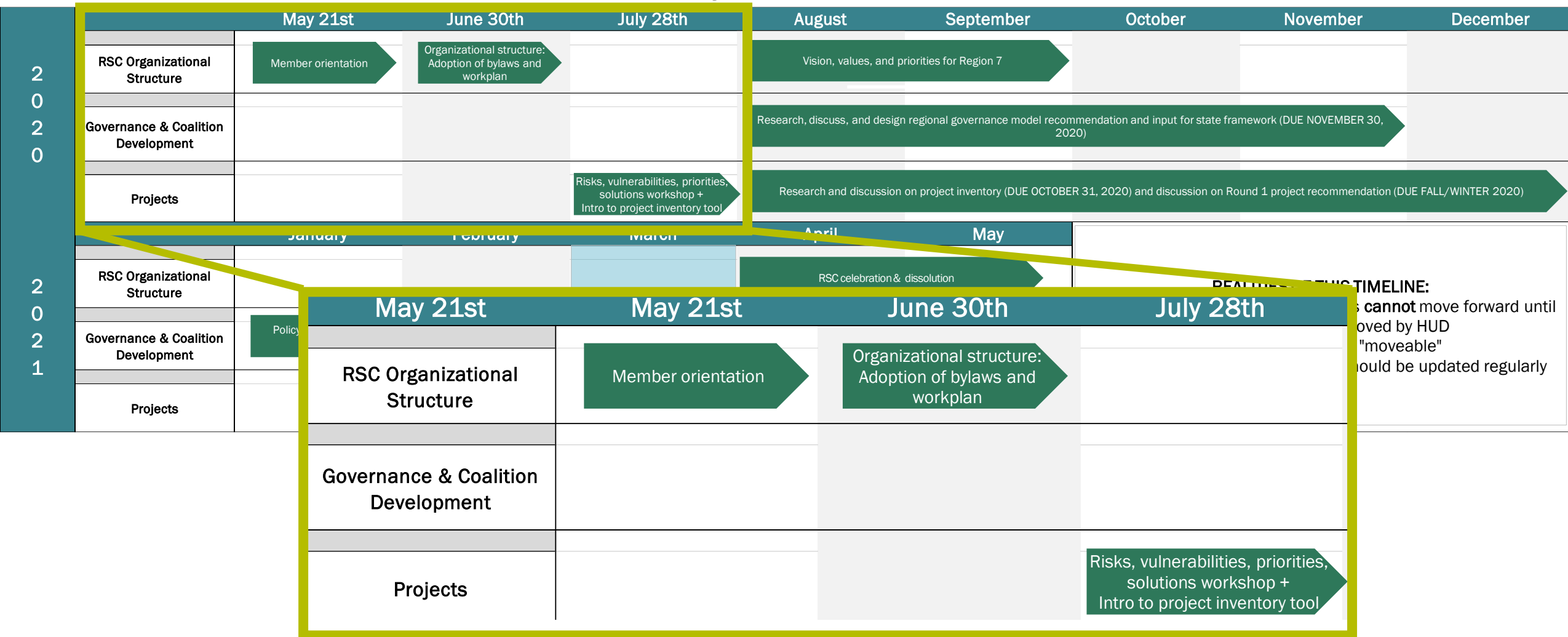


Realities of the timeline

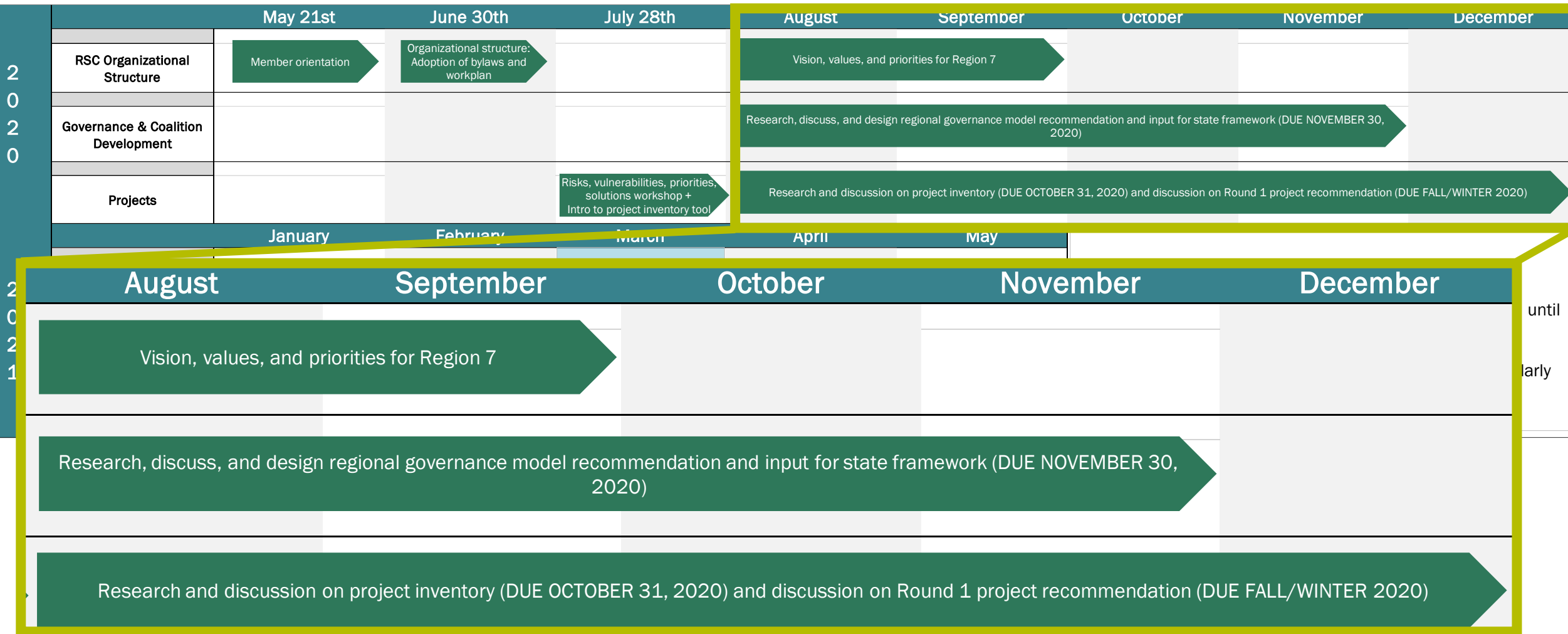
- 1. Round 1 project recommendations cannot move forward until there is a formal grant agreement established with HUD**
- 2. Deadlines may be "moveable"**
- 3. This is a "living" document and should be updated regularly**



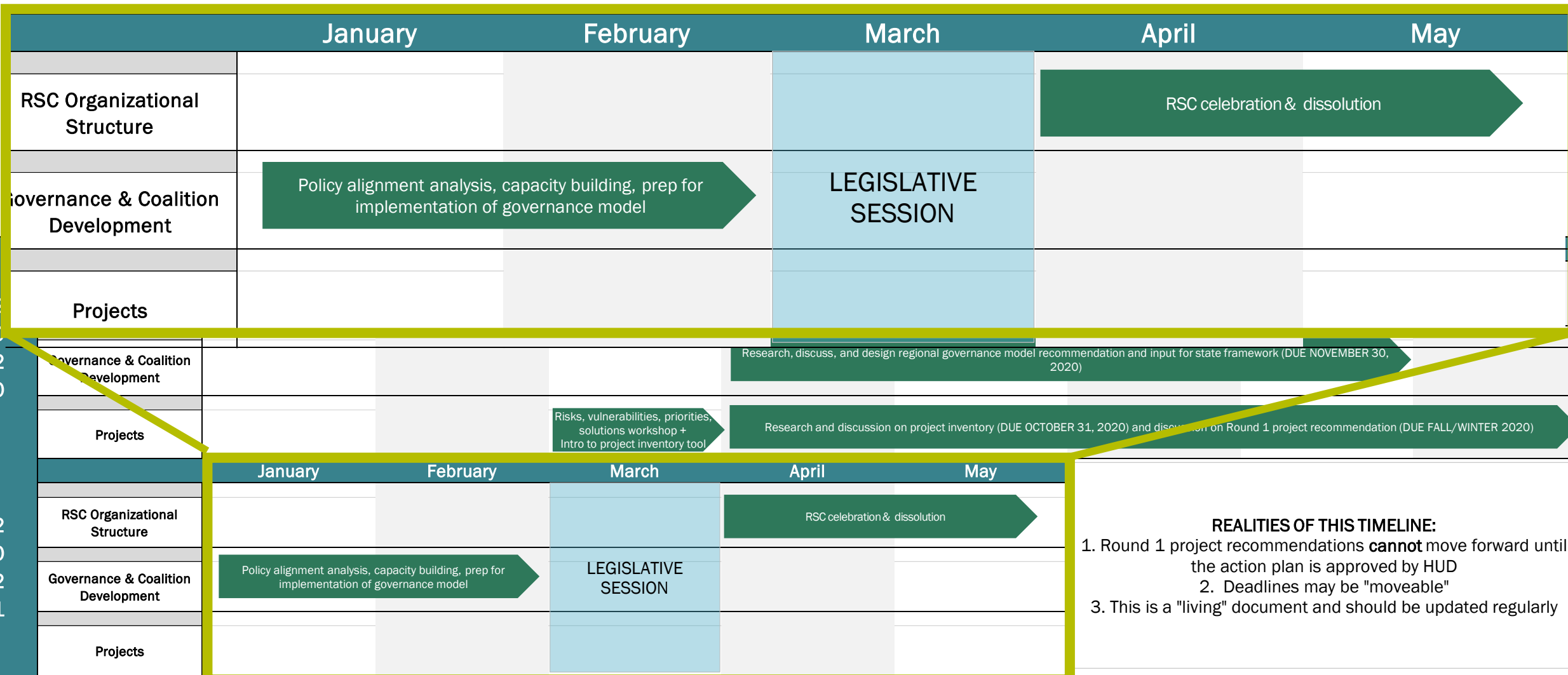
Draft Workplan – May



Draft Workplan – Aug. to Dec. 2020



Draft Workplan - 2021



Draft Workplan – Move to Adopt

		May 21st	June 30th	July 28th	August	September	October	November	December
2020	RSC Organizational Structure	Member orientation	Organizational structure: Adoption of bylaws and workplan		Vision, values, and priorities for Region 7				
	Governance & Coalition Development				Research, discuss, and design regional governance model recommendation and input for state framework (DUE NOVEMBER 30, 2020)				
	Projects			Risks, vulnerabilities, priorities, solutions workshop + Intro to project inventory tool	Research and discussion on project inventory (DUE OCTOBER 31, 2020) and discussion on Round 1 project recommendation (DUE FALL/WINTER 2020)				
		January	February	March	April	May	<p>REALITIES OF THIS TIMELINE:</p> <ol style="list-style-type: none"> 1. Round 1 project recommendations cannot move forward until the action plan is approved by HUD 2. Deadlines may be "moveable" 3. This is a "living" document and should be updated regularly 		
2021	RSC Organizational Structure				RSC celebration & dissolution				
	Governance & Coalition Development	Policy alignment analysis, capacity building, prep for implementation of governance model		LEGISLATIVE SESSION					
	Projects								



Chair and Vice-Chair Elections

Roles and Responsibilities

- **Chair:** serve as the presiding officer at each meeting
 - Will be aware of meeting agendas ahead of time and will facilitate RSC meetings, with support.
- **Vice-Chair:** serves the role of chair if the Chair is absent
- Elected by a simple majority vote at a regularly scheduled meeting of the Committee
- Are both voting members on all matters that come before the Committee.



Chair and Vice-Chair Elections

NAME	AFFILIATION
Mike Enlow	Ascension Parish
Tom Stephens	East Baton Rouge Parish
James Stewart	East Feliciana
John Clark	Iberville Parish
Mark Harrell	Livingston Parish
Earl Matherne	St. Charles Parish
Major Coleman	St. Helena Parish
Ryan Donadieu	St. James Parish
Devin Foil	St. John the Baptist Parish
Ross Liner	St. Tammany Parish
Bridget Bailey	Tangipahoa Parish
Bobbi Jo Breeland	Washington Parish
Gary Mego	West Feliciana Parish
Dietmar Rietschier	Amite River Basin Commission
Karen Zito	Home Builders Association of Greater Baton Rouge
Chuck Berger	Department of Environmental Quality
Ronny Carter	Lake Pontchartrain Basin Foundation



Public Comment

If members of the RSC or public would like to make a comment, please do so by unmuting your microphone or by use of the chat pod at this time. Thank you.



Closeout

- Adoption of May meeting minutes
- Schedule August meeting date
- Location – Virtual?
- Action items



Contact information

Rachelle Sanderson, Region 7 Watershed Coordinator
Rsanderson@crpcla.org

Drew Ratcliff, Regional Disaster Recovery Manager
DRatcliff@crpcla.org

Kim Marousek, AICP, Director of Planning
Kmarousek@crpcla.org



Capital Region Planning Commission

Local Governments Working Together Since 1967

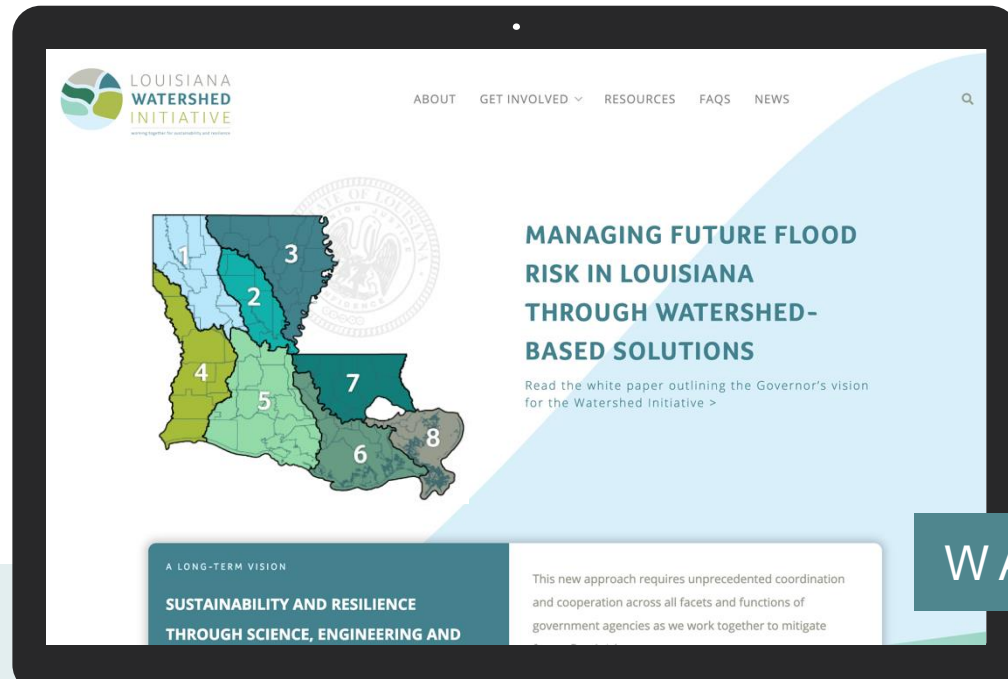


 @LAWATERSHEDINITIATIVE

 @LAWATERSHED

 WATERSHED@LA.GOV

THANK YOU



WATERSHED.LA.GOV

Region 7 Regional Steering Committee Work Plan Adopted June 30, 2020

		May 21st	June 30th	July 28th	August	September	October	November	December
2020	RSC Organizational Structure	Member orientation	Organizational structure: Adoption of bylaws and workplan		Vision, values, and priorities for Region 7				
	Governance & Coalition Development				Research, discuss, and design regional governance model recommendation and input for state framework (DUE NOVEMBER 30, 2020)				
	Projects			Risks, vulnerabilities, priorities, solutions workshop + Intro to project inventory tool	Research and discussion on project inventory (DUE OCTOBER 31, 2020) and discussion on Round 1 project recommendation (DUE FALL/WINTER 2020)				
		January	February	March	April	May	<p>REALITIES OF THIS TIMELINE:</p> <ol style="list-style-type: none"> 1. Round 1 project recommendations cannot move forward until a grant agreement with HUD is signed 2. Deadlines may be "moveable" 3. This is a "living" document and should be updated regularly 		
2021	RSC Organizational Structure				RSC celebration & dissolution				
	Governance & Coalition Development	Policy alignment analysis, capacity building, prep for implementation of governance model		LEGISLATIVE SESSION					
	Projects								

Deliverable Name	Responsible Organization(s)	Anticipated Timeline <i>*may change*</i>	Relationship to workplan
Risk and vulnerabilities presentation	CSRS Team & OCD	July 2020	Used to set the tone for shared knowledge, challenges, and opportunities related to flooding across Region 7
Flood risk, land use analysis exercise	CSRS Team & OCD	August 2020	Related to governance models : Used to guide conversations on existing challenges, why they exist, and what questions may be critical to developing solutions
Governance gap analysis exercise and briefing book	CSRS Team & OCD	September 2020	Related to governance models : Support conversations on existing entities, their authorities, with an eye towards the future
Governance overview	LSU	Fall 2020	Related to governance models : Support conversations on existing structures, etc.
Regional land development practices inventory overview	LSU	Fall 2020	Related to governance models: Broad overview of land development practice inventory, what it is, etc.