

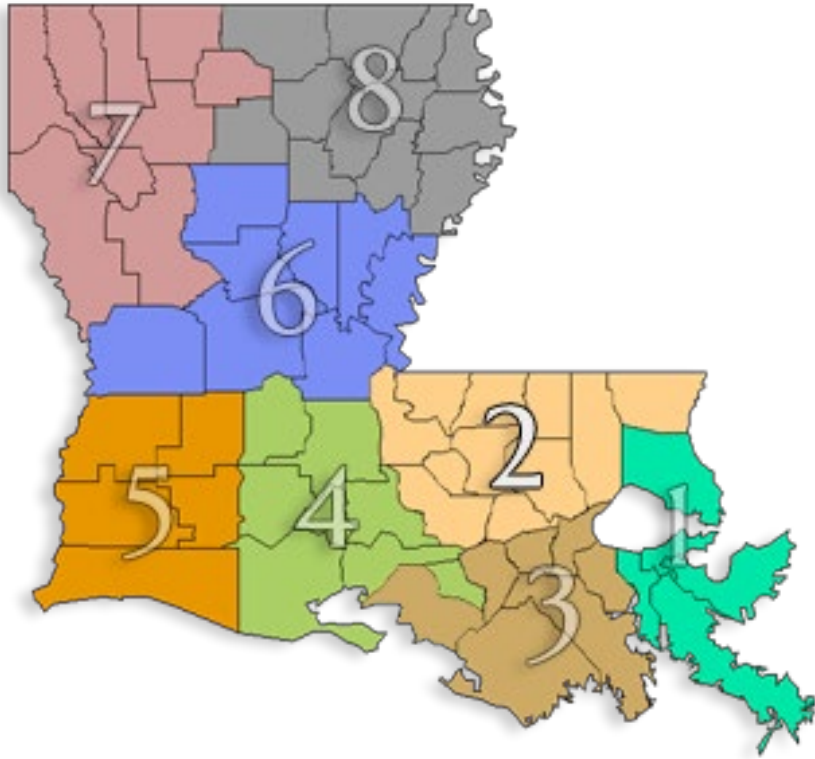
WELCOME AND INTRODUCTIONS

Monique Boulet

Acadiana Planning Commission &
Broadband for Everyone (BEL) Commission

Louisiana Office of Broadband Development & Connectivity
LA Planning & Development Districts
July 20, 2021

LA Planning and Development Districts



#	REGIONAL PLANNING DISTRICT	CONTACT
1	Regional Planning Commission (RPC)	Maggie Woodruff mwoodruff@norpc.org
2	Capital Region Planning Commission (CRPC)	Kim Marousek kmarousek@crpcla.org Mia Ruffin mruffin@crpcla.org
3	South Central Planning & Development Commission (SCPDC)	Pat Gordon pat@scpdc.org
4	Acadiana Planning Commission (APC)	Rachel Godeaux rgodeaux@planacadiana.org Chad LaComb clacomb@planacadiana.org
5	Imperial Calcasieu Regional Planning and Development Commission (IMCAL)	Mike Hollier mike@imcal.la
6	Kisatchie-Delta Regional Planning and Development District (KDRP)	Heather Urena heather@kdelta.org
7	Coordinating & Development Corporation (CDC)	Jack "Bump" Skaggs jskaggs@cdconline.org
8	North Delta Regional Planning & Development District (NRDP)	Doug Mitchell doug@northdelta.org

Delta Regional Authority Speed Test



CONTACT: Leslie Durham, Governor's Designee to the Delta Regional Authority

Through an innovative online crowd-sourcing platform, DRA has launched this year-long effort to gauge broadband accessibility throughout its eight-state region

10% of the population is considered a representative sample and can be used in speed validation to inform future funding allocations.

SPEED TEST LINK:

<https://dra.gov/research/broadband-mapping/#speedtest>

SPEED TEST RESULTS:

<http://expressoptimizer.net/projects/DRA/speedtestmap.html>

EDA Regional Broadband Planning Effort

Outreach

Educate community leaders and stakeholders on Broadband 101

Mapping

Coordinate a robust statewide mapping effort to identify BB service levels and inform decision-making

Deployment

Identify regional deployment priorities and offer technical assistance on deployment needs

Veneeth Iyengar

Executive Director for
Broadband Development and Connectivity for
the State of Louisiana

Louisiana Office of Broadband Development & Connectivity
LA Planning & Development Districts

LOUISIANA BROADBAND

Infrastructure, Affordability,
& Digital Literacy

Louisiana Office of Broadband Development & Connectivity
LA Planning & Development Districts

Infrastructure, Affordability, & Digital Literacy are Barriers to Access



*Office estimate based on a 2018 USDOE report which used a 2012 national digital assessment survey (sample)

Vision for Louisiana | Why It is Important

2029

Every Louisiana resident will have high-speed broadband (fiber or other)

4x

Economic Development Multiplier for every \$1 invested in broadband (Purdue Research)

>7,000

Speed Tests Completed
Redefining Speed

80

Different federal sources of money focused on accessibility and affordability

~\$1B

Over 8 years, potentially, from proposed infrastructure plan

Louisiana Broadband Tactical Solutions

Infrastructure

Solutions

1. FCC Rural Digital Opportunity Fund
2. House Bill 648 (Act 477)
3. American Rescue Plan

Impacts

1. ~ \$560 MM
2. ~ 300k Households
3. ~ 4-6 Years

Louisiana Broadband Tactical Solutions

Affordability

**FCC Emergency
Broadband Benefit
Program**

(May 12)

107,857 residents have received relief so far

**FCC Emergency
Connectivity Fund**

(July 1)

American Rescue Plan
(ongoing)

Louisiana Broadband Tactical Solutions

Digital Literacy

**Public-Private
Partnerships**

**Investment & Scaling
of Existing State
Programs**
(Regents)

**Local Programs
Funded through
American Rescue
Plan**
(ongoing)



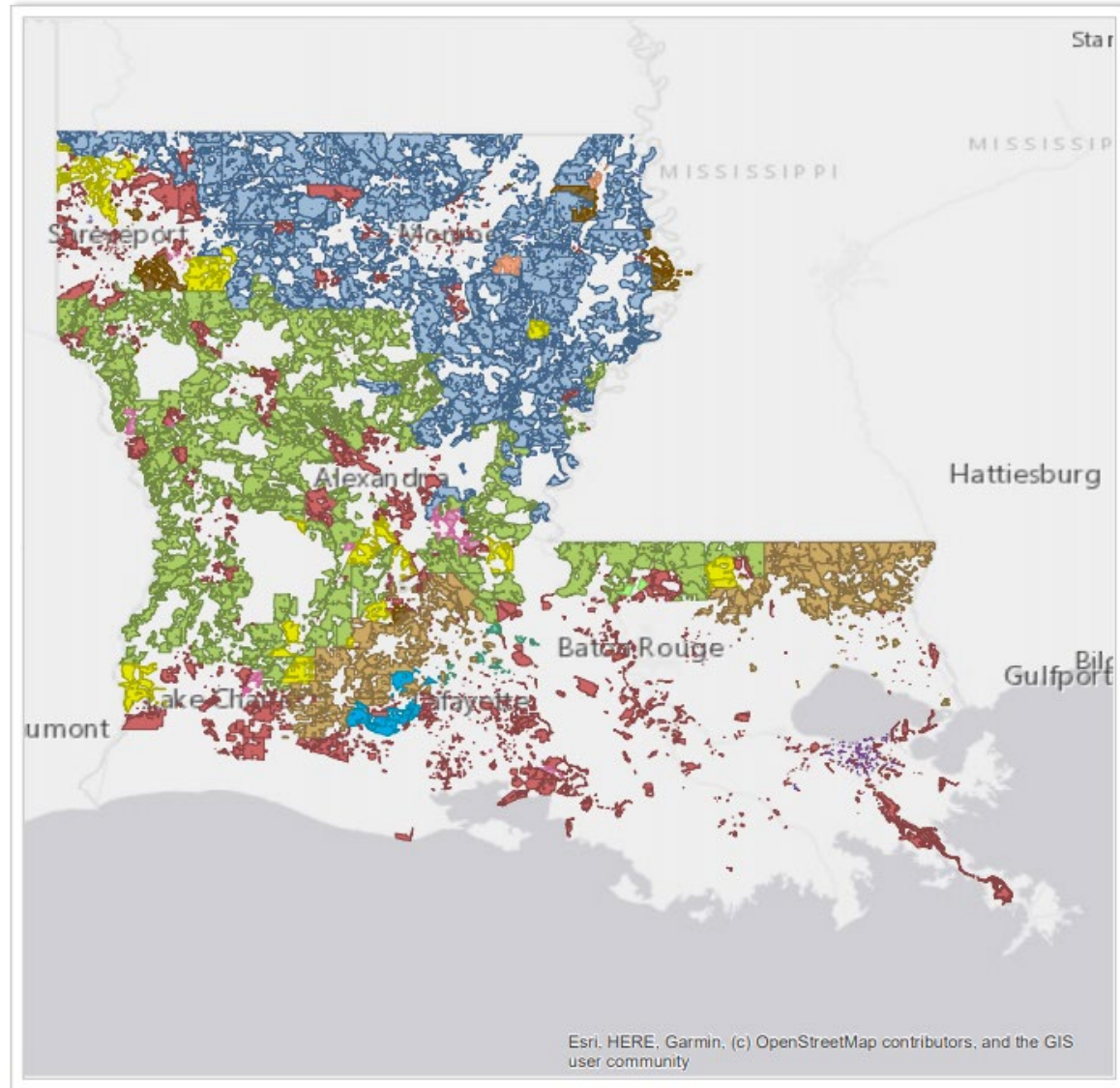
**First Investment - RDOP: \$342 million
Invested (over six years) to Impact 175,000
Residents**

Rural Digital Opportunity Fund - Phase I Funding

LOUISIANA

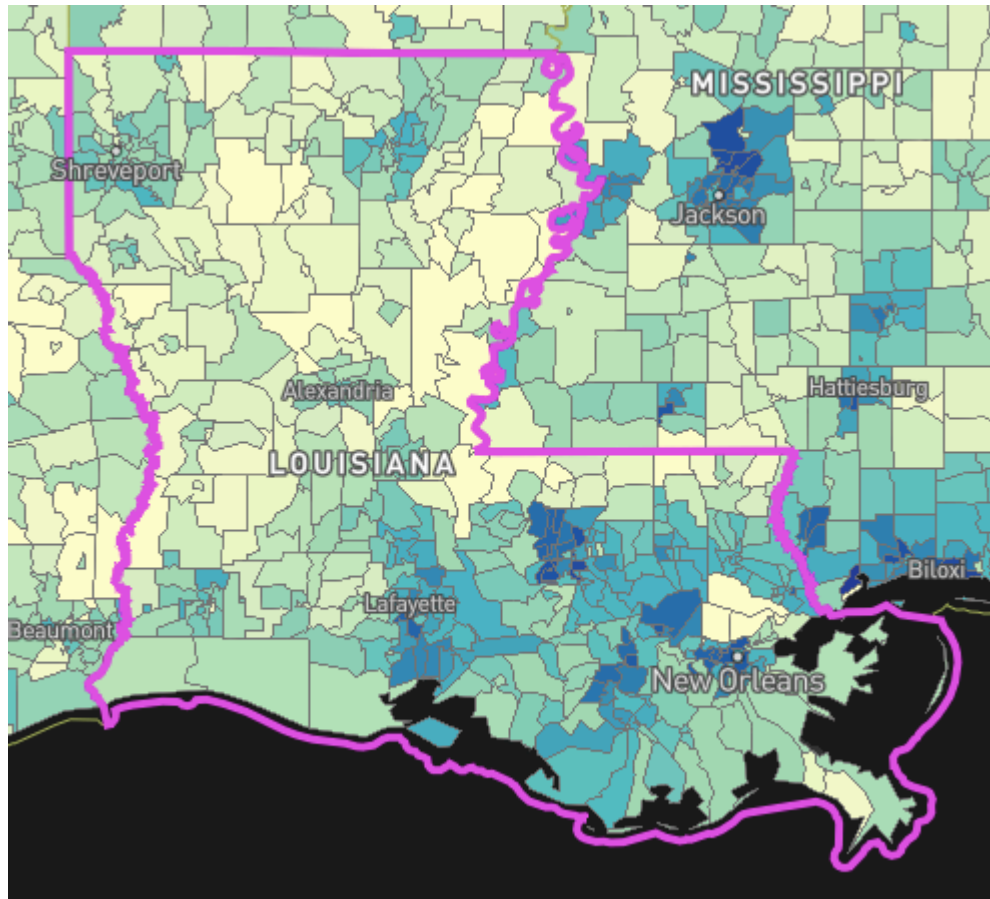
**Broadband
Locations:
175,692**

- Space Exploration Technologies Corp.
- Rural Electric Cooperative Consortium
- Segnem Egere Consortium
- Cox Communications, Inc.
- CCO Holdings, LLC
- CenturyLink, Inc.
- Altice USA, Inc.
- AMG Technology Investment Group LLC
- Allen's T.V. Cable Service, Inc.
- Wisper-CABO 904 Consortium
- NexTier Consortium
- NRTC Phase I RDOF Consortium
- Commnet Wireless, LLC



Understanding the Access Issue – Louisiana

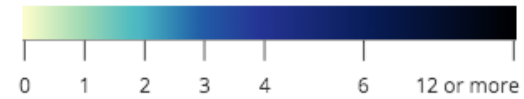
FCC Broadband Access



Louisiana



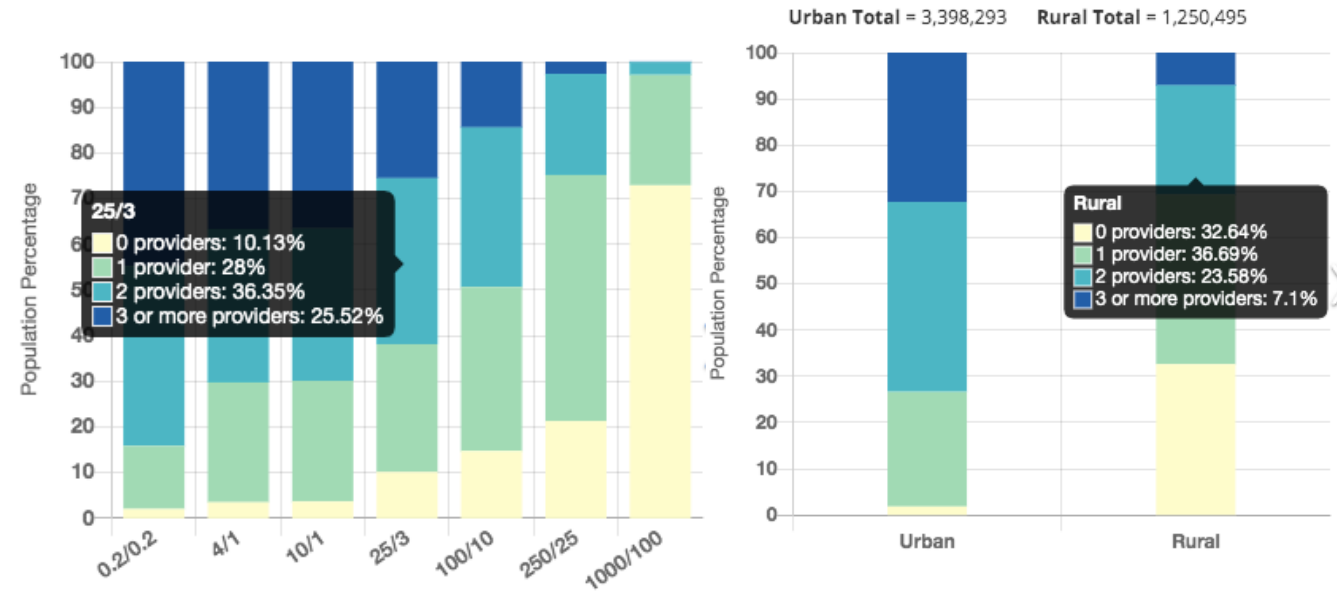
Number of Fixed Residential Broadband Providers



Broadband

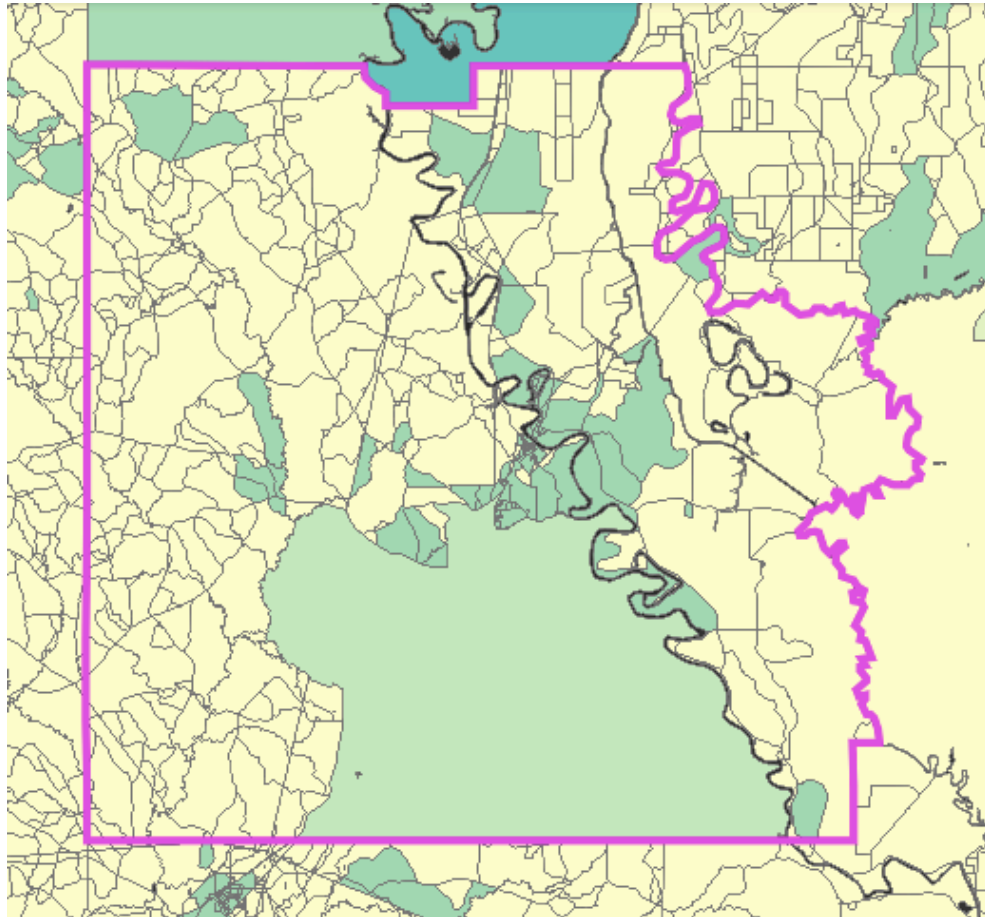


Technology ADSL, Cable, Fiber, Fixed Wireless
 Speed \geq 25/3 Mbps
 Date June 2020 (latest public release)



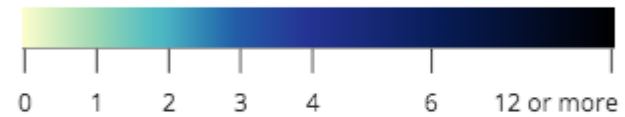
Understanding the Access Issue – Caldwell Parish

FCC Broadband Access



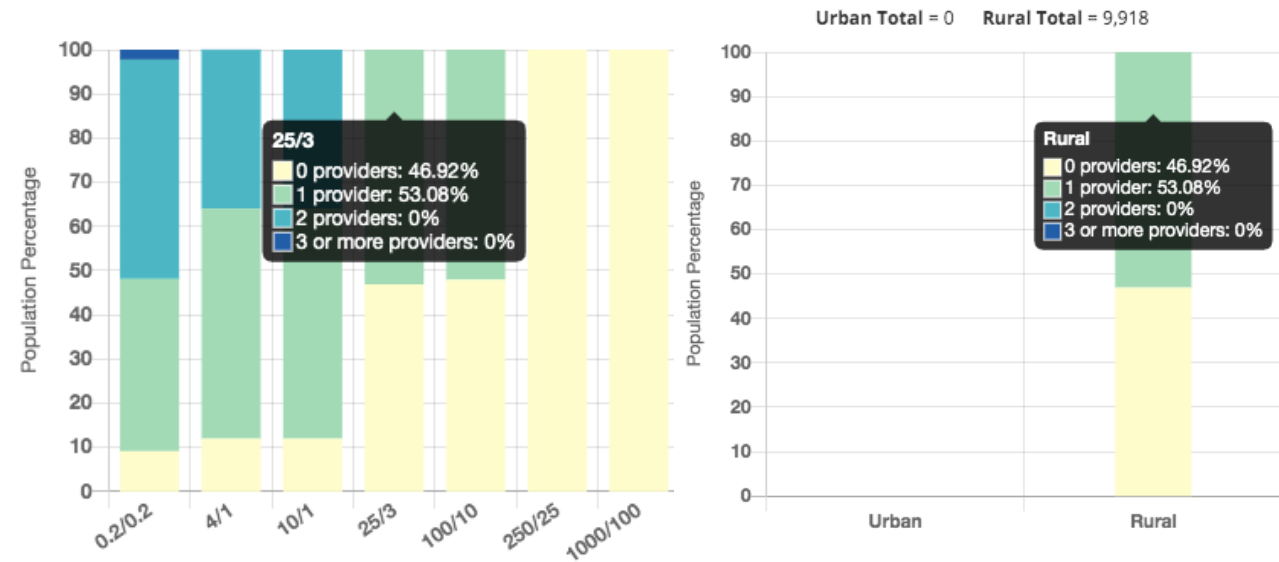
Caldwell Parish, LA

Number of Fixed Residential Broadband Providers



Broadband

Technology ADSL, Cable, Fiber, Fixed Wireless
Speed \geq 25/3 Mbps
Date June 2020 (latest public release)



Understanding the Access Issue – Caldwell Parish

Rural Digital Opportunity Fund

RDOF Results

2

Providers

SpaceX
Rural Electric Cooperative

2,731

RDOF
Households



Understanding the Affordability Issue – Caldwell Parish

- **Economics**
 - Median Household Income - \$37,691
 - Percentage of Caldwell Parish Residents in Poverty – 19.5%
- **Average Cost of Internet Services Per Month - \$50 to \$75**
- **Statewide, as of July 20, FCC EBB Program has Benefited 107,857 Residents**
- **EBB Emergency Connectivity Fund**
- **Local Parishes, Cities, & Towns Can Spend ARP Money on Localized EBB Programs**
 - Caldwell Parish - \$2,000,000
 - Columbia - \$134,954
 - Grayson - \$189,156
 - Clarks - \$368,726

Understanding the Digital Literacy Issue – Caldwell Parish

- **“Digitally Illiterate” Estimated Statistic (Ages 18-64)*:**
 - Louisiana – As many as 462,000 Residents (16.4%)
 - Caldwell Parish – As many as 821 Residents (14%)
- **Potential Solutions:**
 - Public-Private Partnerships
 - Louisiana Board of Regents Programs
 - Collaborative Partnerships Between State Agencies
 - Localized Initiatives

CONTACT

Veneeth Iyengar

Executive Director

Office of Broadband Development & Connectivity

veneeth.iyengar@la.gov



@VeneethI