



FY 2020

October 1, 2019– September 31,

Annual Listing of Federally Obligated Projects



Local Governments Working Together Since 1967

Purpose of this Report

Federal Laws, under Moving Ahead for the Progress in the 21st Century (MAP-21) and Fixing America's Surface Transportation Act (FAST ACT), requires that the Capital Region Metropolitan Planning Organization, hereafter referred as "CRMPO", to publish a listing of projects using federal funds obligated annually.

The Federal Metropolitan Planning statute states:

“An annual listing of projects, including investments in pedestrian walkways and bicycle transportation facilities, for which Federal funds have been obligated in the preceding year shall be published or otherwise made available by the cooperative effort of the State, transit operator and metropolitan planning organization for public review. The listing shall be consistent with the categories identified in the TIP.”

The annual listing provides a record of project delivery for the previous federal fiscal year. This report will list all transportation projects authorized between October 1, 2019, and September 30, 2020. The listing is also intended to increase the awareness of government spending on transportation projects to the public. Obligations of federal funds means that a project has received federal commitment for reimbursement and does not necessarily mean that the project was initiated or completed in that year or indicate the total cost of that project.

This document is available for download on the CRPC website at <https://crpcla.org/>, under Publications

Background

Capital Regional Planning Commission is the Metropolitan Planning Organization (MPO) for the Baton Rouge urbanized area. Every metropolitan area with a population of more than 50,000 persons has a designated MPO to qualify for federal highway and transit funding. The MPO study area includes the entirety of East Baton Rouge and Ascension Parish and the urbanized portions of West Baton Rouge, Livingston, and Iberville Parish. This area contains the municipalities of Baton Rouge, Zachary, Baker, Central, Denham Springs, Walker, Livingston, Gonzales, Sorrento, Donaldsonville, Port Vincent, French Settlement, St. Gabriel, White Castle, Plaquemine, Addis, Brusly, and Port Allen. The MPO study area (Figure 1) is comprised of the Baton Rouge Urbanized Area (defined by the 2010 U.S. Census) and the greater Metropolitan Planning Area (MPA). Throughout this document this geographic area is referred to as the CRMPO.

CRMPO has responsibility for planning, programming, and coordinating federal-aid transportation investments within the Baton Rouge urbanized area. CRMPO is statutorily mandated to assess the transportation needs and deficiencies of the region with direction from public officials, citizens, modal representatives, and federal, state, and local planning departments. One of the primary tasks is to carry out the metropolitan transportation planning process that guides investment in the regional transportation system. As established by federal regulation, the Metropolitan Transportation Plan (MTP) “shall include both long-range and short-range strategies/actions that lead to the development of an integrated, multimodal, transportation system that facilitates the safe and efficient movement of people and goods in addressing current and future transportation demand.” (23 CFR 450.422, Federal Register May 27, 2016).

The planning process produces a suite of federally mandated documents that guide investment: the long-range Metropolitan Transportation Plan (MTP), the Transportation Improvement Plan (TIP), which programs the implementation of specific projects to address the identified issues and needs, and the annual Unified Planning Work Program (UPWP).

Capital Region Planning Commission
ANNUAL LISTING OF FEDERALLY OBLIGATED PROJECTS

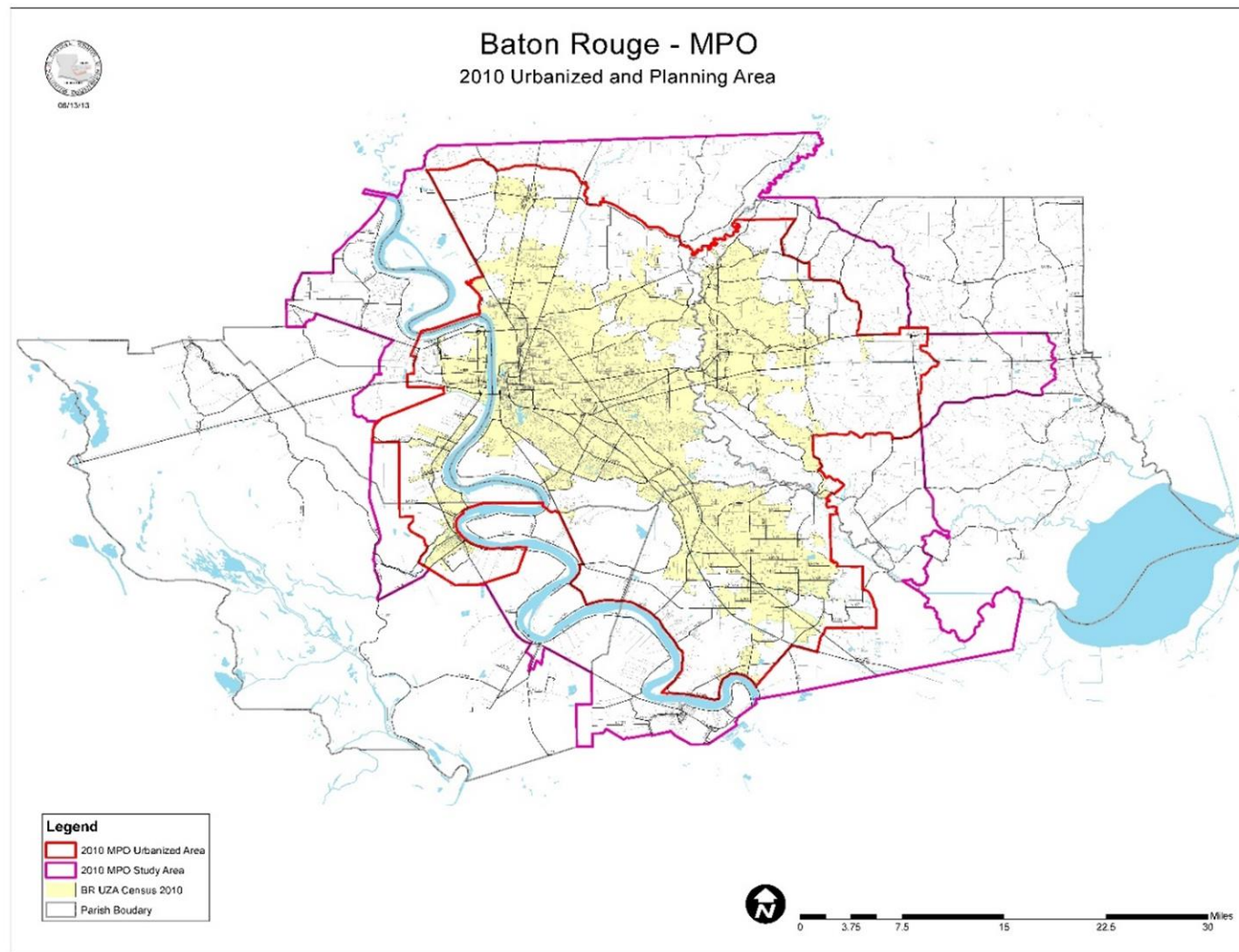


Figure 1. Capital Region MPO Urbanized Planning Area

Adoption of the MTP is the first step towards the implementation of a transportation project. Following formal adoption of the plan, a project can be programmed for design, right-of-way acquisition, or construction in the short-range Transportation Improvement Program (TIP), which identifies funding sources and the estimated amount of funding to be used. TIP is a management tool for implementing the projects programmed in the MTP. The projects in the TIP move towards implementation once the funds are obligated to them.

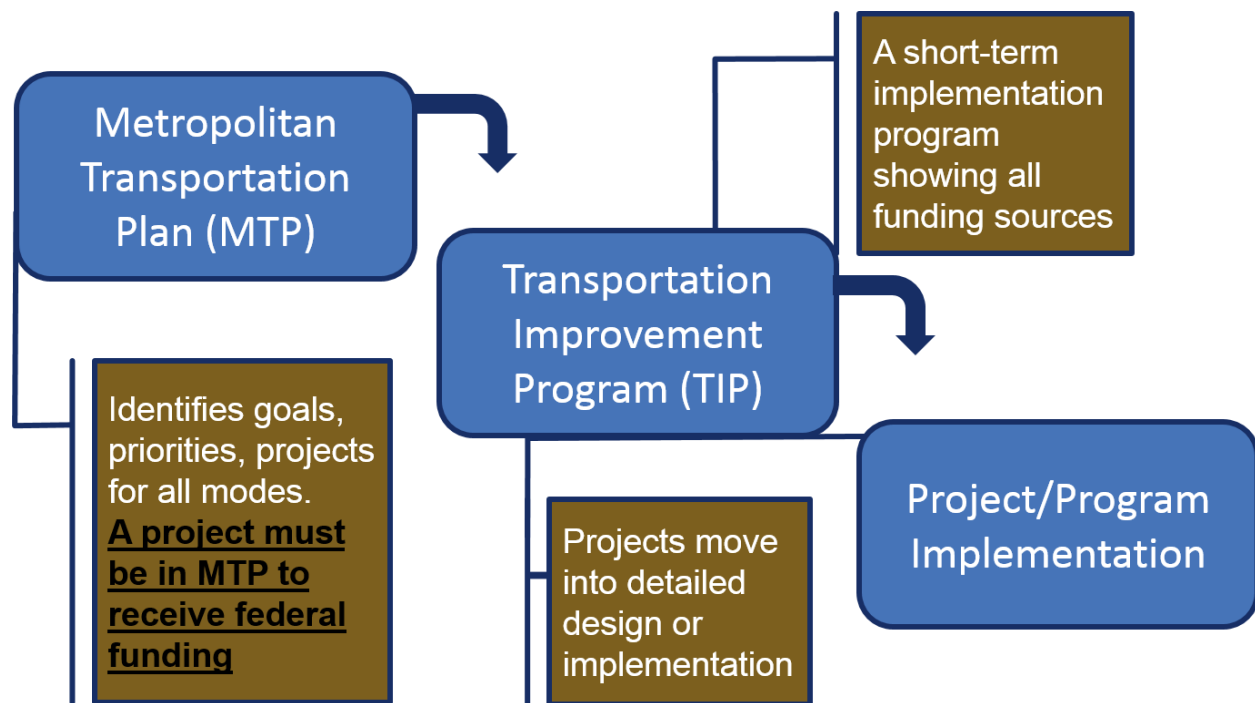


Figure 2: MPO Project Development and Implementation Process

Obligation Report

This report documents all the federally funded highway and transit projects or phases that have been obligated in the FFY 2020.

While federal funding is included in this report, no local or state funds are reported. During FY 2020, federal funding was distributed through the following funding categories:

- **Congestion Mitigation and Air Quality Improvement Program (CMAQ)** funding for projects that demonstrate the three following factors: transportation identity, emissions reduction, and location in or benefitting a nonattainment or maintenance area.
- FBR ON/OFF
- **Highway Safety Improvement Program (HSIP)** The goal of the program is to achieve a significant reduction in traffic fatalities and serious injuries on all public roads, including non-State-owned public roads and roads on tribal lands. The HSIP requires a data-driven, strategic approach to improving highway safety on all public roads that focuses on performance.
- **Federal Surface Transportation Program (STP)** This funding may be used for safety infrastructure improvements during preliminary engineering, design, and construction.
- **National Highway Performance Program (NHPP)** provides support for the condition and performance of the National Highway System (NHS), for the construction of new facilities on the NHS, and to ensure that investments of Federal-aid funds in highway construction are directed to support progress toward the achievement of performance targets established in a state's asset management plan for the NHS.
- **Railway – Highway Grade Crossing Program** This program provides funds for the elimination of hazards at railway-highway crossings.
- **Surface Transportation Program (STP >200k)** is used within the metropolitan area to fund roadway reconstruction, rehabilitation, traffic operational improvements, bicycle and pedestrian facilities, and studies.
- **Surface Transportation Program (STP Flex)** is a flexible funding category that is typically used by LaDOTD to fund roadway reconstruction, Intelligent Transportation System (ITS) projects, or bridge or interchange work.

Capital Region Planning Commission
ANNUAL LISTING OF FEDERALLY OBLIGATED PROJECTS

- **FTA Section 4510** funds are used for capital, operating assistance, preventive maintenance, and planning purposes for mass transportation improvements in urbanized areas.
- **FTA Section 4550** grants fund projects that create or enhance public transportation services and remove barriers for the disabled. New Freedom projects must be new (i.e., non-operational and/or unfunded prior to 2005) and must exceed the current requirements of the Americans with Disabilities Act of 1990. Activities funded by New Freedom must derive from the regional Coordinated Human Services Transportation Plan.
- **FTA Section 4560** Preventive Maintenance

Some projects include a mixture of different federal funding categories, and thus one project line under one funding source does not necessarily equal the total obligated funding for that project. Table 1-3 below are based on records obtained from LaDOTD, FHWA, CATS and FTA, as CRMPO does not directly participate in the obligation prices

Public Involvement

CRPC aims to proactively engage the public in the regional transportation planning process and embraces federal requirements that MPOs provide the public with complete information, timely public notice, full public access to key decisions, and early and continuing involvement in

developing the LRTP, TIP, and other products. CRPC's public involvement strategies include presenting information and educating the public, continually soliciting public input, helping information flow between the public and decision makers, and considering and responding to public concerns.

Summary of Federally Obligated Projects

A total of \$153.82 million was obligated in FY 2020 for 103 transportation projects. Of this, \$153.82 million was for highway/bridge projects and \$4.09 million for transit projects. Highway Projects accounted for 97.34 % of funds with transit accounted for the remaining 2.66 %. Figure 2 below illustrates the distribution of funds between transit and highway projects:

	Federal Funding	Percentage of Total
Highway	\$149,729,884.62	97.34%
Transit	\$4,088,734.00	2.66%
Total	\$153,818,618.62	

Figure 2. FY 2020 Federally Obligated Projects Summary

Table 1. List of Highway Project FY 2020

Funding Source	Federal Cost	Project Number	Project Phase	Project Location/Limits	Project Type
EB, NHPP, NHPP-E	\$353,861.37	H.000358	Engineering	US 190: LA 415 & RR OVERPASS REPL (HBI)	Railroad Crossing
FBR-ON/OFF, NHPP, NHPP-E	\$43,323,760.56	H.001234	Engineering, Environmental, Utilities, Construction	LA 1 : PORT ALLEN CANAL BR REPL (PH1)(HBI)	New Bridge
STP FLEX	\$489,175.11	H.002297	Feasibility	LA 37: SULLIVAN ROAD - LIBERTY ROAD	Rehabilitation
STP FLEX	\$662,535.75	H.002370	Construction	LA 42 (US 61 - LA 44)	Rehabilitation
STP FLEX	\$94,581.19	H.002375	Engineering, Construction	AMITE R.BR. NEAR FRENCH SETTLEMENT	New Bridge

Capital Region Planning Commission
ANNUAL LISTING OF FEDERALLY OBLIGATED PROJECTS

CMAQ	\$290,806.87	H.002822	Construction	NICHOLSON @ BRIGHTSIDE LANE	Intersection Improvements
NHPP, STP FLEX	\$16,436,110.97	H.003425	Construction	I-12: LA 63 - TANGIPAHOA PARISH LINE	Rehabilitation
STP FLEX	\$1,702,157.89	H.004100	Engineering	I-10: LA 415 TO ESSEN ON I-10 AND I-12	Rehabilitation
NHPP	\$313,553.54	H.004104	Engineering	PECUE LANE/ I-10 INTERCHANGE	Intersection Improvements
STP>200K	\$2,920,251.60	H.005121	Engineering	LA 1/LA 415 CONNECTOR	New Road
DEMOID 129	\$163,000.67	H.006500	Construction	BATON ROUGE RIVERFRONT DEVELOPMENT TRANS	Plan Update
CMAQ	\$6,430,226.85	H.007160	Construction	EBR COMPUTERIZED TRAFFIC SIGNAL, PH VB	Signal Upgrades
CMAQ	\$103,964.12	H.007855	Construction	LA 431 @ LA 934 INTERSECTION IMPROVEMENT	Intersection Improvements
NHPP	\$243,693.57	H.009199	Construction	I-10:I-110 TO ACADIAN TRWY PAVE MARKINGS	Rehabilitation
FBR-OFF	\$62,478.12	H.009484	Engineering	LA 75: BAYOU BREAU BRIDGE	New Bridge
STP FLEX	\$161,951.03	H.010253	Engineering	BLUEBONNET BLVD. PUMP STAT. IMP LA 1248	Pump Station Improvements
NHPP	\$78,361.05	H.010558	Construction	I-12 WDN: .5 M W SATSUMA-SATSUMA RAMPS	Widening
NHPP	\$330,282.71	H.010652	Engineering	LA 73: US 61 (AIRLINE) - ESSEN LANE	Rehabilitation
STP FLEX	\$4,205,983.80	H.010909	ROW, Utilities	LA 44: WIDENING AND ROUNDAABOUT AT LA 941	Intersection Improvements
STP FLEX	\$247,776.43	H.010960	Engineering	LA 30 ROUNDABOUTS @ TANGER MALL & I-10	Intersection Improvements
NHPP, STP FLEX	\$1,773,289.68	H.011098	Engineering, ROW	LA 30: SOUTH BLVD - W CHIMES ST	Rehabilitation
HSIP, HSIPPEN	\$233,001.61	H.011261	Engineering, Construction	LA427: S. ACADIAN THRUWAY, I-10-LA73 (BR)	Rehabilitation
HSIP, STP FLEX	\$537,632.43	H.011295	Construction, Engineering	LA 73 (GOVT ST) EAST BLVD - LOBDELL AVE	Rehabilitation
HSIPPEN, NHPP	\$436,990.90	H.011314	Construction	LA 22: NEAR I-10 GEOMETRIC IMPROV	Intersection Improvements
CMAQ	\$478,066.95	H.011496	ROW, Construction	QUAIL DR: TURN LANE AT PERKINS (LA 427)	Intersection Improvements
CMAQ	\$89,409.83	H.011558	Utilities	ACADIAN TRAIL (WEST BATON ROUGE)	Bike/Ped
STP FLEX	\$83,316.03	H.011617	Construction	LA75 & LA 141-1: CP, OVLAY & STAB, OVLAY	Rehabilitation
NHPP	\$50,000.00	H.011708	Construction	US 61 AT US 190 INTERCHANGE SIGNING	Intersection Improvements

Capital Region Planning Commission
ANNUAL LISTING OF FEDERALLY OBLIGATED PROJECTS

STP FLEX	\$4,687,773.36	H.011824	Construction	LA 1026: ROUNDABOUT AT BUDDY ELLIS RD	Intersection Improvements
STP>200K	\$234,040.80	H.011825	Construction	BUDDY ELLIS ROAD IMPROVEMENTS	Rehabilitation
STP>200K	\$1,220,190.80	H.011842	Construction	CHOCTAW DRIVE PAVEMENT PRESERVATION	Rehabilitation
NHPP	\$240,201.86	H.012076	Construction	LA 415: IMPROVEMENTS AT PLANTATION AVE	Rehabilitation
NHPP	\$681,882.03	H.012082	Construction	LA 1: PORT ALLEN BR INT REPAIRS (HBI)	Rehabilitation
NHPP	\$440,264.82	H.012169	Engineering	I-10: IBERVILLE P/L - W END OF BR 290	Rehabilitation
HSIP	\$516,767.66	H.012276	Engineering, Construction	US 61: J-TURNS AT THOMAS RD.	Intersection Improvements
STP FLEX	\$3,396,789.64	H.012308	Utilities, ROW	COOK ROAD IMP: LA16 TO JUBAN CROSSING	Rehabilitation
HSIPPEN	\$419,851.97	H.012324	Feasibility	US61:FL BLVD-MISS RIVER BR(TRAFFIC STDY)	Traffic Study
NHPP	\$257,179.06	H.012395	Construction	LA 415 & US 190: OVERLAY & PATCHING	Rehabilitation
NHPP	\$71,406.96	H.012422	Construction	I-110: INTERCHANGE MODIFICATION @TERRACE	Intersection Improvements
NHPP	\$413,890.67	H.012587	Engineering	I-10: W END OF BR 290 - W END OF LA 415	Rehabilitation
STP FLEX	\$731,262.16	H.012604	Construction	LA 77: GROSSE TETE BR HYD REPAIRS (HBI)	New Bridge
NHPP	\$51,667.45	H.012640	Construction	LA3246 @I-10 SIGNAL PERFORMANCE MEASURE	Signal Upgrades
CMAQ, STP>200K	\$1,212,675.35	H.012730	Feasibility	BRMPO TRAVEL DEMAND MANAGEMENT PRGM 2017	Plan Update
STP FLEX	\$192,675.58	H.012749	Construction	SIGNAL COMMUNICATIONS UPGRADE PHASE 1	Signal Upgrades
STP FLEX	\$420,390.02	H.012902	Utilities	LA 327 : S. RIVER RD- LA 30	Rehabilitation
STP FLEX	\$314,339.52	H.013107	Construction	LA 42: KCS RR CROSSING (BATON ROUGE)	Railroad Crossing
NHPP	\$89,378.74	H.013115	Construction	I-110: 625' S OF SPANISH TOWN RD - US 61	Rehabilitation
FBR-OFF	\$919,006.36	H.013166	Construction	WHITTINGTON ROAD OVER GRAYS CREEK	New Bridge
NHPP, STP FLEX	\$8,991,337.84	H.013191	Engineering, Construction, Utilities	LA 1: LA 75 - PORT ALLEN CANAL BR	Rehabilitation
NHPP, NHPP-E, STP FLEX	\$2,074,713.34	H.013261	Engineering, Construction, Feasibility	I-110 ITS DEPLOYMENT	System Upgrade

Capital Region Planning Commission
ANNUAL LISTING OF FEDERALLY OBLIGATED PROJECTS

CMAQ	\$2,040,310.76	H.013267	Construction	SCOTLANDVILLE PKWY TO DWTN BR TRAIL-PH 1	Bike/Ped
STP FLEX	\$4,006,923.89	H.013284	Feasibility	MRB SOUTH GBR: LA 1 TO LA 30 CONNECTOR	Rehabilitation
RCAF	\$288,202.87	H.013318	Construction	LA 1248: LA 30 - I-10 NORTH C OF A (RT)	Rehabilitation
NHPP	\$1,973,755.06	H.013328	Construction	LA 73: LA 3064 / ESSEN - LA 426 (RT II)	Rehabilitation
STP FLEX	\$235,758.73	H.013329	Construction	LA 42: LA 427 - LA 3246 (RT II)	Rehabilitation
STP FLEX	\$1,285,214.56	H.013330	Construction	LA 42: LA 3246 - GARDERE LANE (RT II)	Rehabilitation
NHPP-E	\$642,633.23	H.013331	Construction	LA 427: LA 3064 -ACADIAN THRUWAY (RT II)	Rehabilitation
STP FLEX	\$5,575,251.60	H.013387	Construction	DIST. 61 FLASHING YELLOW ARROW PART 1	Signal Upgrades
NHPP	\$334,043.32	H.013482	Engineering	I-10 WBR QUEUE WARNING SYSTEM PROJECT	Signal Upgrades
STP FLEX	\$153,445.14	H.013485	Construction	LA 73: LA 948 / HIGHLAND - US 61 (RT II)	Rehabilitation
HSIPPEN	\$351,650.14	H.013502	Feasibility	2018-2023 SHSP CAPITAL REG. COALITION	Safety
HSIPPEN	\$460,763.00	H.013532	Construction	DENHAM SPRINGS ROAD SIGNING & STRIPING	Rehabilitation
STP>200K	\$1,220,041.43	H.013546	Construction	THIBODEAUX ROAD IMPROVEMENTS	Rehabilitation
STP>200K	\$968,786.07	H.013553	Construction	PENDARVIS LANE IMPROVEMENTS PHASE 1	Rehabilitation
NHPP, NHPP-E, STP FLEX	\$2,543,520.45	H.013579	Construction	PECUE LANE/I-10 INTERCHANGE PHASE II	Intersection Improvements
STP>200K	\$630,257.49	H.013674	Construction	BENTON LANE IMPROVEMENTS	Rehabilitation
HSIP	\$323,906.57	H.013682	Construction	US 190: RCUT @ LONGBOW DR	Intersection Improvements
STP FLEX	\$3,011,804.63	H.013724	Construction	LA 16: LA 42 to LA 1034	Rehabilitation
NHPP	\$2,103,334.85	H.013727	Construction	LA 30: LA 74 - ASCENSION P/L	Rehabilitation
NHPP	\$6,018,016.92	H.013731	Construction	US 61: FLORIDA BLVD - GREENWELL ST	Rehabilitation
RAIL HE	\$1,033,687.95	H.013764	Construction	WEST & HOMESTEAD: UP RR XINGS(IBERVILLE)	Intersection Improvements
NHPP	\$2,379,425.54	H.013830	Construction	EBR SIGNAL DETECTION UPGRADE	Signal Upgrades
NHPP	\$724,000.00	H.013837	Engineering	KCS BRIDGE REPLACEMENT AT ACADIAN	New Bridge
NHPP	\$72,989.28	H.013867	Construction	I-10 WB: LA 415 EXIT RAMP IMPROVEMENTS	Intersection Improvements

Capital Region Planning Commission
ANNUAL LISTING OF FEDERALLY OBLIGATED PROJECTS

STP>200K-E	\$397,836.65	H.014188	Construction	LA 986 PAVEMENT REHABILITATION	Rehabilitation
RAIL HE	\$71,071.65	H.014466	Engineering	LA 1 @ EVERGREEN: UPRR XING (IBERVILLE)	Intersection Improvements
SPR OPT, STP>200K	\$360,000.00	H.972386	Feasibility	BTR MPO TRANS PLAN UPDATE SFYS 2021/2022	Plan Update
TOTAL	\$149,080,538.40				

Table 2. Breakdown of Obligations Amounts among Funding Sources

Funding Source	Total Federal Funds
CMAQ	\$9,724,960.38
DEMO	\$204,940.67
EB	\$214,820.78
FBR-OFF	\$1,056,543.63
HSIP	\$1,109,961.45
HSIPPEN	\$4,482,154.89
NHPP	\$88,367,435.04
NHPP-E	\$3,180,459.94
RAIL HE	\$1,137,561.90
RCAF	\$326,700.59
SPR OPT	\$180,000.00
STP FLEX	\$30,942,909.67
STP>200K	\$8,801,435.68
TOTAL	\$149,729,884.62

Since there are a large amount of funding sources for the highway projects, Table 2 is providing a listing of the project funding sources and amount, so the distribution of funds could be easier understood.

Figure 3. FY 2020 Federally Obligated Highway/Bridge Projects by Funding Category

Funding Source	% of Total Federal Funding
CMAQ	6.50%
DEMO	0.14%
EB	0.14%
FBR-OFF	0.71%
HSIP	0.74%
HSIPPEN	2.99%
NHPP	59.02%
NHPP-E	2.12%
RAIL HE	0.76%
RCAF	0.22%
SPR OPT	0.12%
STP FLEX	20.67%
STP>200K	5.88%
TOTAL	100.00%

Figure 3 shows the distribution of funds between various funding sources for the highway projects with the largest percentage of highway/bridge funds (33% total) obligated to NHPP funding. These funds are used within the metropolitan area to fund roadway reconstruction, rehabilitation, traffic operational improvements, bicycle and pedestrian facilities, and studies

Capital Region Planning Commission
ANNUAL LISTING OF FEDERALLY OBLIGATED PROJECTS

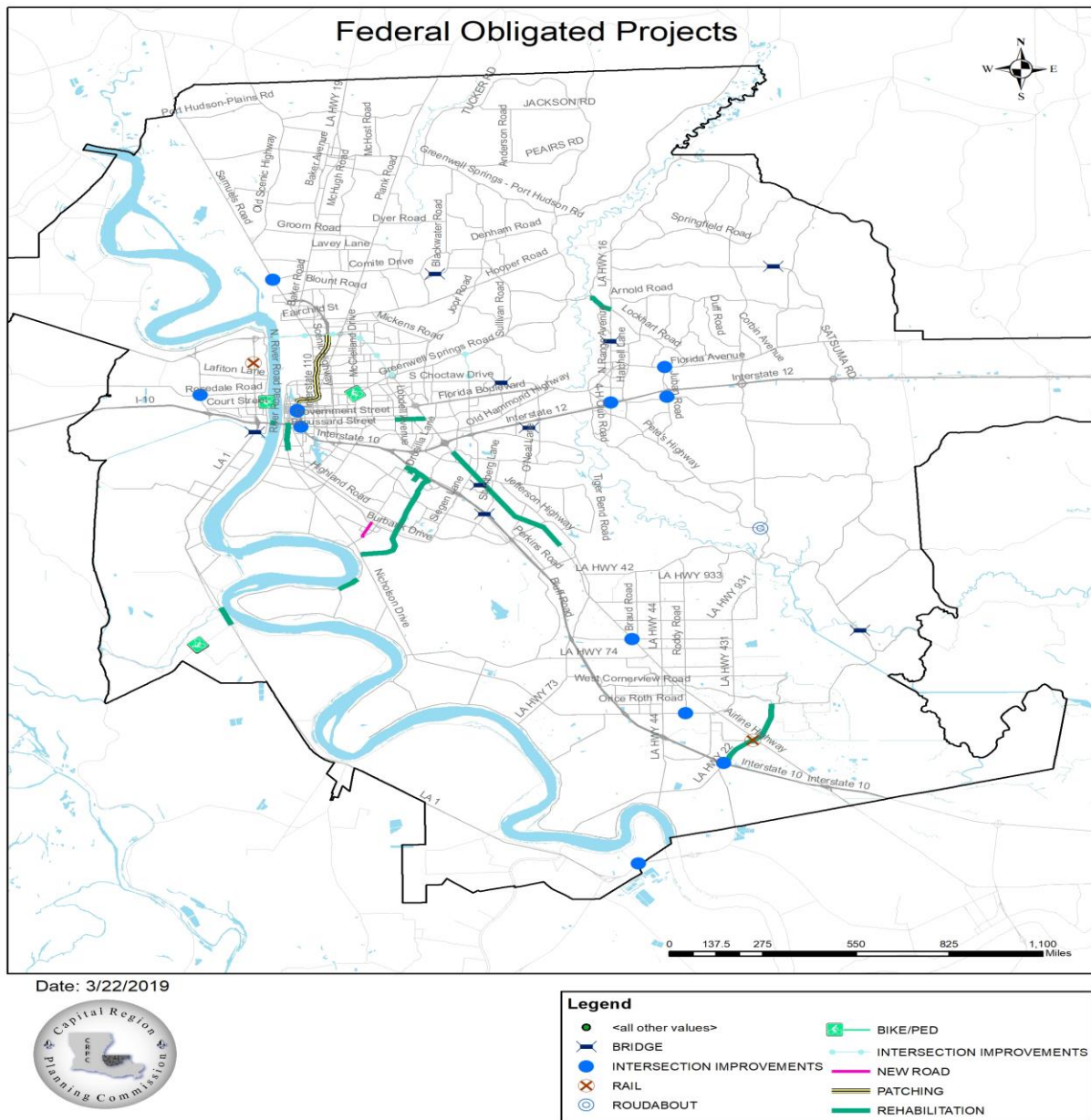


Figure 4. Maps of Projects throughout the CRMPO Boundaries

Along with the tables for the highway projects, Figure 4, a map of the highways projects is also provided to display the locations of the projects within the Capital Regions. Also provided in Appendix A, are individual maps to offer a closer look at the location of each project.

Table 3. Listing of Transit Projects

Echo	Description	Echo total	Accounting description of grant type
20-21	Bus washer	\$23,560	4510 FTA Capital Projects
20-22	Lighting and doors	\$21,811	4510 FTA Capital Projects
20-23	shelters	\$18,499	4510 FTA Capital Projects
20-28	Shelters	\$280,620	4510 FTA Capital Projects
20-31	shelters	\$11,792	4510 FTA Capital Projects
20-1	Chargers for electric buses	\$68,000	4510 FTA Capital Projects
20-3	Bus washer	\$179,773	4510 FTA Capital Projects
20-4	Bus washer	\$129,960	4510 FTA Capital Projects
20-10	Bus lease	\$4,381	4510 FTA Capital Projects
20-11	Bus lease	\$274,535	4510 FTA Capital Projects
20-12	Bus washer	\$36,317	4510 FTA Capital Projects
20-15	Bus washer	\$20,884	4510 FTA Capital Projects
20-32	Bus lease	\$250,277	4510 FTA Capital Projects
20-14	CRPC	\$20,658	4550 Planning
20-17	CRPC	\$8,821	4550 Planning
20-27	Metropolitan Planning	\$41,415	4550 Planning
20-2	Preventive maintenance	\$280,015	4560 Preventive Maintenance
20-5	Preventive maintenance	\$361,889	4560 Preventive Maintenance
20-7	Preventive maintenance	\$325,835	4560 Preventive Maintenance
20-8	Preventive maintenance	\$166,840	4560 Preventive Maintenance
20-9	Preventive maintenance	\$644,828	4560 Preventive Maintenance
20-13	Preventive maintenance	\$118,024	4560 Preventive Maintenance
20-16	Design	\$22,920	4560 Preventive Maintenance
20-18	Preventive maintenance - 10%	\$338,634	4560 Preventive Maintenance
20-19	Preventive Maintenance	\$300,000	4560 Preventive Maintenance
20-20	Preventive Maintenance	\$61,366	4560 Preventive Maintenance
20-6	Design	\$77,080	4560 Preventive Maintenance
TOTAL		\$4,088,734	

Figure 5. FY 2020 Federally Obligated Transit Projects by FTA Funding Category

Federal Funding Source	Funding Amount
4510 FTA Capital Projects	\$1,320,409
4550 Planning	\$70,894
4560 Preventive Maintenance	\$2,697,431
TOTAL	\$4,088,734

Figure 5 summarizes the funding for the transit projects sorted by funding source. Majority of the transit funding comes from FTA Section 5307. These funds are used for capital, operating assistance, preventive maintenance, and planning purposes for mass transportation improvements in urbanized areas.

Capital Region Planning Commission
ANNUAL LISTING OF FEDERALLY OBLIGATED PROJECTS