

FY 2019

October 1, 2018– September 31, 2019

# Annual Listing of Federally Obligated Projects



## **Purpose of this Report**

Federal Laws, under Moving Ahead for the Progress in the 21<sup>st</sup> Century (MAP-21) and Fixing America's Surface Transportation Act (FAST ACT), requires that the Capital Region Metropolitan Organization, hereafter referred as "CRMPO", to publish a listing of projects using federal funds obligated annually.

The Federal Metropolitan Planning statute states:

*“An annual listing of projects, including investments in pedestrian walkways and bicycle transportation facilities, for which Federal fund have been obligated in the preceding year shall be published or otherwise made available by the cooperative effort of the State, transit operator and metropolitan planning organization for public review. The listing shall be consistent with the categories identified in the TIP.”*

The annual listing provides a record of project delivery for the previous federal fiscal year. This report will list all transportation projects authorized between October 1, 2019 and September 30, 2020. The listing is also intended to increase the awareness of government spending on transportation projects to the public. Obligations of federal funds means that a project has received federal commitment for reimbursement and does not necessarily mean that the project was initiated or completed in that year or indicate the total cost of that project.

This document is available for download on the CRPC website at <https://crpcla.org/>, under Publications

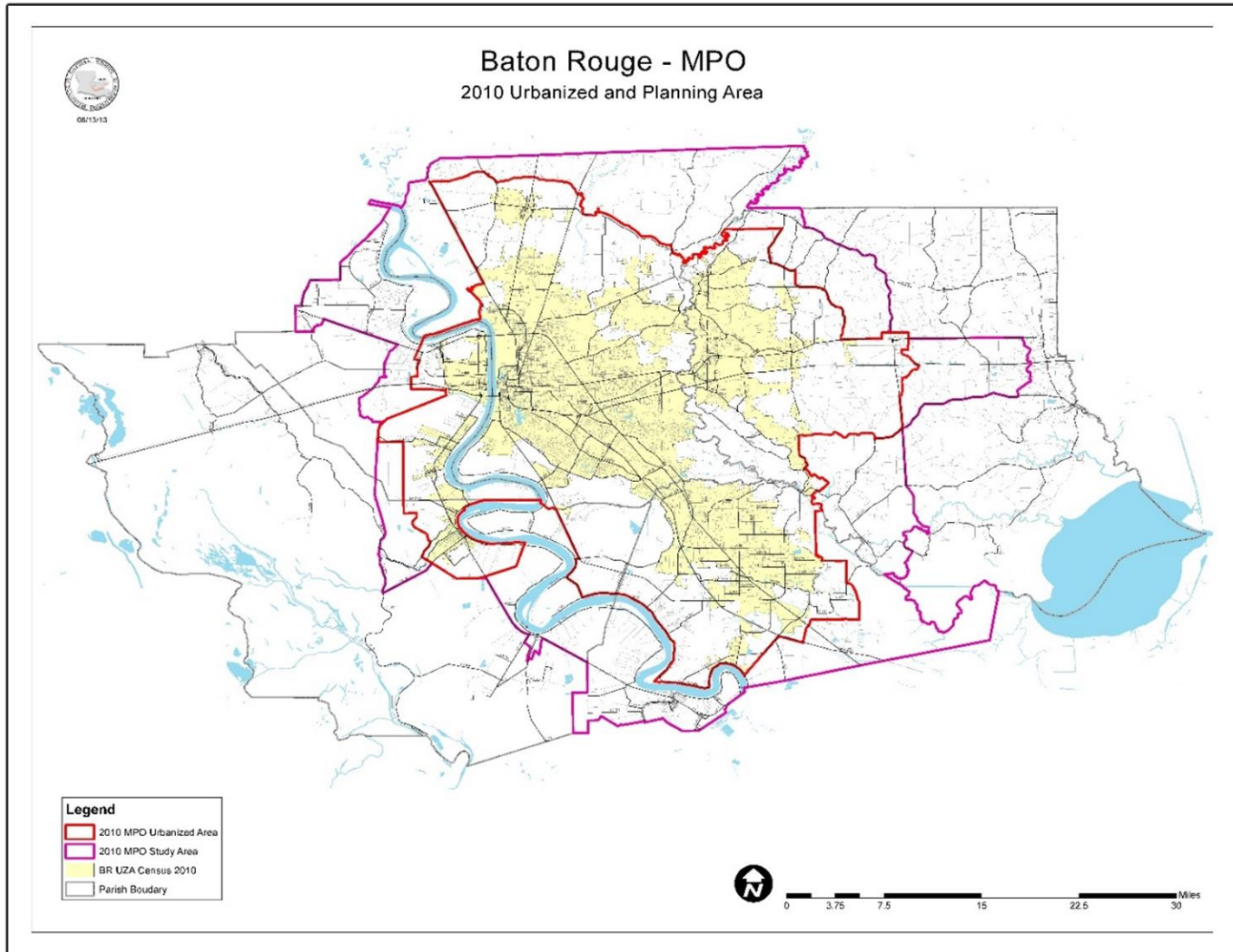
## **Background**

Capital Regional Planning Commission is the Metropolitan Planning Organization (MPO) for the Baton Rouge urbanized area. Every metropolitan area with a population of more than 50,000 persons has a designated MPO in order to qualify for federal highway and transit funding. The MPO study area includes the entirety of East Baton Rouge and Ascension Parish and the urbanized portions of West Baton Rouge, Livingston and Iberville Parish. This area contains the municipalities of Baton Rouge, Zachary, Baker, Central, Denham Springs, Walker, Livingston, Gonzales, Sorrento, Donaldsonville, Port Vincent, French Settlement, St. Gabriel, White Castle, Plaquemine, Addis, Brusly, and Port Allen. The MPO study area (Figure 1) is comprised of the Baton Rouge Urbanized Area (defined by the 2010 U.S. Census) and the greater Metropolitan Planning Area (MPA). Throughout this document this geographic area is referred to as the CRMPO.

CRMPO has responsibility for planning, programming, and coordinating federal-aid transportation investments within the Baton Rouge urbanized area. CRMPO is statutorily mandated to assess the transportation needs and deficiencies of the region with direction from public officials, citizens, modal representatives and federal, state and local planning departments. One of the primary tasks is to carry out the metropolitan transportation planning process that guides investment in the regional transportation system. As established by federal regulation, the Metropolitan Transportation Plan (MTP) “shall include both long-range and short-range strategies/actions that lead to the development of an integrated, multimodal, transportation system that facilitates the safe and efficient movement of people and goods in addressing current and future transportation demand.” (23 CFR 450.422, Federal Register May 27, 2016).

The planning process produces a suite of federally-mandated documents that guide investment: the long-range Metropolitan Transportation Plan (MTP), the Transportation Improvement Plan (TIP), which programs the implementation of specific projects to address the identified issues and needs, and the annual Unified Planning Work Program (UPWP).

Capital Region Planning Commission  
ANNUAL LISTING OF FEDERALLY OBLIGATED PROJECTS



**Figure 1. Capital Region MPO Urbanized Planning Area**

Adoption of the MTP is the first step towards the implementation of a transportation project. Following formal adoption of the plan, a project can be programmed for design, right-of-way acquisition, or construction in the short-range Transportation Improvement Program (TIP), which identifies funding sources and the estimated amount of funding to be used. TIP is a management tool for implementing the projects programmed in the MTP. The projects in the TIP move towards implementation once the funds are obligated to them.

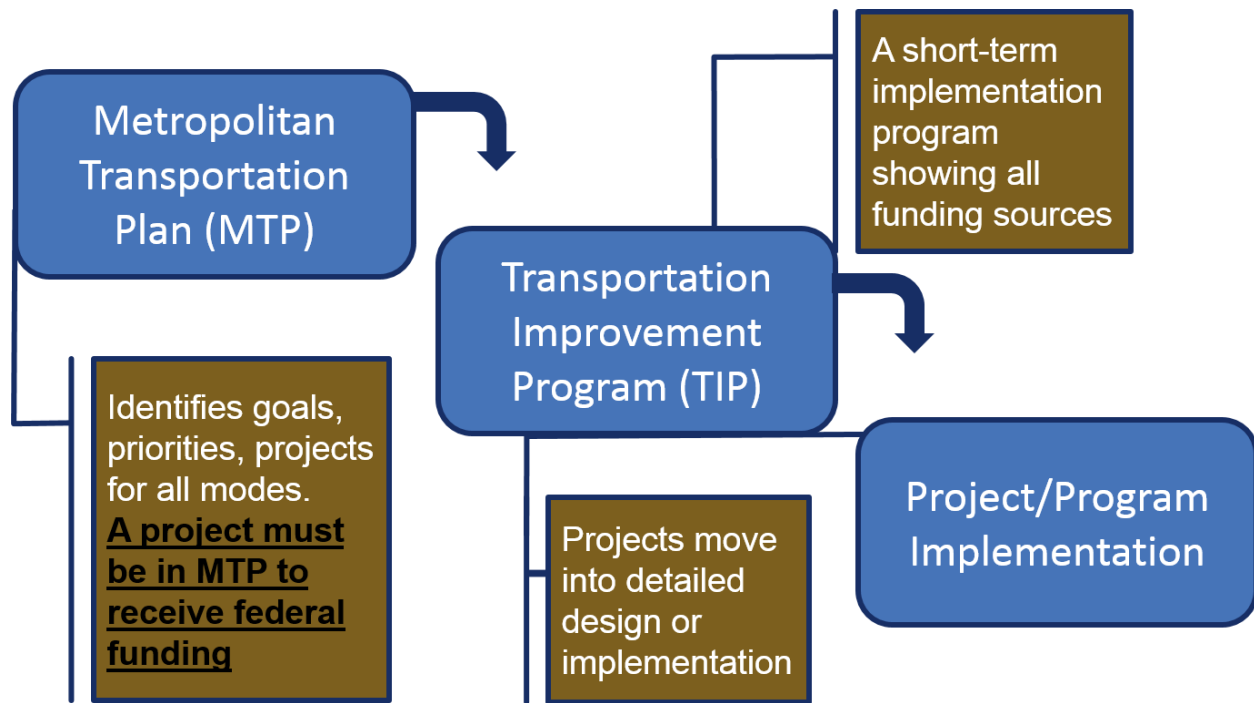


Figure 2: MPO Project Development and Implementation Process

## Obligation Report

This report documents all the federally funded highway and transit projects or phases that have been obligated in the federal fiscal year 2019.

While federal funding is included in this report, no local or state funds are reported. During FY 2019, federal funding was distributed through the following funding categories:

- **Congestion Mitigation and Air Quality Improvement Program (CMAQ)** funding for projects that demonstrate the three following factors: transportation identity, emissions reduction, and location in or benefitting a nonattainment or maintenance area.

- **Highway Safety Improvement Program (HSIP)** The goal of the program is to achieve a significant reduction in traffic fatalities and serious injuries on all public roads, including non-State-owned public roads and roads on tribal lands. The HSIP requires a data-driven, strategic approach to improving highway safety on all public roads that focuses on performance.
- **Federal Surface Transportation Program (STP)** This funding may be used for safety infrastructure improvements during preliminary engineering, design, and construction.
- **National Highway Performance Program (NHPP)** provides support for the condition and performance of the National Highway System (NHS), for the construction of new facilities on the NHS, and to ensure that investments of Federal-aid funds in highway construction are directed to support progress toward the achievement of performance targets established in a State's asset management plan for the NHS.
- **ER Funding** emergency supplemental appropriations to help states respond and recover from recent hurricanes, wildfires and other disasters.
- **Recreational Trails Program (RTP)** provides funds to the States to develop and maintain recreational trails and trail related facilities for both nonmotorized and recreational trail uses.
- **Safe Routes to School Program (SRTS)** an approach that promotes walking and bicycling to school through infrastructure improvements, enforcement, tools safety education, and incentives to encourage walking and bicycling to school.
- **Railway – Highway Grade Crossing Program** This program provides funds for the elimination of hazards at railway-highway crossings.



Capital Region Planning Commission  
ANNUAL LISTING OF FEDERALLY OBLIGATED PROJECTS

- **Surface Transportation Program (STP >200k)** is used within the metropolitan area to fund roadway reconstruction, rehabilitation, traffic operational improvements, bicycle and pedestrian facilities, and studies.
- **Surface Transportation Program (STP Flex)** is a flexible funding category that is typically used by LaDOTD to fund roadway reconstruction, Intelligent Transportation System (ITS) projects, or bridge or interchange work.
- **FTA Section 5307** funds are used for capital, operating assistance, preventive maintenance and planning purposes for mass transportation improvements in urbanized areas.
- **FTA Section 5317 New Freedom** grants fund projects that create or enhance public transportation services and remove barriers for the disabled. New Freedom projects must be new (i.e., non-operational and/or unfunded prior to 2005) and must exceed the current requirements of the Americans with Disabilities Act of 1990. Activities funded by New Freedom must derive from the regional Coordinated Human Services Transportation Plan.
- **Bus Rapid Transit (BRT)** a bus based public transportation system designed to improve capacity and reliability to a conventional bus system. BRT aims to combine the capacity and speed of a metro with flexibility, lower cost and simplicity of a bus system

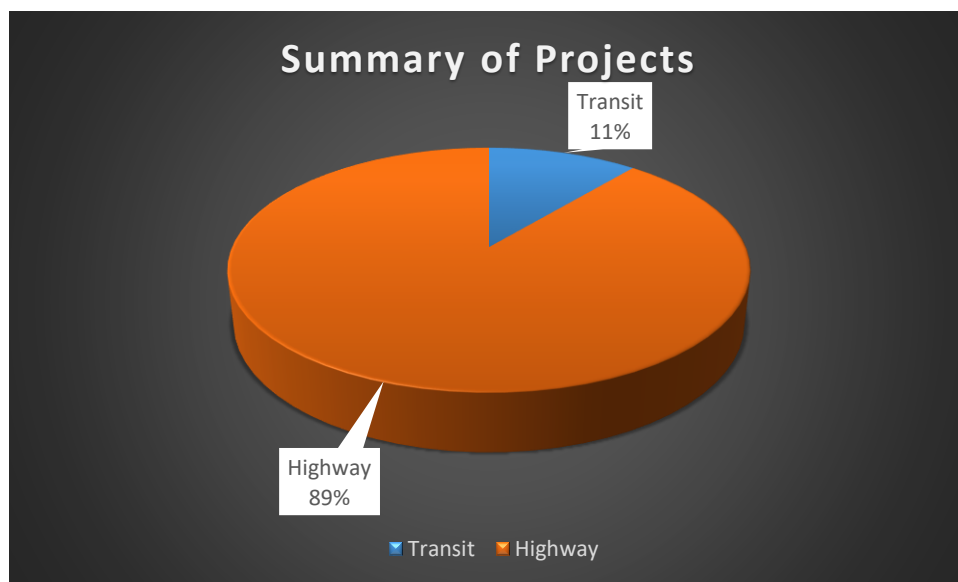
Some projects include a mixture of different federal funding categories, and thus one project line under one funding source does not necessarily equal the total obligated funding for that project. Table 1-3 below are based on records obtained from LaDOTD, FHWA, CATS and FTA, as CRMPO does not directly participate in the obligation prices

## Public Involvement

CRPC aims to proactively engage the public in the regional transportation planning process and embraces federal requirements that MPOs provide the public with complete information, timely public notice, full public access to key decisions, and early and continuing involvement in developing the LRTP, TIP, and other products. CRPC’s public involvement strategies include presenting information and educating the public, continually soliciting public input, helping information flow between the public and decision makers, and considering and responding to public concerns.

## Summary of Federally Obligated Projects

A total of \$108.55 million was obligated in FY 2019. Of this, \$96.52 million was for 41 highway/bridge projects and \$12.03 million for transit projects. Highway Projects accounted for 89 percent of funds with transit accounted for the remaining 11 percent. Figure 2 below illustrates the distribution of funds between transit and highway projects:



**Figure 2. FY 2019 Federally Obligated Projects Summary**



Capital Region Planning Commission  
ANNUAL LISTING OF FEDERALLY OBLIGATED PROJECTS

**Table 1. List of Highway Project FY 2019**

Project Number	Prefix	Total of all funds	Phase	Project Limits	Project Description	FHWA Auth Date	Parish
H.012276	HSIP	1,051,732.72	Construction	US 61: J-TURNS AT THOMAS RD.	4R Reconstruction, Added Capacity	26-Oct-18	EBR
H.013485	STP FLEX	2,351,739.81	Construction	LA 73: LA 948 / HIGHLAND - US 61 (RT II)	4R Resurfacing	26-Oct-18	EBR
H.013485	STP FLEX	151,808.17	Construction	LA 73: LA 948 / HIGHLAND - US 61 (RT II)	4R Resurfacing	26-Oct-18	EBR
H.012324	HSIPPEN	419,851.97	Feasibility	US61:FL BLVD-MISS RIVER BR(TRAFFIC STDY)	Planning	7-Nov-18	EBR
H.010795	HSIP	5,457.83	Engineering	LA 42: ROUNDABOUT AT JOE SEVARIO ROAD	Preliminary Engineering	13-Nov-18	ASC
H.010795	HSIP	10,538.35	Engineering	LA 42: ROUNDABOUT AT JOE SEVARIO ROAD	Preliminary Engineering	13-Nov-18	ASC
H.013329	STP FLEX	1,880,514.49	Construction	LA 42: LA 427 - LA 3246 (RT II)	4R Resurfacing	15-Nov-18	EBR
H.013329	STP FLEX	172,574.46	Construction	LA 42: LA 427 - LA 3246 (RT II)	4R Resurfacing	15-Nov-18	EBR
H.012078	STP FLEX	726,287.75	Construction	LA 429: IMPROVEMENTS AT LA 431	4R Reconstruction, Added Capacity	27-Nov-18	ASC
H.01012	HSIP	1,649,858.18	Construction	LA 16: ROUNDABOUT @ LA 447	4R Reconstruction, No Added Capacity	10-Dec-18	LIV
H.011540	FBR-OFF	871,997.06	Construction	BABIN ROAD / BAYOU NARCISSE	4R Reconstruction, No Added Capacity	12-Dec-18	ASC
H.011540	FBR-OFF	31,548.84	Construction	BABIN ROAD / BAYOU NARCISSE	Bridge Replacement, No Added Capacity	12-Dec-18	ASC
H.011540	FBR-OFF	189,054.75	Construction	BABIN ROAD / BAYOU NARCISSE	Bridge Replacement, No Added	12-Dec-18	ASC
H.012902	STP FLEX	338,483.57	Utilities	LA 327: S. RIVER RD- LA 30	Safety	12-Dec-18	EBR
H.013458	FBR-OFF	93,240.05	Engineering	MANCHAC ACRES RD & H H WILSON RD BRIDGES	Preliminary Engineering	19-Dec-18	ASC
H.013230	NHPP	1,022,302.10	Construction	LA 16: COLTON CREEK TO LA 64	4R Resurfacing	11-Feb-19	LIV
H.013230	NHPP	205,843.73	Construction	LA 16: COLTON CREEK TO LA 64	4R Resurfacing	11-Feb-19	LIV
H.012395	NHPP	6,114,675.57	Construction	LA 415 & US 190: OVERLAY & PATCHING	4R Resurfacing	20-Feb-19	WBR
H.012395	STP FLEX	78,748.69	Construction	LA 415 & US 190: OVERLAY & PATCHING	4R Resurfacing	20-Feb-19	WBR
H.012395	NHPP	854,200.93	Construction	LA 415 & US 190: OVERLAY & PATCHING	4R Resurfacing	20-Feb-19	WBR
H.012395	STP FLEX	24,166.44	Construction	LA 415 & US 190: OVERLAY & PATCHING	4R Resurfacing	20-Feb-19	WBR
H.012875	NHPP	1,614,327.77	Construction	I-12: LA 1026 (JUBAN RD) INTCHG LIGHTING	Safety	28-Feb-19	LIV
H.012311	STP FLEX	421,529.05	Feasibility	LA 429 CONNECTOR (LA 30/LA 73 TO US 61)	Planning	25-Mar-19	ASC
H.013852	NHPP	986,395.28	Construction	LA 1: SHOULDER IMPROVEMENTS	4R Restoration and Rehabilitation	2-Apr-19	WBR

Capital Region Planning Commission  
ANNUAL LISTING OF FEDERALLY OBLIGATED PROJECTS

H.000337	NHPP	12,163,504.70	Construction	US 61: BAYOU MANCHAC & FRANCOIS BRS.	Bridge Replacement, No Added Capacity	4-Apr-19	EBR, ASC
H.012640	NHPP	171,912.84	Construction	LA3246 @ I-10 SIGNAL PERFORMANCE MEASURE	Traffic Management/ Engineering - HOV	8-Apr-19	EBR
H.012640	NHPP	56,980.06	Construction	LA3246 @ I-10 SIGNAL PERFORMANCE MEASURE	Traffic Management/ Engineering - HOV	8-Apr-19	EBR
H.013830	NHPP	88,862.10	Engineering	EBR SIGNAL DETECTION UPGRADE	Preliminary Engineering	8-Apr-19	EBR
H.013867	NHPP	792,341.00	Construction	I-10 WB: LA 415 EXIT RAMP IMPROVEMENTS	4R Reconstruction, Added Capacity	8-Apr-19	WBR
H.010869	RTP	142,390.95	Construction	WARDS CREEK TRAIL - BLUEBONNET EXTENSION	Other	24-Apr-19	EBR
H.010869	RTP	119,594.75	Construction	WARDS CREEK TRAIL - BLUEBONNET EXTENSION	Other	24-Apr-19	EBR
H.011261	HSIPPEN	3,666,599.48	Construction	LA427: S.ACADIAN THRUWAY, I-10-LA73 (BR)	4R Resurfacing	26-Apr-19	EBR
H.013837	NHPP	350,610.00	Engineering	GRADE RAISING ON VALLEY ST	Preliminary Engineering	26-Apr-19	EBR
H.013837	NHPP	1,431,489.21	Engineering	GRADE RAISING ON VALLEY ST	Debt Service	26-Apr-19	EBR
H.013837	NHPP	19,252.00	Engineering	GRADE RAISING ON VALLEY ST	Preliminary Engineering	26-Apr-19	EBR
H.013837	NHPP	12,953.00	Engineering	GRADE RAISING ON VALLEY ST	Preliminary Engineering	26-Apr-19	EBR
H.013320	NHPP	3,868,118.77	Construction	LA 42: GARDERE LANE - LA 30 (RT II)	4R Restoration and Rehabilitation	30-Apr-19	EBR
H.013751	HSIPPEN	3,763.21	Feasibility	DOWNTOWN GREENWAY LA CONNECTOR (BR)	Planning	30-Apr-19	EBR
H.013042	RTP	125,092.00	Construction	LSU AGCENTER RESTORATION TRAILS	Other	1-May-19	EBR
H.012057	STP FLEX	26,334.31	Engineering	LA 431: VILLAR CANAL AND DRAINAGE BRIDGES	Preliminary Engineering	6-May-19	ASC
H.012057	RCAF	5,094.91	Engineering	LA 431: VILLAR CANAL AND DRAINAGE BRIDGES	Preliminary Engineering	6-May-19	ASC
H.012057	STP FLEX	51,607.45	Engineering	LA 431: VILLAR CANAL AND DRAINAGE BRIDGES	Preliminary Engineering	6-May-19	ASC
H.011278	HSIP	5,278,967.47	Construction	I-12: MEDIAN CABLE BARRIER	Safety	14-May-19	LIV
H.012902	STP FLEX	1,057,144.92	Construction	LA 327: S. RIVER RD- LA 30	4R Restoration and Rehabilitation	14-May-19	EBR
H.013331	NHPP	3,782,257.64	Construction	LA 427: LA 3064 - ACADIAN THRUWAY (RT II)	4R Restoration and Rehabilitation	14-May-19	EBR
H.012232	STP>200K	3,150,000.00	ROW	LA 3064 TO LA 1248 PHASE 2	Right of Way	6-Jun-19	EBR
H.011825	STP>200K	1,944,067.49	Construction	BUDDY ELLIS ROAD IMPROVEMENTS	4R Resurfacing	10-Jun-19	LIV

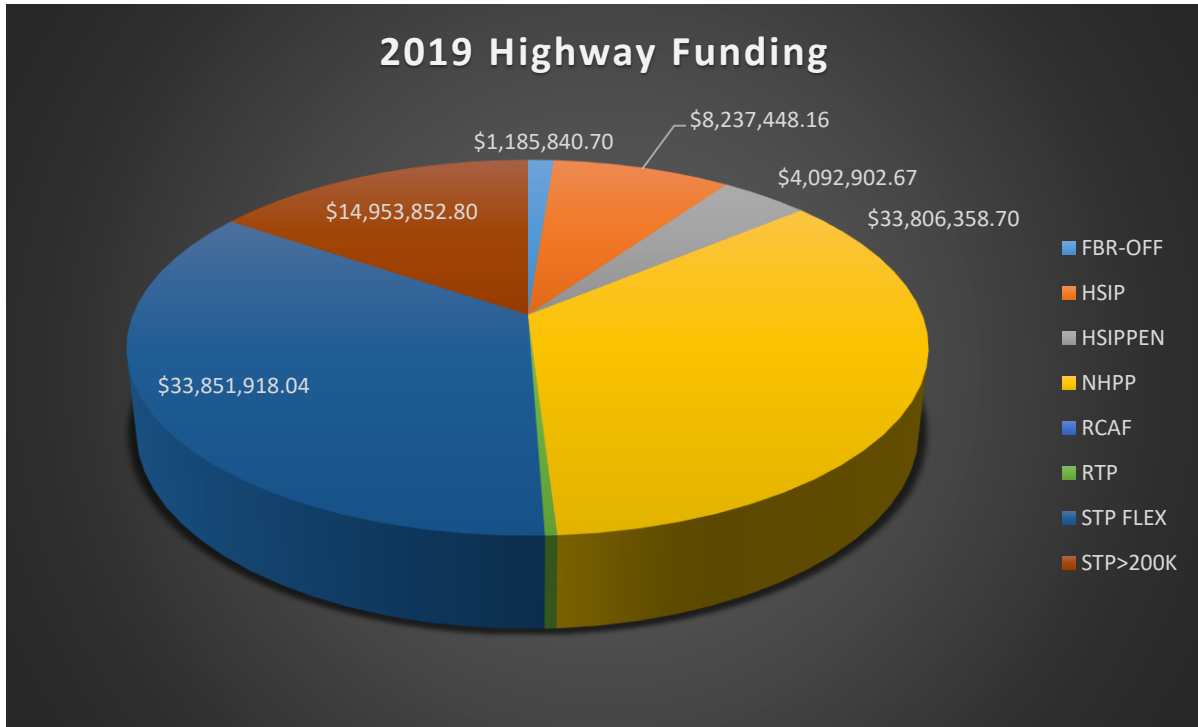
Capital Region Planning Commission  
ANNUAL LISTING OF FEDERALLY OBLIGATED PROJECTS

H.011825	STP FLEX	2,280,439.68	Construction	BUDDY ELLIS ROAD IMPROVEMENTS	4R Resurfacing	10-Jun-19	LIV
H.010565	STP FLEX	1,037,528.46	Construction	ACADIAN STREET PUMPING STATION (underpass)	Other	13-Jun-19	EBR
H.011827	STP>200K	3,960,867.86	Construction	DUNN ROAD IMPROVEMENTS	4R Resurfacing	11-Jul-19	LIV
H.011645	HSIP	240,893.61	Engineering	LA 3002: ACCESS MANAGEMENT	Preliminary Engineering	22-Jul-19	LIV
H.011824	STP FLEX	37,982.75	Utilities	LA 1026: ROUNDABOUT AT BUDDY ELLIS RD	Utilities	28-Aug-19	LIV
H.013261	NHPP	270,332.00	Engineering	I-110 ITS DEPLOYMENT	Preliminary Engineering	28-Aug-19	EBR
H.011842	STP>200K	4,925,021.28	Construction	CHOCTAW DRIVE PAVEMENT PRESERVATION	4R Restoration and Rehabilitation	29-Aug-19	EBR
H.002375	STP FLEX	23,215,028.04	Construction	AMITE R.BR. NEAR FRENCH SETTLEMENT	Bridge Replacement, No Added Capacity	5-Sep-19	ASC, LIV
H.013531	STP>200K	645,939.17	Construction	PEAK LANE IMPROVEMENTS	4R Restoration and Rehabilitation	5-Sep-19	LIV
H.013621	HSIPPEN	2,688.01	Feasibility	LRSP SIGNS, STRIPING & X-OVERS(GONZALES)	Planning	10-Sep-19	ASC
H.013158	STP>200K	327,957.00	Construction	LINDER ROAD BRIDGE REPLACEMENT	Special Bridge	16-Sep-19	LIV
	<b>TOTAL</b>	<b>\$96,520,493.68</b>					

**Table 2. Breakdown of Obligations Amounts among Funding Sources**

Funding Source	Federal Funds Amount	Total
FBR-OFF	\$948,672.56	\$1,185,840.70
HSIP	\$8,108,185.53	\$8,237,448.16
HSIPPEN	\$3,673,050.70	\$4,092,902.67
NHPP	\$25,959,082.78	\$33,806,358.70
RCAF	\$4,075.93	\$5,094.91
RTP	\$186,687.76	\$387,077.70
STP FLEX	\$27,089,130.99	\$33,851,918.04
STP>200K	\$12,113,177.61	\$14,953,852.80
<b>Grand Total</b>	<b>\$78,082,063.86</b>	<b>\$96,520,493.68</b>

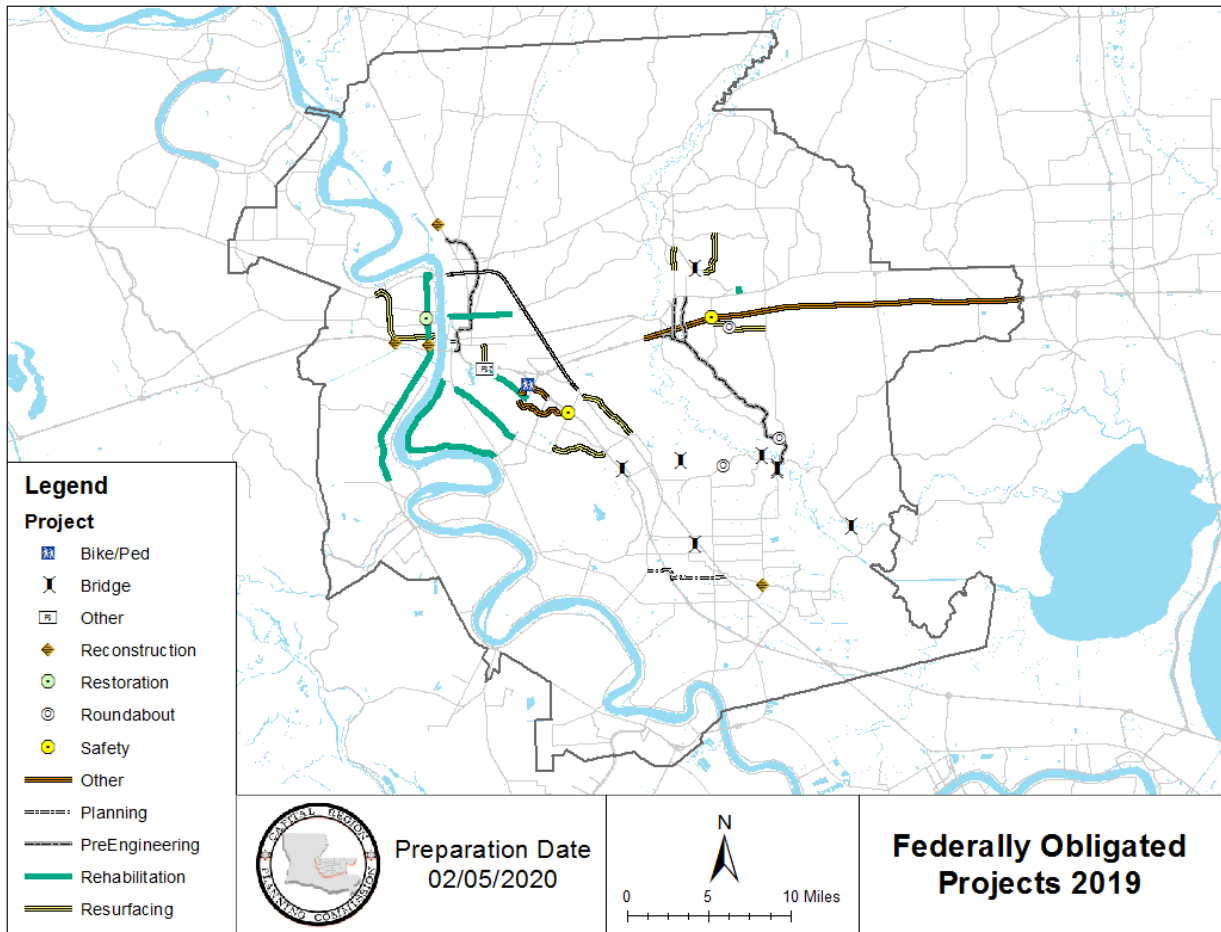
Since there are a large amount of funding sources for the highway projects, Table 2 provides a listing of the project funding sources and amount, so the distribution of funds could be easier understood.



**Figure 3. FY 2019 Federally Obligated Highway/Bridge Projects by Funding Category**

Figure 3 shows the distribution of funds between various funding sources for the highway projects with the largest percentage of highway/bridge funds (33% total) obligated to NHPP funding. These funds are used within the metropolitan area to fund roadway reconstruction, rehabilitation, traffic operational improvements, bicycle and pedestrian facilities, and studies

Capital Region Planning Commission  
ANNUAL LISTING OF FEDERALLY OBLIGATED PROJECTS



**Figure 4. Maps of Projects throughout the CRMPO Boundaries**

Along with the tables for the highway projects, Figure 4, a map of the highways projects is also provided to display the locations of the projects within the Capital Regions. Also provided in Appendix A, are individual maps to offer a closer look at the location of each project.

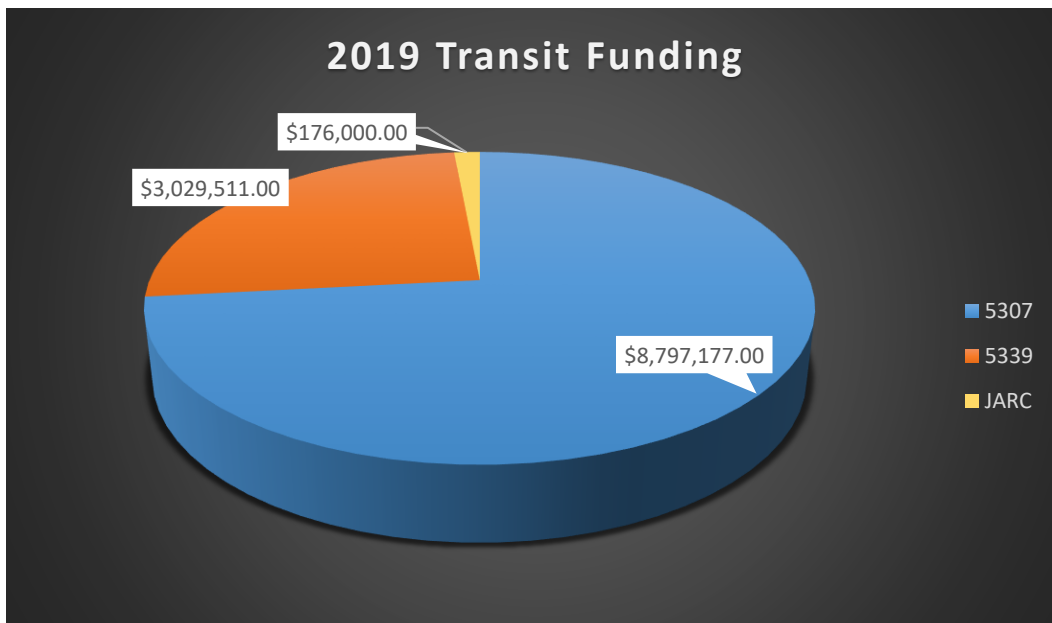
Capital Region Planning Commission  
ANNUAL LISTING OF FEDERALLY OBLIGATED PROJECTS

**Table 3. Listing of Transit Projects**

Echo	Date	Description	100% amount	Fund
19-1	30-Nov-18	CRPC--CRPC paid local match--100%	60,311.00	5307
19-2	3-Dec-18	Planning salaries--80/20	50,767.00	5307
19-3	10-Dec-18	Preventive maintenance--80/20	338,168.00	5307
19-4	10-Dec-18	Preventive maintenance--80/20	506,215.00	5307
19-5	15-Jan-19	Vans--85/15	15,207.00	5307
19-7	15-Jan-19	Vans--85/15	60,000.00	5339
19-6	15-Jan-19	Vans--85/15	86,086.00	5339
19-8	1-Feb-19	PM	546,067.00	5307
19-9	1-Feb-19	Gillig	544,113.00	5339
19-10	1-Feb-19	Gillig--we had \$96,562 remaining to draw down and we drew it down on echo 19-12	94,359.00	5339
19-11	1-Feb-19	Bus lease	22,213.00	5339
19-12	25-Feb-19	Gillig	2,301,664.00	5339
19-13	18-Mar-19	Bus lease December 2018	256,703.00	5339
19-14	16-May-19	PM thru June 2019	2,907,950.00	5307
19-15	16-May-19	Vans--85/15	45,679.00	5307
19-16	16-May-19	Vans--85/15	8,086.00	5307
19-17	16-May-19	Security draw down	24,623.00	5307
19-18	16-Aug-19	Bus lease June 2019	278,916.00	5339
19-19	16-Aug-19	Preventive maintenance--80/20	382,050.00	5307
19-20	20-Aug-19	Electric Buses--ADVANCE DRAW--PAID BYD ON 8/26/2019	1,011,017.00	5339
19-21	20-Aug-19	Electric buses (this is a CMAQ grant that is only 80/20--PAID BYD ON 8/26/2019	885,442.00	5339

Capital Region Planning Commission  
ANNUAL LISTING OF FEDERALLY OBLIGATED PROJECTS

19-22	21-Aug-19	JARC - closeout	131,085.00	JARC
19-23	23-Aug-19	CRPC - thru June 2019		5307
19-24	23-Aug-19	CRPC - thru June 2019	104,900.00	5307
19-25	23-Sep-19	PM through August 2019	1,101,844.00	5307
19-26	23-Sep-19	CRPC through July 2019	7,140.00	5307
19-27	23-Sep-19	Planning funds to City of BR	176,000.00	5307
19-28	24-Sep-19	Bus washer payment	80,706.00	5307
<b>TOTAL</b>			<b>\$12,027,311.00</b>	



**Figure 5. FY 2019 Federally Obligated Transit Projects by FTA Funding Category**

Figure 5 summarizes the funding for the transit projects sorted by funding source. Majority of the transit funding comes from FTA Sections 5307 and 5339. These funds are used for capital, operating assistance, preventive maintenance and planning purposes for mass transportation improvements in urbanized areas.