

The preparation of this report was financed in part with funding from United States Department of Transportation (USDOT) and administered by the Louisiana Department of Transportation and Development (LADOTD). The opinions, findings, and conclusions expressed in this publication are those of the authors and not necessarily those of USDOT, and LADOTD.

Project Numbers

H.972462.1

PL80-17-22

H.013502

H.012730

Unified Planning Work Program

(July 1, 2022 - June 30, 2023)

UPWP FY 2023

Adopted (06/08/2022)



14734 S. Harrell's Ferry Rd., Ste. #B

Baton Rouge, LA 70816

Ph: (225) 383 5203, Email: Info@crpcla.org

www.crpcla.org



Table of Contents

Record of Adoption, Amendments, & Modifications	4
1 Introduction	5
2 Planning Area	17
Organization and Management.....	19
Task A-1: Citizen Participation and Public Outreach	25
Task A-2: Congestion Management Process	31
Task A-3: Coordinated Public Transit Human Services	35
Task A-4: Performance Based Planning and Programming.....	38
Task A-5: Non-motorized Planning and Complete Streets.....	43
Task A-6: Air Quality Planning	47
Task A-7: Intelligent Transportation System (ITS)	51
Task A-8: ADA and Title VI Planning	54
Task A-9: Model Enhancement.....	59
Task A-10: Safety and Security Planning.....	63
Task A11: Development of Transportation Plans & Programs.....	66
Task A12: Multi-Modal Freight Transportation.....	70
Task A13: Data Development and Maintenance.....	75
Task B1: Land Use, Socio-Economic and Environmental	79
Task B2: Transportation System - Inventory & Performance Monitoring	83
Task C1: Transportation Plan Reappraisal	86
Task D3: Technical Assistance (Highway).....	89
Task D4: Technical Assistance (Public Transit)	93

Task G1: Administration (Hwy) 97

Task G2: Administration (Transit)..... 98

Task H1: Travel Demand Management (TDM) 99

Task H3: Regional SHSP Implementation..... 102

Task SP-2: Regional Bike/Pedestrian Plan..... 110

Appendices

Appendix A – TPC UPWP Approval Minutes

Appendix B – Staff Positions Percentage of Time per Task (FY 2023)

Appendix C – Performance and Expenditure Report Summary (FY 2022)

Unified Planning Work Program 2023

Record of Adoption, Amendments, & Modifications

Date	Action Taken	Comment
3/23/2022	Joint TAC/TPC	Review of Draft UPWP FY 2022-2023
6/08/2022	TPC Adoption	UPWP FY 2022-2023, Adopted as recommended by Staff and TAC.

1 Introduction

Federal legislation requires that cities with a population of over 50,000 form a Metropolitan Planning Organization or MPO, and federal agencies serve to fund the planning process. The MPO is a transportation policy-making organization made up of representatives from local government and transportation authorities to carry out transportation planning with coordination with the state and with operators of publicly owned transit services. MPOs were created to ensure that expenditures for transportation projects and programs were based on a continuing, cooperative, and comprehensive (3-C) planning process.

The Capital Region Planning Commission (CRPC) is the Baton Rouge area's designated Metropolitan Planning Organization (MPO). Capital Region MPO (CRMPO) is also designated as a Transportation Management Area (TMA) since the urbanized area population is over 200,000. The following are eight core functions of the CRMPO:

1. Establish a setting for effective decision making

Establish and manage a fair and impartial setting for effective regional decision making in the metropolitan area.

2. Identify and evaluate transportation improvement options

Develop a Unified Planning Work Program (UPWP) that identifies and evaluates transportation improvement options to support the planning factors and performance-based planning specified in the latest approved transportation law FAST Act.

3. Prepare and maintain a Metropolitan Transportation Plan (MTP)

Develop and update an MTP for the Capital Region metropolitan area covering a planning horizon of at least 20 years using performance measures and targets.

4. Develop a Transportation Improvement Program (TIP)

Develop a short-range, four-year program of priority transportation improvements drawn from the long-range transportation plan. The MPO creates the TIP with spending, regulating, operating, management, and financial tools. The TIP represents immediate priority actions to achieve the area's goals and associated system performance targets.

5. Identify performance measure targets and monitor whether implemented projects are achieving targets

Coordinate with state and public transportation operators to establish performance targets that address performance measures, as set forth in Federal law, related to surface transportation and public transportation.

6. Involve the public

Involve the general public and other affected constituencies related to the essential decision-making elements listed above.

7. Demonstrate Transportation Conformity or Conform to State's air quality plan

Coordinate with air quality interagency partners such as Federal Highway Administration (FHWA), Federal Transit Administration (FTA), Environmental Protection Agency (EPA), Louisiana Department of Transportation and Development (LADOTD), and Louisiana Department of Environmental Quality (LDEQ) to demonstrate that transportation projects and plans conform to the State's air quality plan.

8. Maintain the Congestion Management Process (CMP)

Maintain a congestion management process (CMP) that identifies actions and strategies for reducing congestion and increasing mobility. Projects and strategies from the CMP are considered for inclusion in the MTP and TIP.

What is the UPWP?

The UPWP describes the transportation planning activities or work tasks that the CRMPO proposes to undertake during the State of Louisiana's fiscal year (FY 2023 from July 1, 2022, to June 30, 2023). It serves to document the proposed expenditures of federal, state, and local transportation planning funds, and provides a management tool for CRPC in scheduling major transportation planning activities, milestones, and products. This activity is required under the Fixing America's Transportation System Act (FAST Act), a federal law initially adopted in 1962 defining the responsibilities of an MPO. Each of the work tasks proposed in the UPWP will include the following details:

- What is the objective of a particular work task?
- What were the previous accomplishments related to that task?
- What will the staff be working on in the upcoming year?
- What are the performance measures of this task?
- What are the general results/products from this task?
- What is the proposed budget for this task?

How is the UPWP Developed?

The UPWP serves as the document for identifying ways to carry out the continuing, cooperative, and comprehensive transportation planning process in the Capital Region MPO area (CRMPO). An MPO is required to perform all planning tasks set forth in federal laws and regulations, many of which are conducted annually. However, some tasks require more than one year to complete and are carried forward from one UPWP to the next. To effectively identify all work tasks, CRPC prepares this UPWP with input from federal, state, and local jurisdictions and transportation providers in the CRMPO region.

Unified Planning Work Program 2023

This year's work program represents a continuation of the strategic planning process that begun with last year's work program. The focus of the UPWP continues to be on maintaining, improving, and utilizing the information resources collected by the MPO in the day-to-day transportation decision-making process. It will continue to address the eight planning factors identified in SAFETEA-LU, MAP-21, the FAST Act and IIJA that must be considered by MPOs in developing transportation plans and programs. All these factors are outlined below:

1. Support the economic vitality of the metropolitan area, especially by enabling global competitiveness, productivity, and efficiency.
2. Increase the safety of the transportation system for motorized and non-motorized users.
3. Increase the security of the transportation system for motorized and non-motorized users.
4. Increase the accessibility and mobility of people and for freight.
5. Protect and enhance the environment, promote energy conservation, improve the quality of life, and promote consistency between transportation improvements and state and local planned growth and economic development patterns.
6. Enhance the integration and connectivity of the transportation system, across and between modes, for people and freight.
7. Promote efficient system management and operation.
8. Emphasize the preservation of the existing transportation system.
9. Improve the resiliency and reliability of the transportation system.
10. Reduce or mitigate storm water impacts of surface transportation; and
11. Enhance travel and tourism

Table 1 summarizes the correlation between the above planning factors and the proposed work tasks. Emphasis will be given to FAST Act and IIJA Implementation: Transition to performance-based planning and programming and Ladders of Opportunity: Access to essential services - as part of the transportation planning, identify transportation connectivity gaps in access to essential services. The work tasks programmed in the UPWP also address the national goals introduced under MAP-21 in the following seven areas:

- Safety,
- Infrastructure Condition,
- Congestion Reduction,
- System Reliability,
- Freight Movement and Economic Vitality,
- Environmental Sustainability; and,
- Reduced Project Deliver Delays.

To achieve these goals, MAP-21 and the FAST Act emphasize a streamlined, performance-based, and multi-modal approach to transportation planning and project implementation. CRPC will work with the Louisiana Department of Transportation and Development (LADOTD), local policy makers, and

stakeholders to establish local targets that will help achieve performance measures both at the local and national level.

How is the UPWP Funded?

The UPWP is partially funded with federal transportation planning funds from the Federal Highway Administration (FHWA) and Federal Transit Administration (FTA). The federal funds require a non-federal match.

A detailed funding breakdown by UPWP task and funding source is shown in **Table 2**. The UPWP must be approved by CRPC's Transportation Policy Committee (TPC) and submitted to FHWA and FTA for approval. If priorities change or additional funds become available, the UPWP will be amended during the fiscal year.

UPWP FY 2023 Overview

This section provides a quick overview of all the various tasks programmed in the current work program.

- **Task A1 (Citizen Participation and Public Outreach)** – The purpose of this task is to address the CRPC's public participation plan that calls for reasonable opportunities for interested parties and general public to comment on the Metropolitan Transportation Planning Processes as required by FAST Act and previous legislations.
- **Task A2 (Congestion Management Process)** – The purpose of this task is to use a systemic approach collaboratively developed and implemented throughout the CRMPO region to ensure safe and effective "Management and Operations" of new and existing transportation facilities using demand reduction and operational management strategies.

Unified Planning Work Program 2023

Table 1. UPWP Tasks and Relation to Planning Factors

Planning Factors	UPWP Task Codes																				
	A-1	A-2	A-3	A-4	A-5	A-6	A-7	A-8	A-9	A-10	A-11	A-12	A-13	B-1	B-2	C-1	D-3	D-4	H-1	H-3	SP-1
Support the economic vitality of the Urbanized Area	X	X		X			X	X		X	X	X		X		X	X	X	X		X
Increase safety of the transportation system for motorized and non-motorized users	X	X		X	X		X	X		X	X			X	X	X	X	X		X	
Increase security of the transportation system	X	X		X			X	X		X	X			X	X	X	X	X			
Increase accessibility and mobility options for people and freight	X	X	X	X			X	X		X	X	X			X		X	X	X		X
Protect and enhance the environment, and improve quality of life	X	X	X	X	X	X	X	X	X	X	X			X	X		X	X	X	X	X
Enhance integration and connectivity of the transportation system, across modes, for people and freight	X	X	X	X	X		X	X		X	X	X	X		X	X	X	X	X		X
Promote efficient system management and operation	X	X	X	X		X	X	X	X	X	X		X	X	X	X	X	X	X	X	
Emphasize preservation of the existing transportation system	X	X	X	X		X	X			X	X		X	X		X			X		
Improve the resiliency and reliability of the transportation system		X					X				X	X				X					X
Reduce or mitigate storm water impacts of surface transportation				X							X					X					
Enhance travel and tourism						X					X					X					X
FAST Act Implementation / Performance Based Planning	X	X	X	X		X	X	X	X	X	X	X	X	X	X	X	X	X	X	X	
Ladders of Opportunity	X	X	X					X			X		X			X					X

Unified Planning Work Program 2023

Table 2. FY 2023 UPWP Tasks by Funding Sources

Task Code	Task Name	Total Funds	FHWA PL	SPR	CATS PL	FTA 5303, 5310, 5311	FTA Carry Over	DEMO STIC	HISPPEN	STP>200K	Local Match
Task A-1	Citizen Participation and Public Outreach	91,600	73,280								18,320
Task A-2	Congestion Management (Hwy)	68,620	54,896								13,724
Task A-4	Performance Based Planning and Programming	140,640	112,512								28,128
Task A-5	Bicycle/Pedestrian Planning	77,360	61,888								15,472
Task A-6	Air Quality / Environmental Planning	38,935	31,148								7,787
Task A-7	Regional ITS Architecture	53,140	42,512								10,628
Task A-8	Title VI Planning	38,625	30,900								7,725
Task A-9	Model Enhancement	1,640	1,312								328
Task A-10	Safety and Security Planning	48,885	39,108								9,777
Task A-11	Transportation Plans & Programs	326,700	261,360								65,340
Task A-12	Multi-Modal Freight Transportation	208,080	166,464								41,616
Task A-13	Data Base Mapping	205,850	164,680								41,170
Task B-1	Land Use and S-E-E	147,040	117,632								29,408
Task B-2	Inventory and Performance Monitoring	181,340	145,072								36,268
Task C-1	Plan Reappraisal (Hwy)	24,885	19,908								4,977
Task D-3	Technical Assistance (Hwy)	73,010	58,408								14,602
Task G-1	Administration (Hwy)	38,376	30,700								7,675
Planning Total		1,764,728	1,411,782	0	0	0	0	0	0	0	352,946
Task A-3	Coordinated Human Services Transportation Plan	50,000				43,000	0				7,000
Task D-4	Technical Assistance (Transit)	420,550			50,000	148,367	149,641				74,502
Task G-2	Administration (Transit)	31,474				21,111	2,500				5,903
Transit Total		502,024	0	0	50,000	212,478	152,141	0	0	0	87,405
Task H-1	Travel Demand Management/Rideshare	665,000									665,000
Task H-3	Regional Strategic Highway Safety Plan Implementation	303,618							303,618		0
Task SP-2	Regional Bike/Pedestrian Plan	48,000								38,400	9,600
Other Total		1,016,618	0	0	0	0	0	0	303,618	38,400	674,600
Grand Total		3,283,370	1,411,782	0	50,000	212,478	152,141	0	303,618	38,400	1,114,950

- **Task A3 (Coordinated Public Transit Human Services)** - The purpose of this task is to address the Coordinated Public Transit Human Services Transportation Plan as required by the FAST Act and foster coordination and communication among all the transit providers in the region. Staff will continue quarterly meetings with the human services agencies that provide transportation services in the Capital Region to collect information on transportation services, provide opportunities for training and coordination, and maintain the regional Coordinated Human Services Transportation Plan (CHSTP).
- **Task A4 (Performance-Based Planning and Programming)** - The purpose of this task is to address periodic reviews, changes, and progress on the short-range planning process and changes to the UPWP as required by the FAST Act and previous legislations. CRPC will continue to conduct short range transportation and transportation-related planning activities and coordinate with necessary agencies to track implementation of transportation projects in the CRMPO region. **(eTIP)**
- **Task A5 (Non-Motorized Planning and Complete Streets)** - The purpose of this task is to develop, support and promote plans and projects that increase and improve cycling and walking facilities, improve safety and security of vulnerable roadway users, and create alternative transportation mode choices for all travelers. CRPC will continue to prepare and evaluate transportation plans so that bicycle and pedestrian facilities are integrated into the network wherever practicable.
- **Task A6 (Air Quality Planning)** - The purpose of this task is to protect and enhance the environment and promote consistency between transportation improvements and state and local planned growth and economic development patterns. CRPC will continue to monitor the transportation planning activities to ensure that such activities do not deteriorate the air quality in the five-parish air quality maintenance area.
- **Task A7 (Intelligent Transportation System)** - The purpose of this task is to develop, maintain and enhance regional Intelligent Transportation System (ITS) activities to improve efficiency of the transportation network, public transit, emergency response, safety, and security in the Capital Region. CRPC will continue to update and maintain the regional ITS architecture and coordinate with various stakeholders to ensure that ITS technologies are deployed in a manner that will allow for communication, interoperability, and compatibility amongst various regional systems and entities.
- **Task A8 (Title VI Planning)** - The purpose of this task is to ensure that no person will, on the grounds of race, color, national origin, income, gender, age, and disability, as provided by Title VI of the Civil Rights Act of 1964 and the Civil Rights Restoration Act of 1987 (PL 100.259), be excluded from participation in, be denied the benefits of, or be otherwise subjected to discrimination under any program or activity.
- **Task A9 (Model Enhancement)** - The purpose of this task is to continue reviewing and analyzing existing travel demand and air quality models to determine feasible enhancements to the modeling

procedures that are used in the CRMPO study area. CRPC will continue to perform air quality, regional travel demand, and micro simulation model runs for existing and future projects as requested and needed.

○ **Task A10 (Safety and Security Planning)** - The purpose of this task is to reduce the human and economic toll on the region's multi-modal transportation system due to traffic crashes through widespread collaboration and an integrated 4E (Engineering, Enforcement, Education and Emergency Response) approach. CRPC will continue to analyze safety data and collaborate with regional safety stakeholders to keep them engaged in routinely monitoring safety programs and refining the planning process.

○ **Task A11 (Development of Trans. Plans and Programs)** - The purpose of this task is to evaluate, support, analyze and implement multi-modal transportation plans and programs that foster accessibility, mobility, safety, and other FAST Act planning factors. CRPC will continue to coordinate with local governments and various transportation stakeholders to develop and promote innovative programs that will foster better multi-modal transportation options for all users.

○ **Task A12 (Multi-Modal Freight Transportation)** - The purpose of this task is to study regional freight related issues and better link freight movement with regional economic development strategies as outlined in the Economic Development Administration (EDA) Comprehensive Economic Development Strategy (CEDS). This task includes evaluating, supporting, analyzing, and implementing multi-modal transportation plans and programs that foster accessibility, mobility, safety, and other FAST Act planning factors.

○ **Task A13 (Data Development and Maintenance)** - The purpose of this task is to collect, maintain and analyze regional information on all topics including but not limited to, census, land use and related data that will be needed for regional demographic forecasting, transportation planning, land use planning, air quality planning, emergency planning, Title VI, and economic development efforts.

○ **Task B1 (Land Use, Socio-Economic, Environmental)** - The purpose of this task is to collect, maintain and analyze local and regional land use, socio-economic and environmental data that will be used in regional demographic forecasting, transportation planning, land use planning, air quality planning, emergency planning, Title VI, and economic development efforts. CRPC will continue to participate, provide input to parishes and larger municipalities in the development of local comprehensive plans, and provide guidance to smaller municipalities on land use and zoning issues.

○ **Task B2 (Transportation System – Inventory & Performance Monitoring)** - The purpose of this task is to collect, maintain and analyze street inventory maintenance data to improve safety, reliability, efficiency, and extend the life of the transportation system in the Capital region.

Unified Planning Work Program 2023

- **Task C1 (Transportation Plan Reappraisal)** - This task addresses periodic reviews, changes, and progress on the long-range planning process to foster livable and sustainable communities and transportation systems in the CRMPO area as required by the FAST Act and previous legislations.
- **Task D3 (Technical Assistance (Highway))** - The purpose of this task is to utilize the expertise and knowledge of the CRPC and LADOTD staff in providing technical support services to local governments and interested citizens on transportation planning and other requests that support the planning factors in FAST Act and the previous legislation.
- **Task D4 (Technical Assistance (Transit))** - The purpose of this task is to provide technical assistance to public transit providers and local units of government to create a regionally seamless transit system that improves accessibility and mobility for all citizens.
- **Task G1 (Grant Administration (Hwy))** - The purpose of this task is to provide administration of the UPWP tasks funded by FHWA Planning Funds (PL).
- **Task G2 (Grant Administration (Transit))** - The purpose of this task is to provide administration of the UPWP tasks funded by Federal Transit Administration (FTA) funds.
- **Task H1 (Travel Demand Management)** - The purpose of this task is to implement Travel Demand Management (TDM) strategies to influence individual travel behavior and provide expanded options to reduce the actual demand, or number of vehicles, placed on transportation facilities and incorporate practices that focus on managing the demand side of the transportation equation rather than increasing supply by widening or building new roads.
- **Task H3 (Regional SHSP Implementation)** - The purpose of this task is to reduce traffic fatalities and injuries on Capital Regional Transportation Safety Coalition (CRTSC) roadways through widespread collaboration and an integrated 4E approach: engineering, education, enforcement, and emergency services. CRPC will continue to coordinate with the 4E stakeholders and implement action items in the Capital Region Transportation Safety Plan (CRTSP) to achieve the goal of reducing the number of fatalities in CRTSC region by half by the year 2030 and the vision of Destination Zero Deaths.
- **Task SP-1 (Regional Freight Profile)** - The purpose of this task is to develop a freight profile attuned to the current and anticipated demand for freight movement with a focus on supply chain and logistics. The goal of the Freight Profile is to set forth a vision to develop a well-balanced transportation system that promotes futuristic supply chain networks and logistics to enhance economic development and excellent quality of life in the BRMPO area

UPWP FY 22 Vs. FY 23

Figure 1 shows a comparison of funding breakdown by UPWP task in FY 2022 and 2023. Most of the tasks/projects are similar between the two fiscal years. The following information can be observed from the chart.

Overall funding has decreased (by 17.9%): The total funding available to perform UPWP tasks decreased in FY 2023. This is because of completion of major planning undertakings like MTP MOVE 2046, Pavement and Asset Data Collection and EDC-5 Value Capture.

Increased allocation for Tasks A1, A3, A8, A11 A13, B1 and D4:

- The increase in allocation for A1 coincides with the additional effort and time staff anticipate investing in public outreach through visualization/graphic techniques on completion of various planning initiatives.
- The increase in funding allocation for A3 is to further develop Mobility Management for all five MPO Parishes.
- The increase in funding allocation for A8 is to develop area specific Title VI analysis and provide linkage to current project selection as well as develop equity-based planning.
- The increase in funding allocation for A11 is to develop and maintain Decision Lens software for TIP. In addition, staff anticipate developing Planning grants tailored to specific needs of local member jurisdictions.
- The increase in funding allocation for A13 is to develop, maintain and analyze various datasets, especially Fugro pavement and asset data, building permit data, utility data, environmental data etc.
- The increase in funding allocation for B1 is to implement/incorporate current best practices in land use growth management, scenario planning and fiscal impact analysis for all transportation planning work.
- The increase in funding allocation for D4 is to develop multi-modal transportation solutions with transit as the drivetrain and corridor analysis for transit compatibility in lieu of anticipated IJA Transit related funding allocation.

Decreased allocation for Tasks A2, A5, A6, A7, A9, A10, A12, D3, SP1, SP2, SP3, and SP4

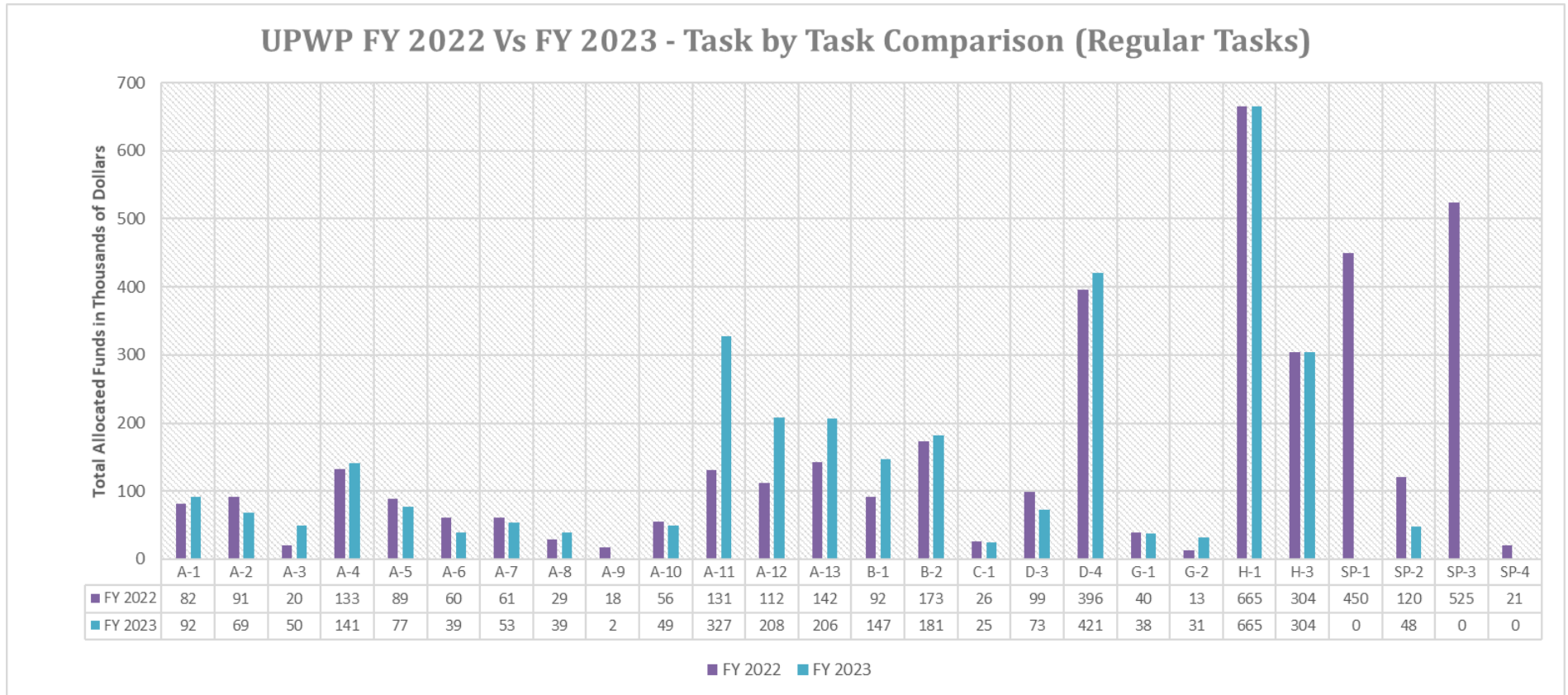
- CRPC completed the CMP as part of the MOVE 2046 and developed PM #3 in FY 2022. (Task A2).
- CRPC will wrap up the Regional Bicycle and Pedestrian Plan (by December 2022) and will only focus on implementation and funding identification. (Task A5)
- CRPC completed the Air Quality Conformity Analysis/Determination as part of MTP MOVE 2046 and anticipates focus on alternative fuel corridors, EV charging etc. (Task A6)

Unified Planning Work Program 2023

- CRPC completed regional ITS priorities as part of the MTP MOVE 0246 and will focus on implementation of Regional TSMO. (Task A7)
- CRPC completed overhaul of Regional Travel Demand Model from a gravity-based model to a modified tour-based model as part of the MTP MOVE 2046. (Task A9)
- CRPC completed the EBR LRSP and anticipates working on implementation of EBR LRSP and development of Livingston LRSP. (Task A10)
- CRPC will develop a freight profile as a separate task under SP-1. (Task A-12)
- CRPC will continue working with member jurisdictions on upcoming planning grants under PL A-11. (Task D3)
- CRPC wrapped up major planning undertakings such as MTP MOVE 2046, PADC, EDC-5 SCTC and RBPP (75%) etc. In addition, CRPC initiate work on developing a Regional Freight Transportation Plan for the BR metropolitan area focusing on supply chain/logistics (Task SP-1, SP2, SP3, SP4)

Unified Planning Work Program 2023

Figure 1. UPWP FY 22 Vs. FY 23 Funding Breakdown



2 Planning Area

The CRMPO study area shown in **Figure 2** is based on the 2010 census urbanized area boundaries. It is comprised of Ascension, East Baton Rouge and portions of Iberville, Livingston, and West Baton Rouge Parishes. The urbanized planning area and the study area boundaries were adjusted based on the 2010 U.S. Census boundaries. By federal definition, CRMPO's planning/study area must at least include the 2010 urbanized area (as defined by the U.S. Bureau of the Census) and the contiguous area that may reasonably be expected to become urbanized in the next 20 years. Within the study area lies the municipalities of Addis, Baker, Baton Rouge, Brusly, Central, Denham Springs, Donaldsonville, French Settlement, Gonzales, Livingston, Plaquemine, Port Allen, Port Vincent, Sorrento, St. Gabriel, Walker, White Castle, and Zachary.

The EPA designated the entire five parish CRMPO area as maintenance for ozone based on the 2008 8-hr standard of 75 ppb. So, planning activities in the UPWP that address the air quality issues can be carried out in the entire five parish area.

Based on official census 2010 data, the five-parish area saw an increase in population from 636,214 in 2000 to over 732,587 in 2010.

Table 5. Population Change in Five Parish Baton Rouge Non-Attainment Area

Parish	CENSUS POPULATION			DECADAL PERCENTAGE CHANGE	
	2020	2010	2000	2010 Vs 2020	2000 Vs 2010
Ascension	126,500	107,215	76,627	15.25	39.92
East Baton Rouge	456,781	440,171	412,852	3.64	6.62
Iberville	30,241	33,387	33,320	-10.40	0.20
Livingston	142,282	128,026	91,814	10.02	39.44
West Baton Rouge	27,199	23,788	21,601	12.54	10.12
Total	783,003	732,587	636,214	6.44%	15.15%

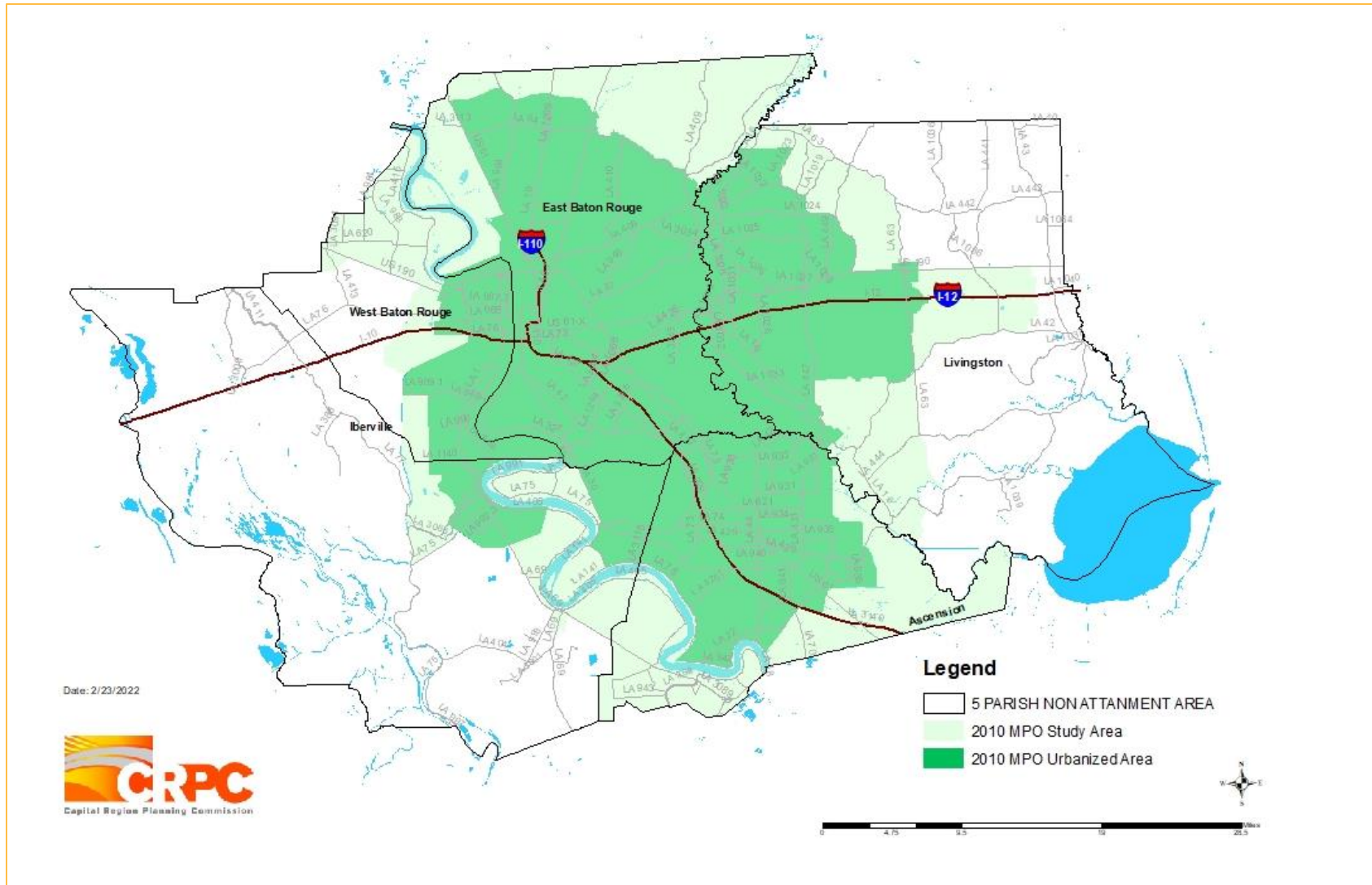


Figure 2. Capital Region Metropolitan Planning Area

Organization and Management

Committee Oversight

The Transportation Policy Committee (TPC) provides policy direction for CRMPO. The TPC consists of the following membership:

1. The chief elected official or designee from each of the local governments (parishes and municipalities) within the Baton Rouge Transportation Management Area or the smoothed urbanized area. This includes the following:

Ascension Parish	President
City of Gonzales	Mayor
Town of Sorrento	Mayor
East Baton Rouge Parish	Mayor-President
City of Baker	Mayor
City of Central	Mayor
City of Zachary	Mayor
Iberville Parish	President
City of Plaquemine	Mayor
City of St. Gabriel	Mayor
Livingston Parish	President
City of Denham Springs	Mayor
City of Walker	Mayor
Town of Livingston	Mayor
Village of Port Vincent	Mayor

Planning Work Program 2023

West Baton Rouge Parish	President
City of Port Allen	Mayor
Town of Addis	Mayor
Town of Brusly	Mayor

2. The Administrator (or designee) from the State District Office of the Federal Highway and Federal Transit Administration if applicable. (Currently no state office of the Federal Transit Administration exists.) This member shall be a non-voting member.

3. The Secretary (or his or her designee) from the Louisiana Department of Transportation and Development.

4. The Chief Executive Officer (or his or her designee) of the Capital Area Transit System.

The Policy Committee also has several committees for which the CRPC staff provides administrative support and technical assistance. Some of these committees have members who do not currently serve on the Policy Board but represent stakeholders in the community:

Technical Advisory Committee (TAC) The Transportation Technical Advisory Committee membership is comprised of representatives of general-purpose government who manage the day-to-day technical aspects of the transportation system infrastructure or their designee. To broaden the base of technical expertise available to the committee, and meet Chapter I, Title 23 CFR Part 450 subpart C 450.306 (i), requirements of the membership of the TAC includes representatives from several affected transportation modes and community organizations. The TAC, under the direction of the TPC, makes recommendations to the TPC for matters necessary to comply with the requirements of federal and state law. The TPC consists of the following membership:

MEMBERS

REPRESENTING

Technical Representative	East Baton Rouge Parish Public Works
Technical Representative	East Baton Rouge Parish Planning Commission
Technical Representative	Livingston Parish
Technical Representative	Ascension Parish
Technical Representative	West Baton Rouge Parish
Technical Representative	Iberville Parish

Planning Work Program 2023

Technical Representative	City of Baker
Technical Representative	City of Zachary
Technical Representative	City of Central
Technical Representative	City of Port Allen
Technical Representative	Town of Brusly
Technical Representative	Town of Addis
Technical Representative	City of Denham Springs
Technical Representative	Town of Walker
Technical Representative	Village of Port Vincent
Technical Representative	Town of Livingston
Technical Representative	City of Gonzales
Technical Representative	Town of Sorrento
Technical Representative	City of Plaquemine
Technical Representative	City of St. Gabriel
Technical Representative	Capital Region Planning Commission
Technical Representative	Baton Rouge Chamber of Commerce
Technical Representative	Baton Rouge Metro Airport Staff
Technical Representative	Capital Area Transit System
Technical Representative	Paratransit Operator
Technical Representative	Port of Greater Baton Rouge
Technical Representative	American Automobile Association
Technical Representative	LA Motor Transportation Association
Technical Representative	Railway Association
Technical Representative	LA Transportation Research Center

Planning Work Program 2023

Technical Representative	Baton Rouge Green
Metropolitan Planning Rep.	LA DOTD
Dist./Design/Eng. Rep.	LA DOTD
Public Transportation Rep.	LA DOTD
Technical Representative	Federal Highway Administration
Technical Representative	LA Department of Environmental Quality
Technical Representatives	Private Sector

Coordinated Human Transportation Services Committee (CHTSC) The purpose of the Capital Region MPO Coordinated Human Services Transportation Planning Committee is to improve utilization of transit service resources and transit funding resources for commuters, elderly, persons with disabilities, persons with low income, rural area commuters and school system commuters of the area. The goals of the Committee will be the same as those established in the Regional Major Transportation Plan. In addition, the committee will analyze issues arising within the planning area from a coordinated mass transit perspective and make recommendations to the TAC and TPC.

ITS Committee The purpose of the ITS committee is to discuss any outstanding ITS issues, status of ITS projects, promote new ITS projects, and monitor regional ITS architecture. It also provides a venue for personnel from different Traffic Management Centers (TMC's) to collaborate and create seamless communications among themselves.

TPC and TAC members, agendas, schedule, and meeting minutes are available at www.crpcla.org.

Staff Involvement

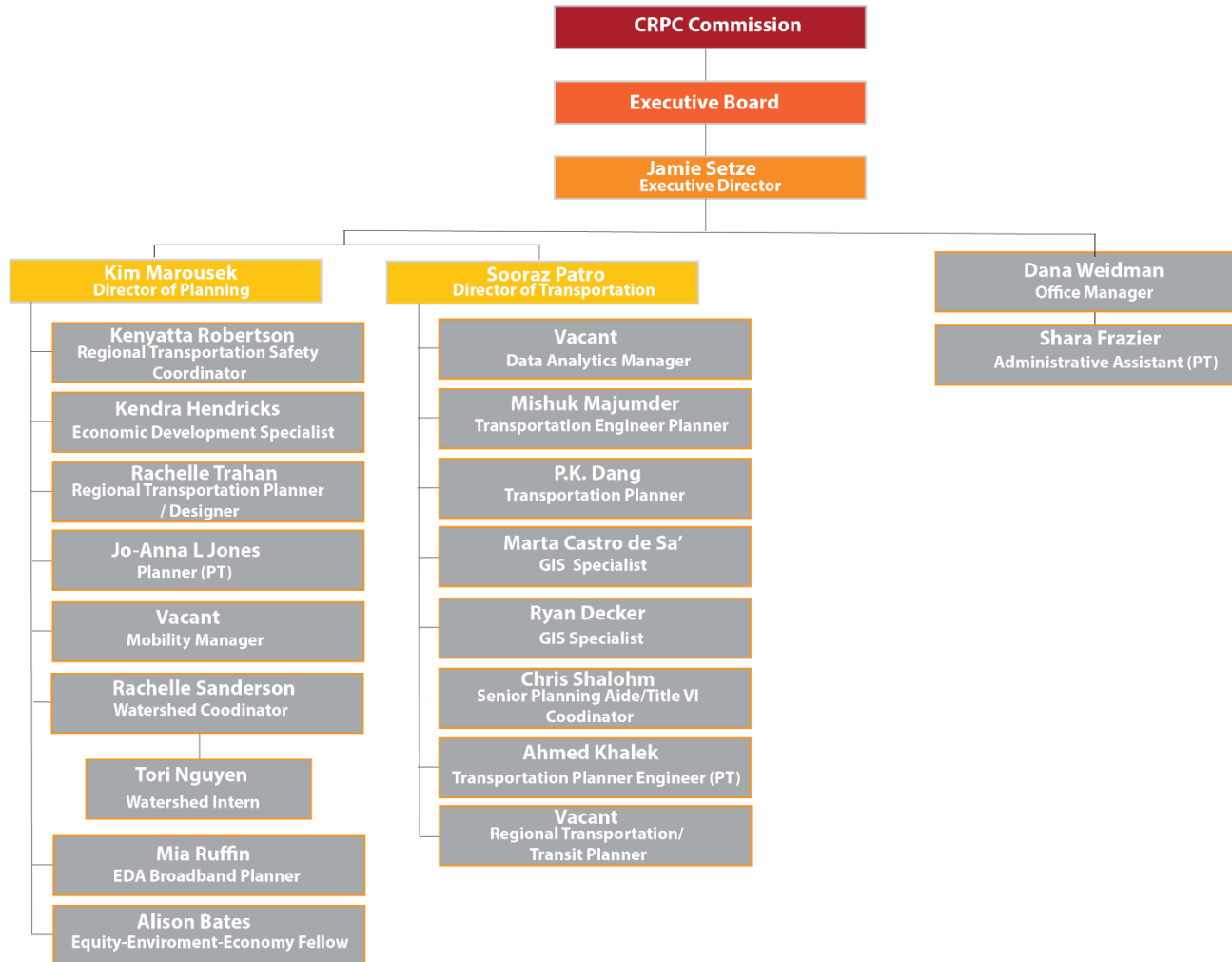
CRPC has a diverse staff that carries out regional transportation planning in coordination with the state and operators of publicly owned transit services. To stay current in planning practices and for professional development, CRPC staff attend conferences, training, and workshops throughout the year. Some of them are listed below.

- Lifesavers Conference
- West Baton Rouge Chamber of Commerce Membership Lunch Meeting
- Statewide Economic Development Summit
- National Planning Conference
- NHI courses
- TRB webinars
- GISP exam prep courses
- Walk/Bike/Ped Conference
- LTAP
- ArcGIS Pro workshop
- GIS courses
- URISA workshops
- WTO International Trade Week

- Baton Rouge Area Chamber monthly luncheons
- MOVES3 Air Quality Emissions Training
- Operations Academy TSMO Senior Management Program
- TTEC Workshops
- National Academy of Sciences Conference
- NADO
- Associates for Commuter Transportation Conference
- APA LA Chapter State Planning Conference
- Distracted Driving Summit
- CAV 101 Seminars
- American Planning Association National Conference
- American Planning Association Southeast Region Conference
- Transportation Research Board Annual Conference/workshops
- FHWA TPM Peer Exchange Workshops
- Louisiana Industrial Development Executive Association (LIDEA)
- International Economic Development Council Trainings/Webinars
- U.S. Dept. of Homeland Security Trainings 2021:
 - Including People with Disabilities and Others with Access and Functional Needs in Disaster Operations
 - Fraud Awareness and Prevention
 - Diversity Awareness
 - Civil Rights and FEMA Disaster Assistance
 - Building Partnerships with Tribal Governments
 - Multi-Cultural Communication
 - Stafford Act
 - No Fear Act
 - FEMA EEO Employee Course

Unified Planning Work Program 2023

Figure 3. CRPC Organization Chart



Task A-1: Citizen Participation and Public Outreach

This task will address CRPC's public participation plan that provides reasonable opportunities for interested parties and general public to comment on the Metropolitan Transportation Planning processes as required by FAST Act and previous legislations.

Objectives

- To develop informational materials that support a cooperative planning process and explain CRPC plans and activities in a concise and straight forward manner.
- To increase both awareness and interest in transportation plans and the transportation planning process using traditional and innovative approaches.
- To provide frequent opportunities for interested parties from the private business community, public officials, neighborhood organizations, the physically challenged and other groups impacted by transportation plans to participate in the development of CRPC transportation plans and to encourage public participation in transportation planning activities at all levels.

Previous Work/Accomplishments

- Advertised, prepared for, and conducted TAC/TPC Meetings. Staff prepared and presented to the members of Technical Advisory and Transportation Policy Committees, and to the general public about the action and non-action items listed below:

Action Items

- Transportation Improvement Program (TIP) (2019 – 2022) Amendments – Highway Projects
- Transit TIP (2019 – 2022) Amendments and Program of Projects
- Unified Planning Work Program (UPWP) FY 2021 Amendment
- Unobligated STP>200K Funding – Proposed Projects
- Call for Projects – TIP FY 2023 - 2032
- Public Participation Plan
- Highway Safety Improvement Program Targets – 2021
- Pavement and Asset Condition Data Collection RFP
- Long Range Transportation Plan (MOVE 2046) RFP
- Regional Bicycle and Pedestrian Plan (RBPP) RFP

Unified Planning Work Program 2023

- Ferry Feasibility Study (FFS) RFP
- Baker Transit and Park/Ride Center Phase-II RFP

Non-Action Items

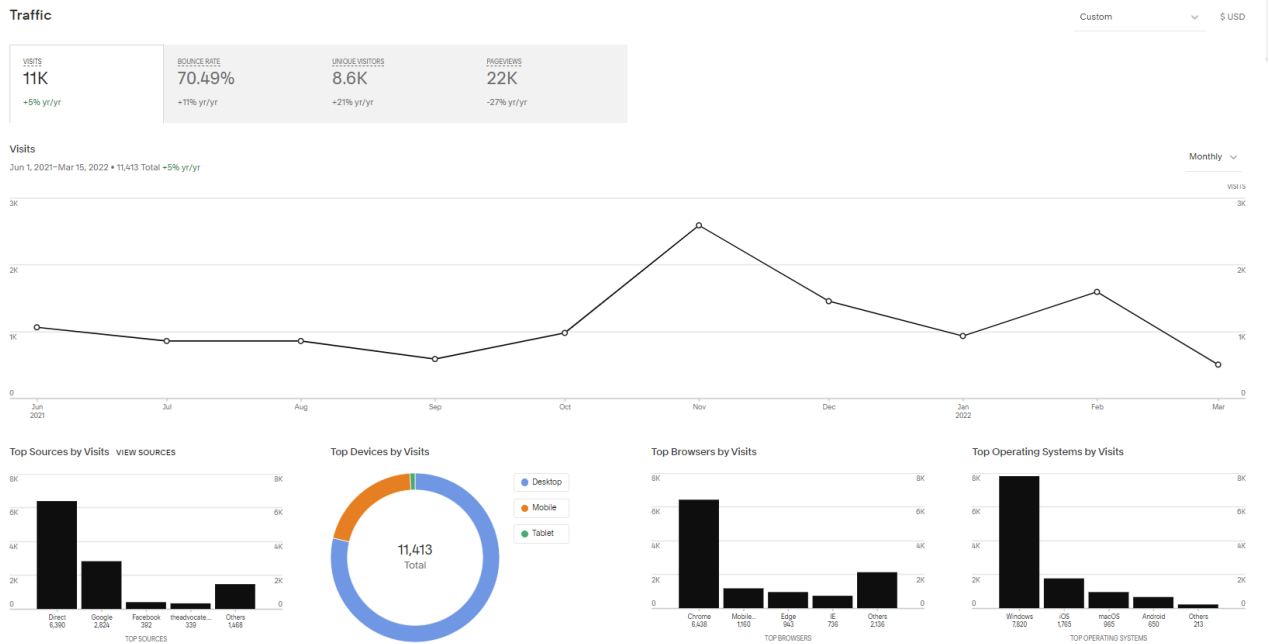
- MOVE 2046 Public Outreach
- MOVE 2046 Documentation (draft and final)
- Commuter Krewe of Louisiana (TDM) project
- Local Road Functional Classification Change Requests
- LADOD Local Road GIS Application
- Capital Region Transportation Safety Coalition (CRTSC) update
- Local Road Safety Plan (East Baton Rouge Parish)
- Infrastructure Investment and Jobs Act update
- CRPC marketing and outreach project status
- MOVE 2046 Air Quality Conformity Analysis (draft and final)
- MPO activity update
- Traffic Counts During COVID-19 Analysis
- TAC/TPC Schedule 2022
- MPO Certification Review
- Annual List of Obligated Projects update
- Staff participated in several public meetings regarding regional transportation projects such as moveBR projects, LA-30 and I-10 widening etc.
- Conducted enhanced outreach regarding the Long-Range Transportation Plan (MOVE 2046); Regional Bicycle and Pedestrian Plan; and Ferry Feasibility Study; survey through stakeholders, non-profits, radio, TV, and social media. This resulted in the surpassing the MOVE 2042 completed survey target and exceeded by more than 30%.

Staff continued to regularly update the website with meeting notices, documents, and other information as needed. The website can be viewed here: <http://www.crpcla.org/>

Staff continued to coordinate with LDEQ and BRCAC and maintained the info on the ERC information resource website. The LA ERC website can be viewed here: <http://www.laerc.com/>

Unified Planning Work Program 2023

- Continued providing technical assistance to the public, local governments, businesses, and non-profit organizations as and when requested.
- Staff prepared and published RFPs for the Regional bike/ped plan, Ferry Feasibility Study, Baker Transit Center/Park, and Ride Phase 2, MOVE 2046 MTP Update, Travel Demand Model update, Pavement Asset Data Collection projects as per the procedures documented in the new consultant selection procedures
- Marketing and Outreach Campaign Project Completion
- Ongoing updates and modernization of CRPC website
- Finalized CRPC vision statements
- Finalized CRPC communications plan
- Worked on new branding, social media protocols, and final plan strategies
- Website visits (July 1, 2021 – March 15, 2022): There were 8.6K unique visitors, 11.4K visits, and about 22K page views in the first nine months of FY 21-22





July 1, 2021 – March 15, 2022

CRPC posted regular updates on social media. Provided are the following stats for Facebook and Twitter:

- 69 Facebook posts with a reach of close to 4,837 people
- About 2750 impressions on Twitter

Expected Work

CRPC will

- Continue implementing community outreach and public participation guidelines mentioned in the MPO's Public Participation Plan (PPP)
- Complete the CRPC Public Outreach and Marketing Campaign project. Update the CRPC website
- Continue to extend CRPC's outreach using social media, electronic and paper comment forms, electronic and paper newsletters, media releases, and appropriate innovative participation techniques
- Use outreach materials developed under previous Branding/Marketing work program to educate public and stakeholders about the MPO, transportation and land use planning, federal grants, and environmental issues
- Continue to conduct training/workshops/meetings to keep the local elected officials and various other members informed about CRPC, MPO processes, land use planning etc.
- Conduct, facilitate, and participate in project related public meetings not limited to the following:
 - Regional Bicycle/Pedestrian Plan; and,
 - Ferry Feasibility Study update.
- Continue to update a comprehensive database of stakeholders that includes environmental justice, neighborhood, non-profit, voluntary, and business organizations. An effort will be made to communicate and include as many stakeholders as possible in the planning process
- Continue presenting information regarding local and regional transportation and environmental issues at the MPO and CRPC meetings
- Tracking transportation legislation at the federal and state level

Performance Measures

- Number of website visits
- Number of likes/visits on Facebook and other social media
- Number of document downloads from the website
- Number of stakeholders in the comprehensive stakeholder database

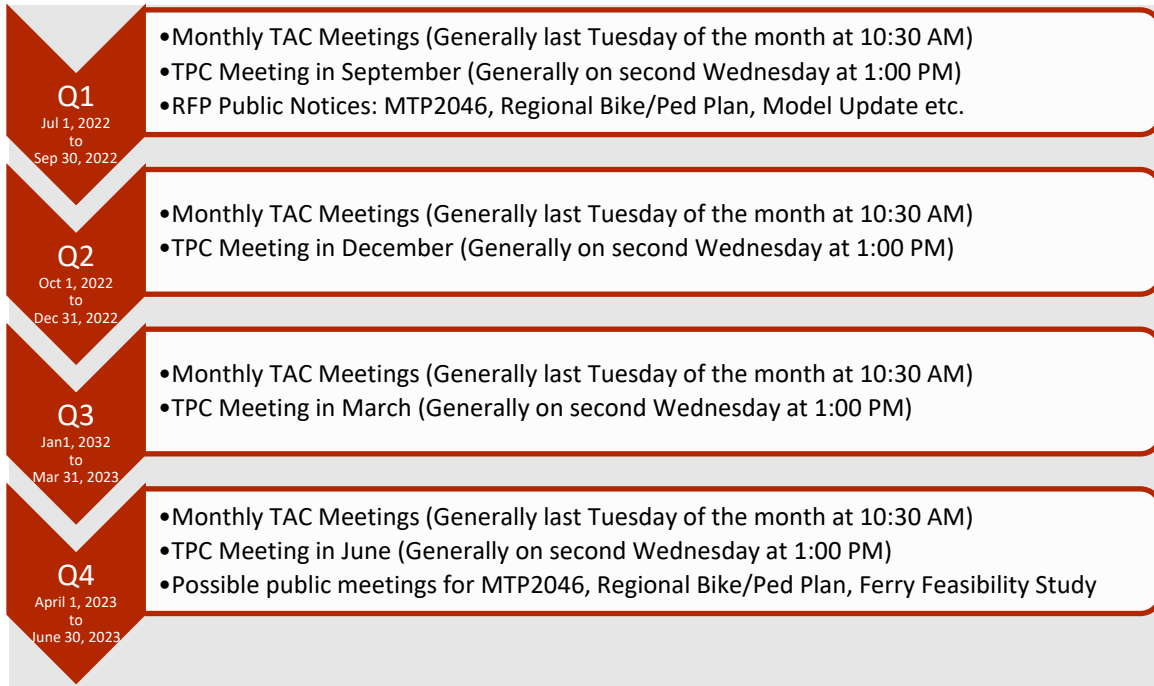
Results/Products

- Dissemination of information through websites, social media and other traditional methods
- Update website
- Updated Stakeholder Database
- Public notices regarding CRPC meetings.

Funding Summary

UPWP Task PL A-1 Budget	
Funding Source	Amount (\$)
FHWA Planning (PL)	\$73,280
FHWA Excess PL	
STP>200K	
Local Match	\$18,320
Total Budget	\$91,600
Labor	Amount (\$)
CRPC Staff	\$91,600
Consultants	\$0

Timeline



Task A-2: Congestion Management Process

The purpose of this task is to use a systemic approach collaboratively developed and implemented throughout the CRMPO region to ensure safe and effective management and operations of new and existing transportation facilities through use of demand reduction and operational management strategies.

Objectives

- To allow people to travel throughout the region conveniently, predictably, and with minimal delay
- To develop and maintain a data driven Congestion Management Process (CMP) that promotes multimodal system performance measures and strategies that can be reflected in the Metropolitan Transportation Plan (MTP) and Transportation Improvement Program (TIP)

Previous Work/Accomplishments

- Congestion Management Process
- Analyzed 2019 through 2021 speed data utilizing RITIS analytics tools on the interstate system in the MPO region and developed maps for the following scenarios:
 - Weekdays all year and by peak,
 - Summer months by peak,
 - Weekdays during fall and by peak; and,
 - Weekdays during springtime.
- Conducted GIS analysis for street network travel time and congestion utilizing NPMRDS dataset. Analyzed and thematic maps of NPMRDS network based on Peak Hour Excessive Delay (PHED)
- Transit schedule adherence and timetable validation
- Created CATS routes in the NPMRDS RITIS website,
- Analyzed some of the routes for average travel times and unreliability,
- Data from the analysis is being used to validate the timetables; and,
- Presented the results at the regular CATS/CRPC planning meetings.
- COVID-19 Post Pandemic Impact Analysis
- Brainstormed on analyzing the NPMRDS to see the impact of COVID-19 pandemic on travel times

- Staff completed Transportation Systems Management and Operations (TSMO) online course.
- Staff successfully completed Operations Academy Senior Management Program for TSMO
- Attended various RITIS Toolkit workshops hosted by University of Maryland/FHWA HQ

Expected Work

CRPC will

- Monitor and reassess performance measures and targets that will be used to measure congestion on both a regional and local scale. These performance measures should relate to, and support, regional objectives. Monitor the following FHWA required targets and other performance measures identified in the long-range plan
 - Percent of Person-Miles Traveled on the Interstate That Are Reliable,
 - Percent of Person-Miles Traveled on the Non-Interstate NHS That Are Reliable,
 - Truck Travel Time Reliability (TTTR) Index on the Interstate system; and,
 - Annual Hours of Peak-Hour Excessive Delay per Capita on NHS system.
- Coordinate with local and state transportation partners to collect the data for setting and tracking the TPM targets
- Continue to review, download, and analyze the monthly NPMRDS (V2) dataset from the RITIS website to conduct performance-based planning and programming and follow the reporting requirements of the new PM3 regulations
- Develop mobility reports and a new CMP document utilizing the travel data analysis results. Crash data, functional classification, TDM strategies and other available data will be utilized in prioritizing the congested segments and identifying implementation strategies and performance measures
- Coordinate with local, regional, and state partners to identify and assess appropriate strategies to mitigate congestion. This action involves both identifying and assessing potential strategies and may include efforts conducted as part of the MTP, corridor studies, or project studies
- Work on programming and implementing strategies for determining funding sources, prioritizing, and allocating funding in the TIP
- Monitor effectiveness of the strategies and make necessary tweaks to achieve the performance measures and targets through coordination with local and regional partners
- Continue to work on reducing congestion through Travel Demand Management (TDM) strategies such as the Commuter Krewe of Louisiana program and promoting alternative modes of travel such as biking, walking and use of public transit
- Attend, if available, workshops, conferences, and training to improve efficiency and skills under this work program task

Performance Measures

- Percent of Person-Miles Traveled on the Interstate That Are Reliable
- Percent of Person-Miles Traveled on the Non-Interstate NHS That Are Reliable
- Truck Travel Time Reliability (TTTR) Index on the Interstate system
- Annual Hours of Peak-Hour Excessive Delay per Capita on NHS system

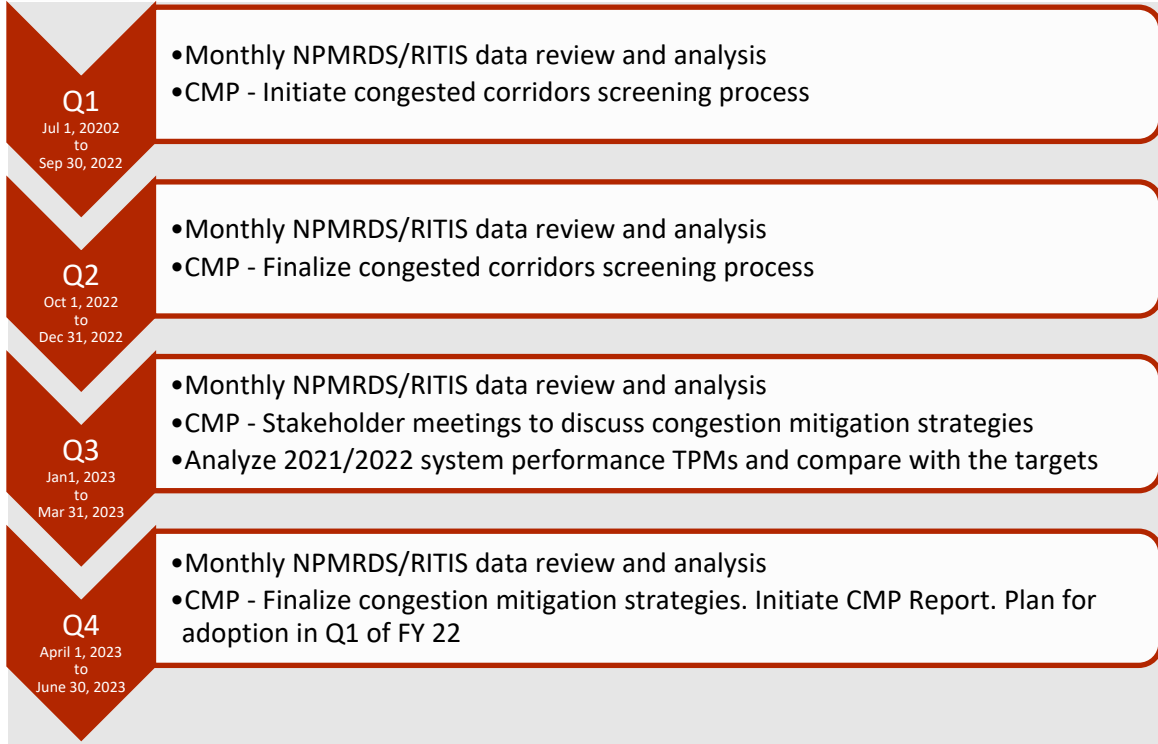
Results/Products

- Congestion Analysis/Mobility Reports and Maps
- Updated CMP along with identified prioritized congested corridors.
- Implementation of TDM Strategies
- Facilitation of the appropriate committee meetings

Funding Summary

UPWP Task PL A-2 Budget	
Funding Source	Amount (\$)
FHWA Planning (PL)	\$54,896
FHWA Excess PL	
STP>200K	
Local Match	\$13,724
Total Budget	\$68,620
Labor	Amount (\$)
CRPC Staff	\$68,620
Consultants	\$0

Timeline



Task A-3: Coordinated Public Transit Human Services

The purpose of this task is to address the Coordinated Public Transit Human Services Transportation Plan as required by the FAST Act and foster coordination and communication among all the transit providers in the region.

Objectives

- To develop and maintain a Coordinated Public Transit Human Services Transportation Plan through a process that includes representatives of public, private, and non-profit transportation, and human services providers, as well as the public

Previous Work/Accomplishments

- CRPC authored a complete revision of the regional Coordinated Human Services Transportation Plan utilizing input from workshops, quarterly meetings, the long-range transportation planning process, and the most recent demographic data currently available
- Maintained the human services transportation provider database to better contact regional transportation resources and deficiencies amidst global and regional barriers
- Staff regularly participate in webinars, workshops, and annual training sessions to share information and stay aware of best practices in human services transportation planning
- Provided letters of support for Coordinated Human Services Providers for 5310/5311 Federal funding
- Worked closely with LA DOTD to conduct quarterly meetings with Coordinated Human Services providers
- Attended multiple statewide plan survey meetings to assist in data-supported statewide plan updates
- Collaborating and strategy sharing with peer coordinators across the state, digitally and in-person
- Presented on the role and commission's contribution to the CHSTP effort to the Governor's Office of Disability Affairs Accessibility Transportation Committee

Expected Work

CRPC will

- Continue quarterly meetings with the human services agencies that provide or have clients that need transportation services in the Capital Region

Unified Planning Work Program 2023

- Collect information on transportation services and maintain the regional transportation coordination plan with consideration of global and regional barriers (e.g. gas cost spikes, driver shortages, dynamic health standards)
- Offer input to the statewide selection process for 5310, 5311, 5316 and 5317 funding; and,
- Utilize planning efforts from Task D-4 for transit and special transportation efforts.
- Advocate for the need for public transit across the Capital Region, especially for those who are elderly and disabled
- Attend and complete DOTD-CHSTP coordinator training courses
- Monitor and update the Coordinated Human Services Transportation Plan document and role based on feedback from DOTD commissioned survey data, transit providers, riders, and professional transportation planners
- Assist transit providers with grant applications as needed, including MPO approval letters

Performance Measures

- Quarterly Coordinated Public Transit Human Services Transportation working group meetings
- Updated elderly population, families below poverty and disabled population maps

Results/Products

- Updated information on transportation services that are being provided in the Baton Rouge area
- Updated Coordinated Human Services Transportation Plan
- Quarterly Coordinated Human Services Transportation meetings
- Research on utilizing a Centralized Scheduling Tool

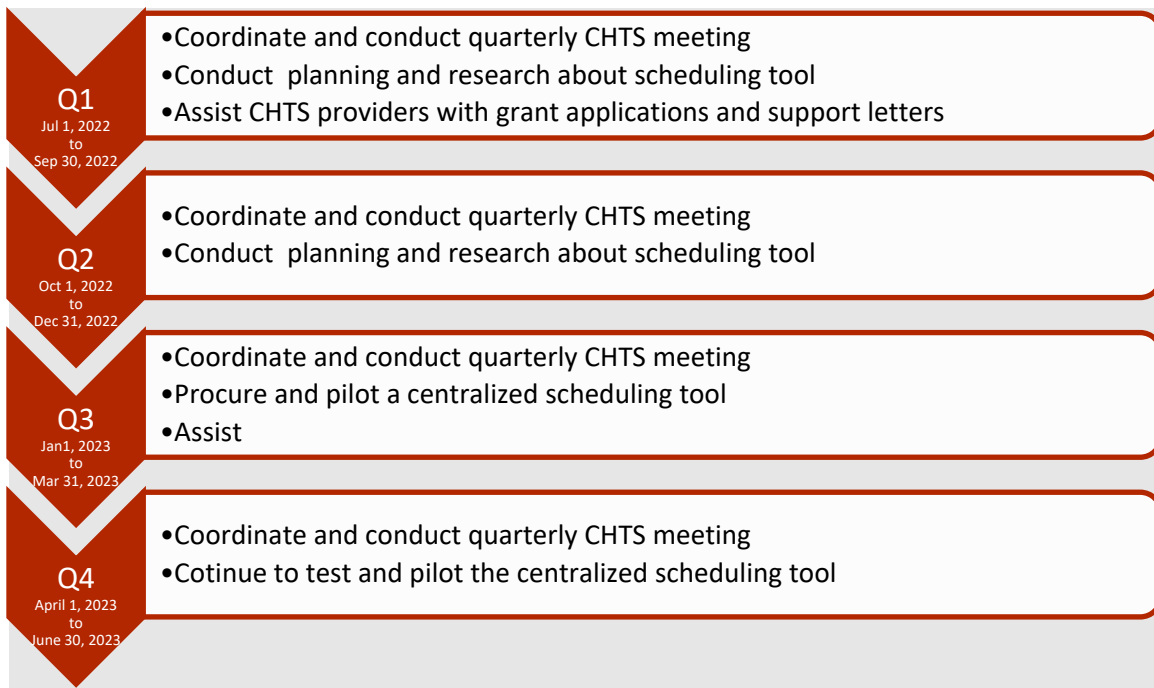
Funding Summary

UPWP Task FTA A-3 Budget	
Funding Source	Amount (\$)
FTA 5303	\$43,000
FTA Carryover	\$0
CATS PL	
Local Match	\$7000
Total Budget	\$50,000
Labor	Amount (\$)

Unified Planning Work Program 2023

CRPC Staff	\$50,000
Consultants	\$0

Timeline



Task A-4: Performance Based Planning and Programming

This task addresses periodic reviews, changes, and progress on the short-range planning process and changes to the Unified Planning Work Program (UPWP) as required by the FAST Act and previous legislations.

Objectives

- To conduct short-range transportation and transportation-related planning activities with short-term and implementation focus, including the development and administration of the Transportation Improvement Program (TIP) and UPWP
- To keep the Transportation Policy Committee (TPC), the Technical Advisory Committee (TAC), other committees and the public informed about the status of short-range planning activities
- To incorporate and implement Performance Based Planning and Programming (PBPP) principles and practices in the 3C planning process

Previous Work/Accomplishments

- Maintained a cooperative, continuous, and comprehensive framework for making transportation investment decisions in the metropolitan area. Staff reviewed the progress on the planning process and its impact on the UPWP. Staff continued to consult and coordinate with local planning officials responsible for other types of planning activities. These other activities include planned growth, smart growth, complete streets, economic development, environmental protection, airport operations, and freight movement
- Monitored the progress of UPWP tasks on a regular basis to ensure their effective implementation. Worked on monthly and quarterly narratives to support the grant requisitions
- Monitored the TIP projects on a regular basis. Staff met with local entities and LADOTD to understand the status of the projects and modified/amended the TIP accordingly. Coordinated with local entities and encouraged timely implementation of the MPO funded projects
- Transmitted the Transit TIP amendments to DOTD and followed with DOTD to check the status of the amendments. CRPC's TIP can be found on the Capital Regional MPO website <https://crpcl.org/tip>
- Coordinated with DOTD and established 2021 Safety TPM targets
- Coordinated and participated in meetings with local governments to discuss the status of STBG>200K projects and discussed strategies for moving forward with the projects
- As recommended by the TPC, Staff developed schedule of TAC and TPC meetings for 2021. The TPC meetings will be held quarterly to improve participation from the TPC members
- Continued to work with the CPEX coalition regarding the tracking of performance measures identified in the CRISIS mobility report. This effort is meant to identify, track, and communicate progress effectively with the public

Unified Planning Work Program 2023

- Worked on completing the Federally Obligated projects reports for FY 2020. Coordinated with DOTD and CATS to gather the necessary data and analyzed the data inclusion in the reports. Obligated projects can be found on the Capital Regional MPO website <https://crpcla.org/tip>
- Staff worked with local jurisdictions and submitted Stage-0 documentation to LADOTD for H number for all projects selected during the December 2019 Unobligated STPBG>200K funds project selection meeting.
- Participated in LPC meetings to learn about various initiatives by all LA MPOs including the updates from DOTD and other stakeholders such as LTAP, LCF etc.
- Provided technical assistance to Capital Area Transit System (CATS) in implementation of various short and long-range activities as described under UPWP Task D4
- Published information and documents pertaining to the short-range planning activities and solicited input from the public and respective committees.
- Staff attended the virtual TRB 2021 annual virtual conference.
- Staff Completed Pavement Management Fundamental Web-Based Training (WBT) by National Highway Institute.
- Staff completed Louisiana LTAP Training- Pavement Preservation & Road Surface Management.

Expected Work

CRPC will

- Conduct performance-based Planning and Programming (PBPP)
- Integrate performance management concepts into the existing federally required transportation planning and programming processes not limited to the following:
 - Long Range Transportation Plan (LRTP),
 - Transportation Improvement Program (TIP),
 - Strategic Highway Safety Plan (SHSP),
 - Congestion Management Process (CMP),
 - Air Quality Conformity Analysis using latest MOVES model version; and,
 - Intelligent Transportation System (ITS).
- Ensure to link transportation investments in the TIP with goals/performance measures and assess the impact of such investments on achieving the performance targets

Unified Planning Work Program 2023

- Coordinate with DOTD to monitor the MPO targets for congestion, pavements, bridges, and air quality performance measures. Develop a process to monitor/measure the progress towards the performance targets
- Device a performance dashboard showing all the metrics and communicate the results to TAC, TPC, transportation stakeholders, and the general public
- Continue to evaluate the STBG>200K project selection process and update it as needed with input from the TAC and TPC
- Administer call for STBG>200K projects review and analyze the project submittals, facilitate TAC working group meetings, get TPC approval on the final selection, submit the selected projects to LADOTD and incorporate the approved projects to the TIP
- Continue to monitor and maintain the current TIP and coordinate with ongoing local comprehensive planning efforts.
- Develop, refine, and administer UPWP, related to federal grants and third-party contracts
- Develop and participate in FHWA's pilot program through EDC STIC funding to implement eTIP for the BR MPO.
- Incorporate Decision Lens for multiple objective decision making for TIP and MOVE 2046 projects.
- Develop **MPO Functional Classification Mileage** Table for the five Parishes within the MPA.
- Continue to conduct TAC, TPC and other committee meetings, keep them informed about the status of short-range planning activities, solicit their input, and incorporate their recommendations in the planning process
- Prepare TIP self-certification document for internal purposes to document how the TIP projects address the FAST Act planning factors and monitor performance measures
- Analyze and prepare Environmental Justice (EJ) profile of the TIP and other planning activities to monitor proportional distribution of benefits and address any identified issues/concerns
- Continue to support and provide technical assistance to CATS and other public transit agencies
- Develop annual list of federally funded obligated highway and transit projects
- Continue to maintain the GIS and electronic database of the TIP projects and information and publish them on CRPC's website
- **PADC: Work with selected consultant to analyze collected data and relay the information to member jurisdictions.**

Performance Measures

- Implementation and refinement of the STBG>200K project selection process
- Updated TIP and UPWP that conform to federal, state, and local requirements
- Documentation of annual list of federally funded obligated projects

Results/Products

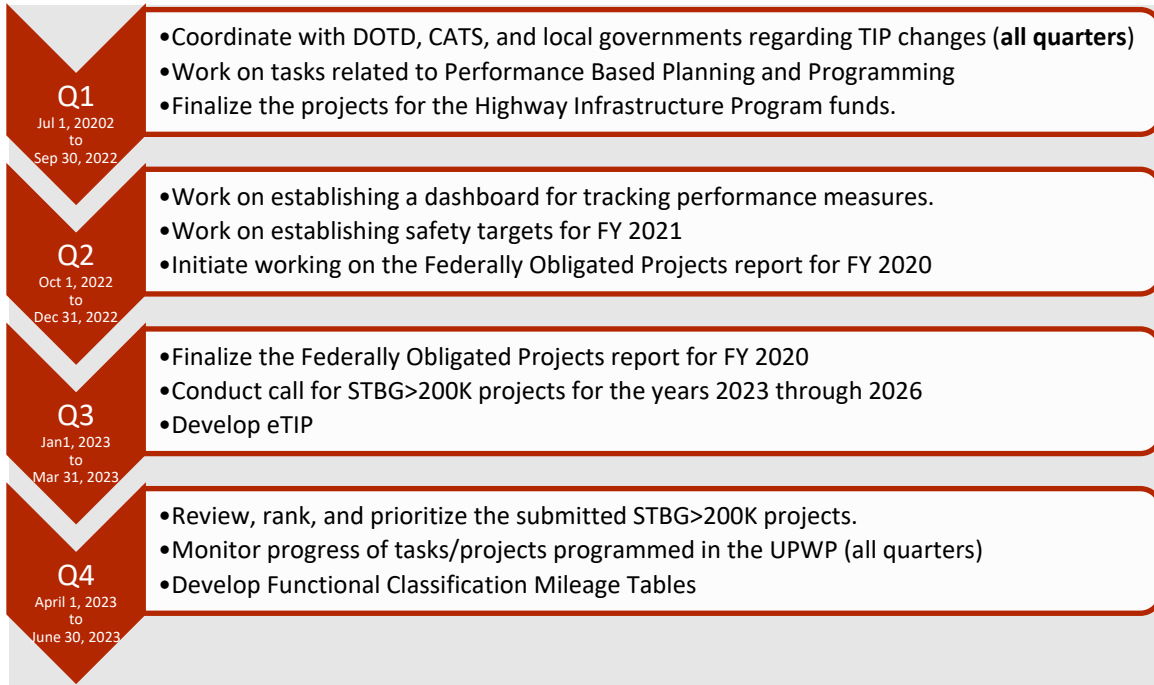
- PM1, PM2, PM3 targets setting and monitoring process
- Updated TIP and UPWP documents
- TIP self-certification document
- eTIP
- MPO Functional Classification Mileage Table
- Annual List of Federally Funded Obligated Projects (ALOP)
- GIS and electronic database of TIP projects and information
- **PADC: Pavement Condition Reporting**
- **PADC: Asset Management Summary/Reporting**
- Regular meetings of TAC, TPC, and other sub-committees
- Coordination with the public, stakeholder groups and other partners and incorporation of their input in short range planning process

Funding Summary

UPWP Task PL A-4 Budget	
Funding Source	Amount (\$)
FHWA Planning (PL)	\$112,512
FHWA Excess PL	
STP>200K	
Local Match	\$28,128
Total Budget	\$140,640
Labor	Amount (\$)
CRPC Staff	\$140,640
Consultants	\$0

Timeline

Unified Planning Work Program 2023



Task A-5: Non-motorized Planning and Complete Streets

- This task addresses the Federal requirements of 23 USC. 134(h) through the development and support of plans and projects that increase and improve cycling and walking facilities, improve safety and security of vulnerable roadway users, and create alternative transportation mode choices for all travelers.

Objectives

- To develop, support and promote plans and projects that increase and improve cycling and walking facilities, improve safety and security of vulnerable roadway users, and create alternative transportation mode choices for all travelers.
- To prepare and evaluate transportation plans so that bicycle and pedestrian facilities are integrated wherever practicable, into the network.

Previous Work/Accomplishments

- Served as a team leader for Bike Ped emphasis area and participated in advancing bicycle and pedestrian safety strategies in partnership with other stakeholders.
- Served as a member of Technical Advisory and Steering Committees for East Baton Rouge Parish Bike Ped Masterplan
- Participated in the ongoing committee meetings; and,
- Provided feedback for final report.
- Served on States Complete Streets Committee
- Attended all meetings; and,
- Provide data and reports pertaining to the MPO.
- Assisted LTRC project steering committee with the development of standards for conducting bike ped counts statewide
- Focus on site selection within East Baton Rouge Parish; and,
- Coordinated with City officials and levee board on site selection.
- Conducted ad-hoc bike/pedestrian counts based on request from various stakeholders
- Met with officials from CPEX and LSU AG Center to identify key stakeholders at MPO's state trooper posts, safety coalitions, and economic development districts for bike ped safety throughout the state
- Kicked off Capital Region MPO Bicycle Pedestrian Plan. Initiated stakeholder meetings and developed a technical advisory committee. Began existing conditions and network demand analysis.

Expected Work

- CRPC will develop a region wide Bike Ped Masterplan that will incorporate Bike Ped Planning throughout the entire MPO
- Conduct regular project status meetings with consultant,
- Development of community engagement plan,
- Organize Technical Advisory Committee meetings,
- Conduct stakeholder meetings,
- Conduct neighborhood-based meetings (within the MPO boundary),
- Conduct analysis of crash data, traffic counts, and bike/ped facilities,
- Develop an implementation methodology for prioritizing projects,
- Conduct analysis of bike ped facilities within a quarter of a mile of transit stops; and,
- Develop a regional Bike/Pedestrian Plan.
- Initiate the process of implementing the recommendations from the Baker and Denham Springs Bike/Ped Plans
- Develop bicycle and pedestrian safety toolkit that is transferable within the MPO boundary and available to the public
- Collect and analyze bicycle and pedestrian counts at select locations throughout the region
- Analyze crash data to develop countermeasures to create safe and attractive cycling and walking environments and to protect vulnerable roadway users
- Promote bicycle use and safety at various community events throughout the region
- Support and promote planning activities that increase awareness of the public health benefits associated with active transportation. Coordinate with both for-profit and non-profit community partners

Performance Measures

- Number of stakeholder and public meetings conducted as part of the Regional Bike/Ped Planning Process
- Number of TAC and TPC meetings where Bike/Ped plan updates are presented
- Number of bicycle and pedestrian locations counted
- Expansion of the Bike Ped emphasis area team of The Capital Region Transportation Safety Coalition

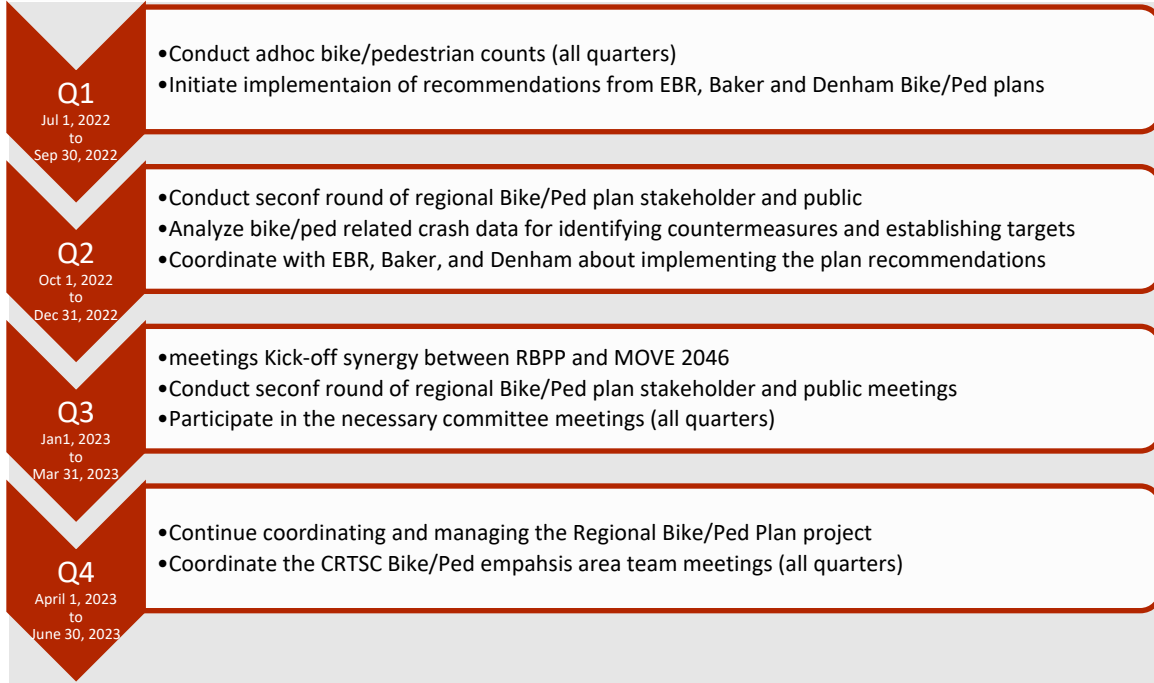
Results/Products

- Development of Region wide Bike Ped Masterplan
- Results from RSA's
- Results from Bicycle and Pedestrian Counts
- Implementation of Denham Springs Bike Ped Plan
- Implementation of EBR Bike Ped Masterplan

Funding Summary

UPWP Task PL A-5 Budget	
Funding Source	Amount (\$)
FHWA Planning (PL)	\$61,888
FHWA Excess PL	
STP>200K	
Local Match	\$15,472
Total Budget	\$77,360
Labor	Amount (\$)
CRPC Staff	\$77,360
Consultants, Travel, Software	\$0

Timeline



Task A-6: Air Quality Planning

This task addresses the federal requirements of 23 USC. 134(h)(1)(E) to protect and enhance the environment, and promote consistency between transportation improvements, and state and local planned growth and economic development patterns.

Objectives

- To monitor the transportation planning activities and ensure that such activities do not deteriorate the air quality in the five parish non-attainment areas
- To keep the public, especially those with vulnerable health conditions, informed about air quality through extensive pro-active outreach activities
- To promote use of alternative clean fuels
- To reduce the number of Single Occupancy Vehicles (SOV) by promoting alternative modes of travel

Previous Work/Accomplishments

- Staff attended the Baton Rouge Clean Air Coalition (CAC) meetings at LDEQ Offices. Staff provided technical support and presented information about projects related to transportation conformity, CMAQ projects status, Advance Program status and about other air quality related projects
- Worked with Louisiana Clean Fuels to update proposed alternative fuel corridors maps for the Capital Region and the state of Louisiana. The maps were used as part of the proposal to USDOT requesting designation of Louisiana Interstates as alternative fuel corridors. Also aided develop maps of existing and proposed EV charging stations in Baton Rouge
- Travel Demand Management / Commuter Krewe of Louisiana
- Began developing transition and sustainable funding plan for the end of year 3 of this project,
- Developed HOT Lane Analysis,
- Conducted Commute Patterns survey with local partners and analyzed the results,
- Organized “Try it Days” to get local partners to carpool,
- Initiated regional park and ride analysis,
- Secured preferred parking spaces for state agencies whose employees use carpools/vanpools,
- Conducted Guaranteed Ride Home Campaign,
- Represented Commuter Krewe at ACT conference,
- Began analyzing new software platforms,

Unified Planning Work Program 2023

- Finalized linkage of Ride Pro platforms between the NOLA RPC, CRPC, and Acadiana Planning Commission,
- Organized Staggered Shift Pilot program for East Baton Rouge Parish,
- Streamlined on boarding procedures for new registrants into the Commuter Krewe ride-match database; and,
- Developed draft for scope of continued work for the TDM program 2020 -2023.
- **Developed MOVES 3 Model inputs and Air Quality Conformity Analysis (MOVE 2046)**
- **Organized and coordinated Inter Agency Coordination Committee Meetings (x4)**
- Continued work on maintaining the ERC IRC website www.laerc.com
- Assisted BRCAC with developing a new website for the committee

Expected Work

CRPC will

- Continue to monitor changes in the MTP and TIP. CRPC will coordinate interagency meetings if the proposed changes violate the current conformity determination and take necessary action. Any such changes will only be made to the TIP or MTP after obtaining approval from FHWA and EPA
- Support and coordinate with LDEQ, BRCAC, LCF and other regional stakeholders to develop manageable, sustainable, and realistic strategies for increasing the availability of Emission Reduction Credits (ERC's). CRPC in coordination with partners will continue to maintain the information management resources to support the program. The following are some of the tasks that will be required to set up the information resource
- Coordinate with BRCAC partners to:
 - Continue to implement public education/outreach on air quality issues especially relating to transportation. This may include presentation, media events, seminars, conferences, and informational/promotional materials,
 - Continue supporting regional air quality planning initiatives such as the Ozone Advance and PM Advance programs,
 - Provide technical assistance to the local governments in quantifying emissions using the MOVES model and preparing air quality reports,
 - Monitor, analyze, and comment on regulatory developments at the federal, state, and local level related to transportation air quality and report to the affected entities regarding impacts to planning activities; and,
 - Collaborate and partner with BRCAC and LCF to promote regional clean air activities and provide technical assistance as needed.

Unified Planning Work Program 2023

- Continue to implement an expanded and rigorous three-year Travel Demand Management (TDM) – Commuter Krewe of Louisiana program in the CRMPO area
- Provide assistance/information to Louisiana Department of Environmental Quality (LDEQ), if required, regarding the emission reduction potential of Transportation Control Measures (TCM) and Travel Demand Management (TDM) activities related to criteria pollutants and their precursors
- Coordinate and conduct air quality education, outreach and support programs that inform schools about EPA's school flag program and encourage them to take actions to protect the health of students, especially those with asthma
- Track and monitor progress towards achieving CMAQ traffic congestion and targets will established for non-SOV and total emissions reduction measures
- Annual Hours of Peak-Hour Excessive Delay per Capita on NHS system
- Percent non-SOV Travel
- Total Emissions Reduction
- Coordinate and organize Inter Agency Coordination Committee to develop Air Quality Conformity Analysis in partnership with various stakeholders.
- Attend workshops, conferences, and training to improve efficiency and skills for performing this task.
-
- Maintain, update, and use CRPC's database of interested citizens and businesses in Environmental Justice (EJ) areas to facilitate effective outreach to EJ populations
- Monitor, evaluate and implement EJ and Title VI compliance guidance and requirements for all CRPC plans, programs, and activities
-

Performance Measures

- Total emissions reduced
- Number of meetings with regional environmental partners
- Implementation of effective TDM strategies
- Gallons of natural gas used in the Baton Rouge non-attainment area

Results/Products

- Updated LAERC website
- Implementation of TDM strategies
- Education and outreach regarding air quality issues

Unified Planning Work Program 2023

- Meetings with interagency and other regional environmental partners
- Air Quality Conformity Analysis Final Document for MOVE 2046

Funding Summary

UPWP Task PL A-6 Budget	
Funding Source	Amount (\$)
FHWA Planning (PL)	\$31,148
FHWA Excess PL	
STP>200K	
Local Match	\$7,787
Total Budget	\$38,935
Labor	Amount (\$)
CRPC Staff	\$38,935
Consultants/Software/Other	\$0

Timeline

Q1 - Q4
Jul 1, 2022
to
June 30, 2023

- Coordinate with BRAC partners and other environmental partners to promote clean air in the Capital Region
- Monitor TIP and the MTP to ensure that any changes does not violate conformity
- Continue implementation of TDM and other TCM projects

Task A-7: Intelligent Transportation System (ITS)

The purpose of this task is to develop, maintain and enhance regional Intelligent Transportation System (ITS) activities to improve efficiency of the transportation network, public transit, emergency response, safety, and security in the CRMPO region.

Objectives

- To update and maintain the regional ITS architecture to ensure that ITS technologies are deployed in a manner that will allow for communication, interoperability, and compatibility amongst systems and entities
- To improve coordination among emergency response agencies, LADOTD, ATMC and other partners through incident management team meetings
- To pursue advanced data collection efforts to develop a data driven Congestion Management Process (CMP), check the performance of existing transportation system, and propose feasible strategies to improve the system performance
- To continue providing technical assistance to Capital Area Transit System (CATS) in enhancing the Automatic Vehicle Location (AVL) and implementing other transit ITS technologies to improve the performance, reliability, safety, and security of the public transit system

Previous Work/Accomplishments

- Monitored implementation of the Regional ITS Architecture. Coordinated and participated in discussions with LADOTD and consultant team to ensure implementation of the strategies outlined in the document
- Regularly attended incident management meetings
- Participated in the smart city committee meetings in EBR
- EDC5: Crowdsourcing for Operations at the Local Agency Level
- Coordinated with FHWA and EBR to set up a meeting to review an innovation exchange webinar on Crowdsourcing for the local agency level,
- Participated in the webinar and provided feedback; and,

Unified Planning Work Program 2023

- Participated in follow up meetings with FHWA and EBR to discuss the status of the City's utilization of Waze data.
- Extensively reviewed and familiarized with all the analytical tools available on NPMRDS RITIS website. Conducted several analyses to study Truck Travel Time Reliability and the establishment of PM3 targets
- Tracked the progress of various ITS related projects in the TIP and worked with the sponsoring entities for timely implementation of such projects
- Facilitated and participated in various discussions with regional transit providers and the East Baton Rouge Parish traffic engineering division to strategize on the implementation of signal preemption for planned bus rapid routes along Plank and Florida Blvd Corridors
- Kept track of the developments in the CAV industry by researching relevant news and current events as they become available. CRPC met with various ITS vendors and stakeholders to understand the new elements of the ITS technology that could help improve traffic flow and reduce congestion

Expected Work

CRPC will

- Continue to participate in the IM team meetings and coordinate IM/ITS activities with representatives from local and state law enforcement, emergency response agencies, LAOTD, FHWA, Louisiana Motor Transport Association (LMTA), Motorist Assistance Patrol (MAP), and other relevant entities to improve incident response and clearance times, and implement effective proactive counter measures
- Continue to coordinate with EBR and FHWA about implementation of EDC5 initiative for promoting crowdsourcing for operations at the local agency level
- Continue to provide technical support to CATS in enhancing and expanding the Automatic Vehicle Location (AVL) system and implementing other transit ITS technologies to improve the performance, reliability, safety and security of the public transit users and system
- Coordinate and consult with LADOTD ITS Division staff, the regional Federal Highway (FHWA) ITS representative, the City of Baton Rouge, and the consultants to utilize data from the Baton Rouge and the state ATMC's for performance monitoring and planning activities
- Continue to analyze the travel time data to check the performance of existing transportation system and propose feasible strategies to improve the system performance
- Pursue the use of Advanced Traveler Information Systems (ATIS) as a Travel Demand Management (TDM) strategy to improve the regional mobility by providing real time traffic and incident information to travelers to make alternative route/mode choice decisions
- Continue to track the developments in the CAV industry by researching relevant news and current events as they become available, and by staying in loop with the updates from DOTD's CAV team

Unified Planning Work Program 2023

- Work on developing a narrative of existing ITS infrastructure status to support CAV applications in the capital region and identify strategies to improve as part of the Long-Range Plan 2046 development
- Attend, if available, workshops, conferences, and training to improve efficiency and skills under this work program task
- Coordinate with LADOTD ITS consultant team to develop next generation of ITS project implementation based on TAC/TPC member priorities.

Performance Measures

- Number of Incident Management meetings attended
- Number of ITS projects implemented

Results/Products

- Congestion Trends Analysis and Dashboard
- CAV Technology Research Update
- ITS Team Meetings
- Updated ITS Plan for BR MPO region for FY 2023-2026.

Funding Summary

UPWP Task PL A-7 Budget	
Funding Source	Amount (\$)
FHWA Planning (PL)	\$42,512
FHWA Excess PL	
STP>200K	
Local Match	\$10,628
Total Budget	\$53,140
Labor	Amount (\$)
CRPC Staff	\$53,140
Consultants/Software	\$0

Timeline

Q1 - Q4
Jul 1, 2022
to
June 30, 2023

- Continue to coordinate with FHWA and EBR to implement EDC5 crowdsourcing strategies for improving operations
- Participate in quarterly incident management meetings
- Keep track of CAV updates and identify strategies for implementation in the Capital Region
- Coordinate with LADOTD ITS consultant to develop next generation ITS projects for the BR MPO region.

Task A-8: ADA and Title VI Planning

This task ensures that no person will, on the grounds of race, color, national origin, income, gender, age, or disability; as provided by Title VI of the Civil Rights Act of 1964 and the Civil Rights Restoration Act of 1987 (PL 100.259), be excluded from participation in, be denied the benefits of, or be otherwise subjected to discrimination under any program or activity.

Objectives

- Comply with the public involvement and environmental justice requirements of the federal and state regulations
- Avoid, minimize, or mitigate disproportionately high and adverse human health and environmental effects, including social and economic effects, on minority and low-income populations
- Provide specific opportunities for local citizens and citizen-based organizations to discuss their views and provide input on the subject areas addressed in plans, projects, or policies of CRPC
- Ensure full and fair participation by all potentially affected communities in the transportation decision-making process

Previous Work/Accomplishments

- Worked on reviewing the current Title VI Plan, updated the language in the document to reflect the current conditions
- Implemented the provisions documented in the Title VI plan
- Reviewed and analyzed Census ACS data pertaining to low income, minority, disabled, elderly, LEP populations as part of the Title VI update process. Developed color-coded maps depicting the results of the above analysis
- Continued to revise the MPO Public Participation Plan and other Title VI documents to ensure compliance with the FAST Act

Unified Planning Work Program 2023

- Assisted CATS in performing equity analysis for existing and proposed routes
- Worked with CATS to review and update their Title VI plan based on feedback from FTA triennial review
- Attended Title VI training, workshops, and conferences whenever available and feasible
- Researched FHWA Guidelines on Title VI technical assistance tools and presentations, and other peer title VI plans.
- Prepared report on how CRPC can incorporate Equity in the Long-Range Transportation Plan (MOVE 2046)

Expected Work

CRPC will

- Maintain, update, and use CRPC's database of interested citizens and businesses in Environmental Justice (EJ) areas to facilitate effective outreach to EJ populations
- Update plans to include additional general and transportation-related non-discrimination authorities
- Monitor, evaluate and implement EJ and Title VI compliance guidance and requirements for all CRMPO plans, programs, and activities
- Continue to update the CRPC Title VI Plan as needed and required
- Continue to prepare annual Title VI performance reports
- Update CRPC website to include a tab for updated Title VI and ADA information
- Establish CRPC regional Title VI and ADA complaint procedures
- Participate in regional initiatives to broaden the discussion and understanding of transportation's impact on disadvantaged citizens and identify ways to minimize, avoid or mitigate potential disproportionate adverse impacts on them
- Continue to hold all the meetings at accessible locations to disadvantaged citizens
- Continue to accommodate disadvantaged citizens at all the meetings and include support information with all the meeting notices
- Continue to enhance Title VI/ADA expertise by attending webinars, seminars, training sessions and conferences
- Collect, analyze, and update data on population, housing, employment, and other demographics and prepare maps depicting distribution of EJ and ADA citizens
- Perform Limited English Proficiency (LEP) analysis to understand the LEP demographic composition and distribution in the CRMPO area and assess the need to develop and implement a LEP plan

Unified Planning Work Program 2023

- Identify ways to plan, assess risks, limitations, and barriers, to be better prepared to mitigate potential adverse impacts that can disproportionately affect anyone that falls under one of our selected authorities
 - Continue to hold all the meetings at accessible locations to disadvantaged citizens
 - Continue to accommodate disadvantaged citizens at all the meetings and include support information with all the meeting notices
 - Continue to enhance Title VI/ADA expertise by attending webinars, seminars, training sessions and conferences
 - Collect, analyze, and update data on population, housing, employment, and other demographics and prepare maps depicting distribution of EJ and ADA citizens
 - Perform Limited English Proficiency (LEP) analysis to understand the LEP demographic composition and distribution in the CRMPO area and assess the need to develop and implement a LEP plan
 - Ensure all CRPC standard language used follows ADA/Title VI requirements
 - Coordinate with national, state, and regional stakeholders to implement potential bus stop accessibility improvements
 - Discuss a Shared Mobility Device Permit Plan for the Southeast Louisiana Region in accordance with city ordinance(s) which requires mobility companies to provide services in elderly, minority, and low-income areas
 - Begin communication to prioritize annual ADA requirements, updates, and improvements for the region, with a special focus on targeting areas with concentrations of disabled people and populations without access to a vehicle
 - Draft a Regional Policy Statement (RPS)
 - Acquire formal resolutions and/or proclamations of support from each participating governments in support of the (RPS)
 - Develop regional partnerships and projects, geared towards equal employment opportunities, affirmative employment program, reasonable accommodation for people with disabilities, and enforcement of Federal civil rights laws

Performance Measures

- Updated Title VI/Environmental Justice/ADA database
- Annual Title VI performance report
- Increased outreach targeting disadvantaged population

Results/Products

- Updated Title VI Plan
- Annual Title VI Report
- Updated data and maps of disadvantaged population demographics

Unified Planning Work Program 2023

- Direct education and outreach targeting disadvantaged populations
- Regional Policy Statement
- Resolutions/Proclamations from Eleven regional parishes: Ascension, East Baton Rouge, East Feliciana, Iberville, Livingston, Pointe Coupee, St. Helena, Tangipahoa, Washington, West Baton Rouge, and West Feliciana
- CRPC Regional ADA/Title VI Complaint and Investigation Procedures
- Updated CRPC website
- An updated list of all general and transportation-related non-discrimination authorities to enforce regionally to include:

Current Authorities:

- Title VI of the Civil Rights Act of 1964 (42 USC 2000d et seq.)
- Civil Rights Restoration Act of 1987
- The National Environmental Policy Act of 1969 (NEPA)
- Executive Order #12898 (Environmental Justice)

Updated Authorities

- Section 162 (a) of the Federal Aid Highway Act of 1973 (23 USC 324)
- Age Discrimination Act of 1975
- Section 504 of the Rehabilitation Act of 1973
- Americans With Disabilities Act of 1990 (ADA)
- 49 CFR Part 21
- 23 CFR Part 200
- U.S. DOT Order 1050.2
- Executive Order #13166 (Limited-English-Proficiency)

Funding Summary

UPWP Task PL A-8 Budget	
Funding Source	Amount (\$)
FHWA Planning (PL)	\$30,900
FHWA Excess PL	
STP>200K	
Local Match	\$7,725

Unified Planning Work Program 2023

Total Budget		\$36,625
Labor	Amount (\$)	
CRPC Staff	\$36,625	
Consultants/Software	\$0	

Timeline

Q1 - Q4
Jul 1, 2022
to
June 30, 2023

- Continue to accommodate disadvantaged citizens in the planning process.
- Review and update Title VI analysis and plan as needed
- Continue to enhance Title VI/ADA expertise by attending webinars, seminars, training sessions and conferences.

Task A-9: Model Enhancement

The purpose of this task is to continue to review and analyze existing travel demand and air quality models to determine feasible enhancements to the modeling procedures that are used in the CRMPO study area.

Objectives

- To conduct demographic analysis to determine both the baseline and future land use and economic development patterns in the CRMPO study area and use the results of this analysis in developing or refining the regional travel demand model
- To refine in-house model run capabilities and research state-of-the-art practices in travel demand modeling and the capabilities to simulate interaction of land use and regional transportation system
- To refine in-house model run capabilities and research state-of-the-art practices in air quality modeling and the capabilities to simulate interaction of proposed transportation improvements and air quality
- To perform air quality, regional travel demand, and micro simulation model runs for existing and future projects as requested

Previous Work/Accomplishments

- CRPC completed developing a Tour-based Model Update Project in FY 2021 and includes the following new modeling functions and highlights:
 - The primary data source for household, person and trip patterns update for the model is the most recently completed MPO Household Travel Survey along with MPO collected and maintained vehicle class and volume data will be used in the base year model calibration/validation.
 - New modeling network, developed using centerline-based roadway network that will be able to match all published maps closely (when overlaying to existing DOTD/FHWAs' functionally classified map or website maps, our current modeling street network has big gaps with all published maps)
 - Besides on the routine model update, these modeling analysis functions were added/included: Toll way, HOV lanes and HOT lanes analysis to meet the region's increased needs.
 - The Consultant projected new EE/EI/IE trips and matrix based on HTS, Counts and LADOTD's data
 - Because of collected vehicle class data available, Freight/truck modeling analysis was added for modeling analysis as well, and
 - The new model will create additional output data from entire boundary of five parishes for use as inputs for air quality conformity analysis.
 - Rather than approximate stops, real stops for transit routes will be built in the mode choice model and validated with transit ridership for transit trip forecast and analysis.
 - Staff have worked with consultants with meetings for project progress. The base year employment and population data for model were analyzed and compared with the previous MTP 2042 Plan.

- Staff reviewed the new modeling network and TAZ s and made suggestions and comments to the network and TAZs as well as base year (2020) employment and population data provided by consultant for MOVE2046, Revisions and changes were incorporated.
- Per request from DOTD on modeling for Mississippi River Bridge and location analysis, completed six modeling analysis with two scenarios – New West Expressway Scenario vs Conventional Scenario (using up-graded existing roadways). Under each scenario, bridge locations along Mississippi River in the following options were coded to network and analyzed accordingly for each of two scenarios:
 - North Option (Brusly to Baton Rouge),
 - Middle Option (Plaquemine to St. Gabriel); and,
 - South Option (South of Plaquemine to St. Gabriel).
- Provided modeling technical assistance to the MOVEBR project implementation teams
- Provided modeling technical assistance to DOTD and executed various model runs for I-10 widening project in Baton Rouge

Expected Work

CRPC will

- Implement CRPC Model Update based on MOVE 2046 Plan.
- Continue to update and refine databases of regional growth and transportation networks for the preparation of future MTP updates and amendments associated with the existing MTP
- Continue to refine in-house model run capabilities and research the state-of-the-art practice in travel demand modeling and the capabilities to simulate interaction of land use and regional transportation system
- Continue to provide modeling technical assistance to entities and transportation partners are needed
- Continue staff capacity building with MOVES 3 model training opportunities.
- Perform regional travel demand model runs for alternative or sub-area analysis as requested
- Perform air quality analysis and quantify emission benefits for projects as requested. CRPC staff will try to keep track of other projects/efforts being implemented in region and quantify air quality emission reductions for applicable projects
- Conduct Macro and Micro simulation traffic analyses
- Attend workshops, conferences, and training to improve efficiency and skills for performing this task

Performance Measures

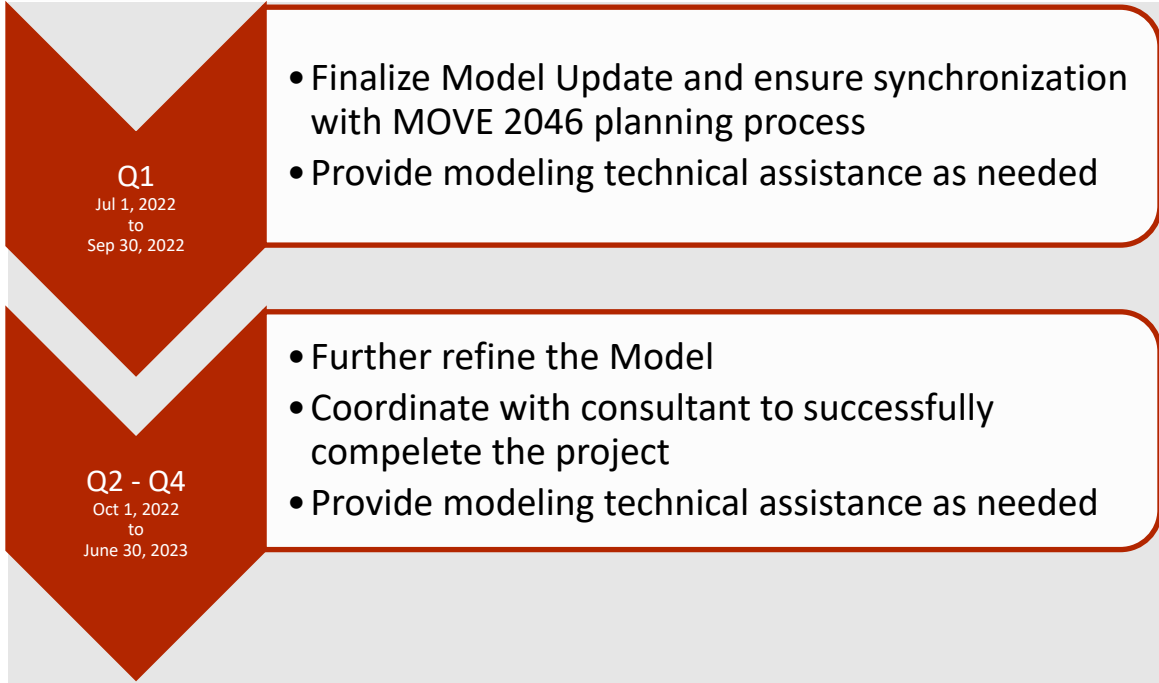
- EPA air quality latest model MOVES runs
- Regional Travel Demand Model runs

Results/Products

- Updated Travel Demand Model
- Modeling technical assistance

Funding Summary

UPWP Task PL A-9 Budget	
Funding Source	Amount (\$)
FHWA Planning (PL)	\$1,312
FHWA Excess PL	
STP>200K	
Local Match	\$328
Total Budget	\$1,640
Labor	Amount (\$)
CRPC Staff	\$1,640
Consultants	\$0

Timeline

Task A-10: Safety and Security Planning

The purpose of this task is to reduce the human and economic toll on the region's multi-modal transportation system due to traffic crashes through widespread collaboration and an integrated 4E (Engineering, Enforcement, Education and Emergency Response) approach.

Objectives

- To ensure safety is a major goal, with commitment to it at the highest level identify the needed safety improvements in the transportation system and identify performance measures
- To collaborate with regional safety stakeholders and keep them engaged throughout the planning process
- To collect and analyze safety data to identify specific transportation safety areas, issues, and feasible solutions
- To routinely monitor safety programs and projects to evaluate successes or identify course corrections, assess progress towards performance targets, and use tracking information to continually revise and refine the planning process
- To work with state and federal agencies and address multi-modal security planning

Previous Work/Accomplishments

- Analyzed MPO crashes from 2016-2020 (5yrs) to develop a new five-year safety report
- Staff performed the following tasks as part of EBR Local Road Safety Plan:
 - Developed timeline and SOW,
 - Drafted methodology for High Potential for Safety Improvements,
 - Created unique signalized and unsignalized intersection layers,
 - Created major/logical intersections layers,
 - Updated the crash universe based on updated intersection layers,
 - Developed methodology for ranking and prioritizing intersections and segments,
 - Ranked and prioritized signalized, unsignalized, and segment based on the above ranking methodology; and,
 - Developed maps of the prioritized locations and overlaid them on layers of MOVEBR projects, EBR Bike/Ped plan layers etc.
 - Overlaid prioritized locations with future TIP/STIP Projects
 - Prepared table of attributes for high priority locations in order to continue with the Pre-Application step for submitting prioritized locations

Unified Planning Work Program 2023

- Downloaded and provided all crashes within MPO for MOVE2046
- FY2021 Safety Target (2016-2020)
- Staff downloaded all crashes that occurred within MPO five Parishes from 2016-2020 for analysis of 2021's target,
- Improved upon last year's method for analyzing and setting the Capital Region's MPO's 2021 safety targets by tying it to the safety goal in the Regional Strategic Highway Safety Plan of "Halving the 2009's Number of Fatality and Severe Injury Crashes by 2030": and,
- Developed documentation and presentation for presenting the 2021 safety targets details to the MPO's TPC/TAC for their review and approval.
- Aided the Capital Region Transportation Safety Coalition (CRTSC) with various activities under each of the emphasis areas
- Staff completed Road Safety Fundamental Web-Based Training (WBT) by National Highway Institute.

Expected Work

CRPC will

- Coordinate and participate in the Capital Region Transportation Safety Coalition (CRTSC) meetings and outreach events. Support CRTSC in the implementation of regional safety action plans to improve safety in the capital region. Participate in the development of Parish safety plans
- Continue to establish safety as a decision factor for selection, scoring and ranking of transportation projects in the Congestion Management Process (CMP), Transportation Improvement Program (TIP), Metropolitan Transportation Plan (MTP), and other planning processes or documents
- Continue to collaborate with LADOTD, collect crash data and analyze the data to identify high crash intersections, corridors, and other hot spots for all modes of travel. It is important to identify the crash locations for all modes even if some modes do not have a high number of crashes
- Continue to participate in LADOTD Road Safety Assessment (RSA) process to identify road safety deficiencies and risk characteristics and propose cost effective counter measures to improve safety
- Continue to conduct aggressive Bicycle & Pedestrian Safety Outreach and develop materials to assist Parishes, Municipalities, and citizens to improve bike and pedestrian safety
- Continue to provide technical support to CATS in enhancing and expanding the Automatic Vehicle Location (AVL) system. AVL system provides benefits to transit users through reduction in wait times and increasing their feeling of security
- Monitor safety performance and evaluate safety programs and policies by tracking the progress of the regional safety improvements and using quantitative data analysis methods

Unified Planning Work Program 2023

- Continue to collaborate with regional safety partners and stakeholders and promote complete streets policies, and regional safety priorities and objectives outlined in the State Highway Safety Plan (SHSP)
- Coordinate with Local Technical Assistance Program (LTAP) and LADOTD to promote Local Road Safety Program (LRSP) and Safe Routes to Public Places programs to increase local community participation in roadway safety and to develop and implement road safety improvements on public roads under parish or municipal jurisdiction. CRPC staff will provide technical assistance to the local governments applying for these safety programs
- Participating in the State's Traffic Records Coordinating Committee, Incident Management meetings
- Continue to work with Federal and State agencies, and other regional stakeholders in addressing security planning policies and activities
- Attend, if available, workshops, conferences, and training to improve efficiency and skills under this work program task
- Complete a Local Road Safety Plan for Livingston Parish by duplicating the process used in completing the Ascension and East Baton Rouge Local Road Safety Plans

Performance Measures

- Identification of high crash locations through crash data analysis
- Number of regional safety stakeholder meetings, workshops and conferences attended by CRPC staff
- Implementation of Regional Safety Plan

Results/Products

- Crash data analysis and report identifying multi-modal high crash locations
- Coordination with various regional safety stakeholders on various safety programs and initiatives
- Technical assistance to CATS for expanding and enhancing AVL system and other safety and security initiatives
- Regional Safety Plan and Performance Measures for FY 2022

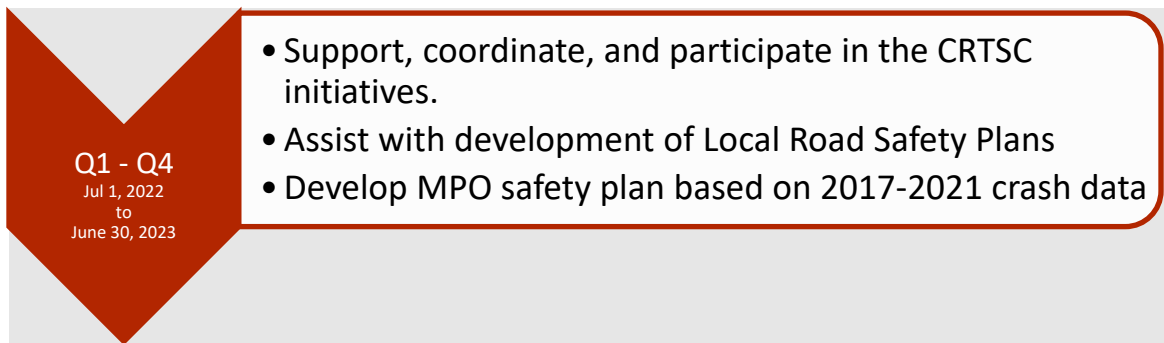
Funding Summary

UPWP Task PL A-10 Budget	
Funding Source	Amount (\$)
HWA Planning (PL)	\$39,108
HWA Excess PL	
STP>200K	

Unified Planning Work Program 2023

Local Match	\$9,777
Total Budget	\$48,885
Labor	Amount (\$)
CRPC Staff	\$48,885
Consultants/Software	\$0

Timeline



Task A11: Development of Transportation Plans & Programs

The purpose of this task is to evaluate, support, analyze and implement multi-modal transportation plans and programs that foster accessibility, mobility, safety, and other FAST Act as well as IIJA related planning factors.

Objectives

- To promote programs that preserve and use the existing transportation facilities more efficiently
- To develop plans, programs and projects that address movement, safety, and security of freight on a multi-modal scale
- To develop plans, programs and projects that address movement, safety, and security of passengers on a multi-modal scale
- To study and understand the overall social, economic, energy, and environmental effects of transportation planning decisions

- To improve communication and foster collaboration among various freight and passenger multi-modal stakeholders

Previous Work/Accomplishments

- At the directions from the Louisiana Supply Chain Transportation Council, staff utilized the LADOTD's travel demand model and analyzed the impacts of Sunshine bridge to Freight/Trucks and roadway networks, Analysis results were documented with PPT presentation.
- At request from DOTD's MRB project team, provided MRB modeling results data with proposed three new bridge locations done in CRPC to the MRB study team. For simulation purposes MPO conducted vehicle classification counts were also provided to the MRB project team.
- Provided LSU with GIS database about the MPO population growth and projections in census BG level at years of 2000,2010,2022 and 2032
- Per request from DOTD on modeling for Mississippi River Bridge and location analysis, completed six modeling analysis with two scenarios – New West Expressway Scenario vs Conventional Scenario (using up-graded existing roadways). Under each scenario, bridge locations along Mississippi River in the following options were coded to network and analyzed accordingly for each of two scenarios:
 - North Option (Brusly to Baton Rouge),
 - Middle Option (Plaquemine to St. Gabriel); and,
 - South Option (South of Plaquemine to St. Gabriel).
- Pavement Condition Collection
- Worked on developing a Scope of Work for second of data collection,
- Reviewed DOTD comments and refined the SOW,
- Researched the option of issuing a sole source contract for second round data collection; and,
- Coordinated and compared with DOTD's SOW to ensure that there is no duplication of efforts.
- CRPC initiated an annual CEDS analysis and report considering various economic impacts related to COVID-19 and cascading disasters in 2020/2021.
- Provided technical assistance and guidance to local government project sponsors for STBG>200k projects as they advanced through the project development process
- Provided technical assistance to and participated in meetings on various ongoing projects in the Capital Region such as but not limited to:
 - Baker Transit Facility/Park and Ride Phase II,
 - Vanpool Study,
 - Plank-Nicholson BRT project,

- MOVE Ascension Comprehensive and Transportation Plans,
- New Mississippi Bridge analysis to support Capital Area Bridge District; and,
- East Baton Rouge Local Road Safety Plan Implementation.
- Worked on updating TIP project amendments into the Decision Lens platform.

Expected Work

CRPC will

- Continue to analyze, support, and implement any transportation projects that increase connectivity, accessibility, mobility, safety, and security in the region
- Continue to meet and solicit with local elected officials, transportation stakeholders, and public at large to identify critical transportation needs and provide technical support as and when needed
- Continue to coordinate with local governments and develop a regional Pavement Management Strategy (PMS) to collect pavement condition information, analyze the data and efficiently preserve the transportation system
- Analyze the effect of transportation planning on land use and development, and the consistency of transportation plans and programs with short-term and long-term development plans
- Establish local match agreements with all MPO municipalities and parishes that agreed to participate in the Pavement and Asset Data Collection project
- Work with all the transit agencies in the region to expand, enhance and to increase the use of such services
- Continue to assist and support local agencies with Transportation Alternatives Program (TAP), Safe Routes to Public Places, Louisiana Roads Safety Program and any other federal or state programs
- Analyze the issues with and identify the needs for connectivity, safety, security, and accessibility of all the transportation modes (automobiles, transit, bike, and pedestrian)
- Analyze preservation of right-of-way for construction of future transportation projects
- Coordinate with LADOTD to track performance targets for the Interstate System and non-Interstate NHS pavement condition measures and NHS Bridge Condition measures
- Attend, if available, workshops, conferences, and training to improve efficiency and skills under this work program task
- Travel to International Conference on Resilience to Natural Hazards and Extreme Weather Events.
- Continue working with updating project amendments in the Decision Lens platform for TIP FY 2023-2026.

Performance Measures

- Number of meetings with elected officials and stakeholders
- Number of parishes with data driven maintenance programs

Results/Products

- Monitor targets for pavement and bridge performance measures
- Data driven pavement maintenance programs
- Technical assistance to local agencies regarding various federal/state transportation programs
- Identify Project list based on “Call for Projects” for Planning Grants specific to local jurisdiction needs.

Funding Summary

UPWP Task PL A-11 Budget	
Funding Source	Amount (\$)
FHWA Planning (PL)	\$261,360
FHWA Excess PL	
STP>200K	
Local Match	\$65,340
Total Budget	\$326,700
Labor	Amount (\$)
CRPC Staff	\$102,700
Consultants/Software	\$224,000

Timeline

Q1 - Q4
Jul 1, 2022
to
June 30, 2023

- Evaluate, support, analyze and implement multi-modal transportation plans and programs that foster accessibility, mobility, safety and other FAST Act planning factors

Task A12: Multi-Modal Freight Transportation

The purpose of this task is to study regional freight related issues and better link freight movement with regional economic development strategies as outlined in the CEDS. Evaluate, support, analyze and implement multi-modal transportation plans and programs that foster accessibility, mobility, safety, and other FAST Act planning factors.

Objectives

- To improve movement, safety, and security of national and international freight movement across all modes
- To set and track regional truck travel time reliability performance measures as required by FHWA
- To evaluate regional issues with first/last mile delivery and seek solutions to improve truck transportation
- To establish a freight data collection framework
- To improve communication and foster collaboration among freight stakeholders from all modes

Previous Work/Accomplishments

- Louisiana Supply Chain Transportation Council
- MPO has conducted vehicle classification counts that help in the freight analysis especially during the 2020 Pandemic period when MPO used the vehicle classification counts for comparing the impacts to freight traffic on selected roadways.
- Planned, organized, and executed meetings of the Louisiana Supply Chain Transportation Council,

Unified Planning Work Program 2023

- Planned, organized, and executed conference calls for the Executive Committee of the Louisiana Supply Chain Transportation Council,
- Worked with OCD and LSU to secure funding for the Supply Chain Transportation Council's report to the legislature; and,
- Submitted report to the Louisiana legislature and DOTD] with findings and recommendations on making Louisiana's infrastructure and supply chain more resilient, as called for in SCR 110
- Hosted weekly conference calls in March through June to discuss COVID-19 related supply chain issues, and to share information and resources.
- Monitored and compiled freight impacts due to Hurricanes Laura
- Presented on the work of the Louisiana Supply Chain Transportation Council and Louisiana's recovery efforts from the flood of 2016 at the Transportation Research Board's 2nd International Conference on Resilience to Natural Hazards and Extreme Weather Events
- Continued to participate in FHWA's Freight and Fuel Transportation Optimization Tool (FTOT) Pilot study. Participated in meetings with participants from other MPOs in Louisiana and private sector participants
- Participated in VOLPE's Resilience/Disaster Recovery Metamodeling Feedback Group

Expected Work

CRPC will

- Continue to analyze, support, and implement any transportation projects that increase multimodal connectivity, accessibility, mobility, safety, and security in the region
- Continue to meet and solicit with local elected officials, transportation stakeholders, and public at large to identify critical freight transportation needs and provide technical support as and when needed
- Coordinate to establish regional multi modal freight priorities and performance measure targets
- Develop a regional freight network within the Baton Rouge urbanized area
- Continue to maintain, administer, and direct the Louisiana Supply Chain Transportation Council (SCTC)
- Continue to identify potential resources for the SCTC to continue its work
- Continue to work with VOLPE as part of a technical advisory committee a on a prototype Resilience and Disaster Recovery Metamodel (RDRM) based on travel demand modeling (TDM) to help metropolitan/regional planning organizations (M/RPOs) and State DOTs to evaluate the return on resilience investments across a range of future scenarios and hazard conditions
- Attend, if available, workshops, conferences, and training to improve efficiency and skills under this work program task

- Develop a Regional Freight Transportation Profile in line with the Statewide Freight Plan currently advertised focusing on supply-chain, 3PL logistics and port planning.

Project Description: Regional Freight Profile

The purpose of this task/project is to compile a freight profile that will include the following sections:

- An overview of the regional freight transportation system, including a brief history, major developments, and current status.
- A description of major facilities by mode, including but not limited to airports, rail lines and terminals, highways, pipelines, and distribution warehousing centers.
- A summary and detailed analysis, by mode, of
 - Freight volumes,
 - Major commodities,
 - Direction of freight flows (import versus export),
 - Local consumption of imported goods versus throughput.
- A summary, analysis, and description of the role of third-party logistics (3PL) providers, freight forwarders and brokers in the regional freight transportation system.
- Recommendations and procedures for Baton Rouge MPO staff to replicate the freight profile in future years, including detailed data citations, analysis methods, and stakeholder contact information.

The goal of the Freight Profile is to set forth a vision to develop a well-balanced transportation system that promotes futuristic supply chain networks and logistics to enhance economic development and excellent quality of life in the BRMPO area.

Project Scope

The scope of work will include the following outline of the tasks.

Task 1.0 Project Schedule, Work Plan, Project Management

Task 2.0 Public Involvement Plan

Task 2.1 – Outreach Plan, Branding, Process and Methodology

Task 2.2 – Stakeholder Outreach and Public Involvement

Task 3.0 Existing Conditions Review

Task 3.1 Regional Freight, Supply Chain & Logistics, and Travel Patterns

Task 3.2 Regional Multi-Modal Transportation Network Review

Task 3.3 Regional Freight related Transportation Safety Review

Task 3.4 Regional Congestion and System Performance Review

Unified Planning Work Program 2023

Task 4.0 Develop Guiding Principles, Goals, Objectives, and Performance Measures

Task 5.0 Identify Quantitative Data Sources/Analytics

Task 6.0 2046 Freight System Needs, Improvement Strategies, and Scenarios

Task 6.1 Compile regional freight capacity needs

Task 6.2 Scenario Planning and Alternative Networks Evaluation

Task 6.3 Identification of Key Issues

Task 6.4 Coordination with Statewide Freight Planning Study

Task 7.0 Performance Measure Matrix

Task 8.0 Freight Network Recommendations/Strategic Framework

Task 9.0 Funding Sources and Next Steps

The total project duration is around 18 - 24 months. It is anticipated that 12 months of the project work will be accomplished in FY 2023 and the remainder will be done in FY 2024. The total project cost is max. \$300,000. The budget below only shows the portion that will be spent in FY 2023.

Performance Measures

- Number of meetings with elected officials and stakeholders
- Number of SCTC meetings
- Monitor Freight Travel Time Reliability Performance Measure

Results/Products

- Develop freight data collection framework.
- Regional freight network map for Baton Rouge Urbanized Area
- Work with FHWA to establish a regional supply chain modeling tool
- Develop Regional Freight Profile
- SCTC report

Funding Summary

UPWP Task PL A-12 Budget	
Funding Source	Amount (\$)
FHWA Planning (PL)	\$166,464

Unified Planning Work Program 2023

FHWA Excess PL	
STP>200K	
Local Match	\$41,616
Total Budget	\$208,080
Labor	Amount (\$)
CRPC Staff	\$58,080
Consultants/Software	\$150,000

Timeline

Q1 - Q4
Jul 1, 2022
to
June 30, 2023

- Coordinate and Administer Louisiana Supply Chain Transportation Committee meetings
- Coordiante with VOLPE on the FTOT tool implemtation
- Monitor Freight related Transportation Performance Measures (TPM3)
- Develop a Regional Freight Profile

Task A13: Data Development and Maintenance

The purpose of this task is to collect, maintain and analyze regional information on all topics including but not limited to, census, land use and related data that will be needed for regional demographic forecasting, transportation planning, land use planning, air quality planning, emergency planning, Title VI, and economic development efforts.

Objectives

- To be central repository of regional census, land use, transportation, transit, bicycle and pedestrian, and any related datasets
- To assist member governments in developing and coordinating a comprehensive GIS database
- To analyze and create various static and web-based maps that will assist on diverse topics including but not limited to transportation, land use, safety, air quality and title VI planning

Previous Work/Accomplishments

- Staff prepared/collected MPO five-parish's GIS roadway centerline network and recent roadway FC, GIS based land-use database and parcels datasets, vehicle classification counts, population, and employment in GIS format. Staff also collected existing and future land use GIS database created and adopted by the City of Central, and their Comprehensive Plan. These data were also provided to the consultant for 2046 MTP and modeling.
- For the reference of Freight Model development and MPO Freight Chain analysis with impact of Sunshine Bridge, Staff requested DOTD and obtained DOTD's Statewide model.
- Created traffic counts database and shared the counts on CRPC's website for entities and public download.
- GIS location maps were created for consultant field review and traffic data collection.
- Conducted project progress meetings for questions encountered in the field during the counting
- Provided vehicle classification counts on vary roadways based on the requests from communities.
- Provided GIS analysis for comparing traffic impacts with vs. without widening along LA 37 (Sullivan Road to Liberty).
- Provided technical assistance to Ascension Parish regarding population and socio-economic data projections to support MOVE Ascension and Ascension Parish Comprehensive Plan projects
- Developed SOW and RFP, advertised, and selected a consultant for conducting regional traffic counts in 2020, 2021, and 2022
- Conducted detailed review and developed map showing the locations where the new counts need to be collected and shared the same with the consultant

Unified Planning Work Program 2023

- Continued to provide data and mapping technical assistance to the Cities of Denham Springs and Baker to aid in their recovery planning process
- Finalized GIS maps for Darlington Reservoir and Alternative Dam-Locations/Amite River. The GIS analysis for volume/capacity and surface of reservoir is being studied currently
- Continued to provide assistance to local governments by providing GIS support for land use and zoning maps
- Finalized Title VI maps for inclusion in the updated report
- Transferred shapefiles to the New Drive using a standard projection
- Added and/or completed existing metadata for transferred shapefiles
- Downloaded and reformatted ACS 2020 data for Census Block Groups in Louisiana
- Requested new building permits, land use, and zoning data from various regional and local governments
- Reorganized the servers GIS file structure and provided guidelines for storing and saving data
- Authored two documents in reference to secession planning – one regarding the GIS storage structure and the other focusing on GIS licensing and software availability
- Worked on several internal and external GIS data requests
- TIP maps,
- Mapping WBR building permits data,
- Transit System maps,
- Web maps,
- Crash data analysis,
- 2019 Employment Data Analysis; and,
- Traffic Count Maps.
- Staff continued evaluating demographic and employment data in support of the Comprehensive Economic Development Strategy (CEDS) to incorporate, where appropriate goals of MOVE2042 to ensure better coordination between land use, economy, and the transportation network
- Worked with Louisiana Clean Fuels to update proposed alternative energy corridor maps for the Capital Region and the State of Louisiana. Developed and updated proposed EV charging corridor maps for East Baton Rouge Parish
- Staff reviewed and analyzed various databases for establishment of targets for TPM1, TPM2, and TPM3 performance measures
- Initiated work on implementing a second round of pavement and asset data collection

- Centralized GIS database and GIS Portal
- Formed an internal working group to brainstorm, work and develop a centralized internal database and GIS portals for CRPC and smaller municipalities,
- Developed the architecture schematic of the future database and portal setup; and,
- Researching all the current databases and preparing a master list of all the GIS files and locations.
- Staff established contact with the consultant for the traffic count of the year 2022.

Expected Work

CRPC will

- Continue to collect, maintain, and analyze regional information on topics including but not limited to, census, land use and related data that will be used in regional demographic forecasting, transportation planning, land use planning, air quality planning, emergency planning, Title VI, and economic development effort
- Coordinate with local governments that do not have GIS system and assist them in developing GIS databases of their comprehensive/master plans and any other data they need
- Coordinate with all the local governments and develop regional land use geodatabases
- Continue developing various cartographic maps for planning and presentation purposes
- Enhance the web-based GIS mapping tool by making it more efficient and publishing additional maps
- Update the traffic count map and make it available on the website
- Obtain updated crash data, geocode, and perform detailed analysis to identify high crash corridors and intersections, bicycle and pedestrian crash locations, locations by injury type etc. and assist in safety planning
- Update roadway, transit, bicycle/pedestrian GIS data
- Coordinate with various agencies such as LAGIC, FEMA, USGS, DHS etc. to understand and use their data for regional planning purposes
- Implement a new internal data framework including geodatabase management and layer descriptions.
- Develop an internal document data/GIS document for succession planning.
- Develop an ArcGIS Online framework for CRPC and the municipalities within the region. The framework will be used to showcase and store the data from around the region.
- Continue working with the consultant for traffic count and quality control.

Unified Planning Work Program 2023

- Attend, if available, workshops, conferences, and training to improve efficiency and skills under this work program task

Performance Measures

- Compilation of regional land use data and maps
- Enhanced web-based GIS interface
- Organized and structured geodatabases
- Number of local entities assisted in developing GIS databases of comprehensive plans

Results/Products

- Cartographic maps
- Organized and structured geodatabases
- Web based GIS interface
- Regional land use GIS data
- Data/GIS succession planning document
- Updated roadway, transit, and bicycle/pedestrian data
- Updated traffic count map

Funding Summary

UPWP Task PL A-13 Budget	
Funding Source	Amount (\$)
FHWA Planning (PL)	\$164,680
FHWA Excess PL	
STP>200K	
Local Match	\$41,170
Total Budget	\$205,850
Labor	Amount (\$)
CRPC Staff	\$205,850
Consultants	\$0

Timeline

Q1 - Q4
Jul 1, 2022
to
June 30, 2023

- Collect and obtain planning related datasets from variety of sources
- Analyze and visualize the data for inclusion in various planning products especially Fugro Asset and Pavement data, 5-Parish PERmit data, utility data and related datasets.
- Develop and maintain centralized geodatabase and implement GIS web portals

Task B1: Land Use, Socio-Economic and Environmental

The purpose of this task is to collect, maintain and analyze regional land use, socio-economic and environmental data that will be used in regional demographic forecasting, transportation planning, land use planning, air quality planning, emergency planning, Title VI, and economic development efforts.

Objectives

- To collect, maintain and analyze regional land use, socio-economic and environmental data to support CRPC's program initiatives and work tasks elaborated in this Unified Planning Work Program (UPWP)
- Participate and provide input to parishes and larger municipalities in the development of local comprehensive plans
- Provide guidance and technical assistance to smaller municipalities on land use and zoning issues

Previous Work/Accomplishments

- Worked with OCD, GOHSEP, and FEMA as part of the Louisiana Resilient Recovery Initiative to organize outreach meetings with parish officials in the Amite Watershed and put on the Amite Watershed Symposium
- Provided data and technical assistance to the City of Denham Springs in their recovery planning process. Worked with the Mayor of Plaquemine to address land use and zoning concerns. Began working with Plaquemine Main Street on a strategic plan that considers multi-modal transportation

Unified Planning Work Program 2023

and connections to their downtown, including train/railroad safety and connecting to their planned river levee bike/ped trail

- Facilitated several land use technical training courses for Planning Commissioners in the Capital Region
- Provided land use and zoning technical assistance to the City of Baker planning commission. Met with the City of Baker to provide guidance on their strategic planning initiatives and helped update their zoning map to include newly annexed areas and to include recent zoning amendments
- Conducted and participated in several meetings with Denham Springs Main Street revitalization group. Working with Louisiana Main Streets and AIA, CRPC helped the city of Denham Springs host a charrette for the new city hall site which is a key downtown property. Developed a strategic plan for civic use and connectivity of the new city hall parking lot which adjoins the Main Street area and provides bike/ped connectivity to future redevelopment areas near downtown
- Staff meet regularly with local governments to evaluate future growth trends/needs for the community and begin land use planning discussions and provide technical assistance
- Began researching community and public partners to expand potential broadband access and adoption.
- Staff participated in an LSU Inland from the Coast cross disciplinary design event which focused on responding to various growth scenarios in the Amite River Basin watershed to identify ways to re-think current development patterns to respond to future needs.
- CRPC staff began serving on the Land Use Planning and Building subcommittee of the Louisiana Climate Initiatives Task Force.
- Three CRPC staff members attended a 4-day Certified Flood Plain Manager training course hosted by FEMA and OCD/DOTD
- Staff attended 2 days Just-in-Time Recovery Management training hosted by FEMA and OCD. This training is related to post disaster recovery needs for local governments.
- CRPC participated in a RSF 1 (Community Planning and Capacity Building) FEMA/OCD led call with disaster recovery partners. This is a series of ongoing meetings to help coordinate disaster recovery efforts associated with 2020 hurricanes and COVID-19.

Expected Work

CRPC will

- Provide technical assistance to Parishes and Municipalities that need help with planning, zoning, or developing and maintaining electronic/GIS databases of their comprehensive/master plans

Unified Planning Work Program 2023

- Coordinate with local governments to develop and maintain a regional land use and socio-economic database
- Continue to gather input about local growth projections from the member governments to establish future control totals and develop realistic demographic forecasts for future planning purposes
- Download the latest census data sets as they become available, analyze, and organize into user-friendly products making them available to member governments and the public. A comparative analysis with the previous decennial census data will also be performed to understand the shifts and trends of various socio-demographics attributes
- Coordinate and provide disaster recovery and resiliency planning assistance to local governments
- Gather and maintain a repository of environmental data from various local, state, and federal sources including but not limited to the Environmental Protection Agency (EPA), Louisiana Department of Environmental Quality (LDEQ), Federal Emergency Management Agency (FEMA) and Governor's Office of Homeland Security and Emergency Preparedness (GOHSEP)
- Research and provide technical assistance in cooperation with FHWA and LDOTD regarding Value Capture techniques appropriate for local government use under the EDC-5 initiative
- Solicit third party professional or member government services to implement portions of this task, if necessary

Performance Measures

- Number of member governments assisted with planning related projects/issues
- Number of Planning Commissioner training conducted

Results/Products

- Planning Commissioner training
- Planning assistance to member governments

Funding Summary

UPWP Task PL B-1 Budget	
Funding Source	Amount (\$)
FHWA Planning (PL)	\$117,632
FHWA Excess PL	
STP>200K	
STIC	

Unified Planning Work Program 2023

Local Match	\$29,408
Total Budget	\$147,040
Labor	Amount (\$)
CRPC Staff	\$123,540
Consultants, Travel, Software	\$23,500

Timeline

Q1 - Q4
Jul 1, 2022
to
June 30, 2023

- Conduct quarterly planning commissioner training
- Provide technical support to local governments on planning and zoning related issues
- Research and develop compendium of value capture techniques

Task B2: Transportation System - Inventory & Performance Monitoring

The purpose of this task is to collect, maintain and analyze street inventory maintenance data to improve safety, reliability, efficiency, and extend the life of the transportation system in the CRMPO region.

Objectives

- To collect system wide pavement condition data in coordination and collaboration with the local agencies and LADOTD to quantitatively evaluate road conditions and efficiently improve the life and performance of the transportation system in the region
- To collect real time traffic conditions using advanced data collection methodologies to measure system performance, identify congested corridors and develop a data driven congestion management process
- To collect, maintain and analyze system-wide traffic count data through in-field collection and coordination with local agencies and LADOTD

Previous Work/Accomplishments

- Collected counts of bicyclists and pedestrians at various locations in the MPO region utilizing Eco Counter
- Initiated three-year Regional Traffic Counting Project. The total budget for this project is \$255K. The purpose of this project is to collect:
 - Volume counts help understand the actual vehicle counts on our Capital Region roadway network,
 - Vehicle Classification Counts help understand the distribution of various vehicle types from large trucks to passenger cars on our Capital Region network,
 - Support updating and refining MPO transportation model; and,
 - Also helps in realistically quantifying transportation related air quality emissions in our region.
- Current Status of the project:
 - Developed and Advertised RFP for selection of a new contractor,
 - Reviewed the proposals and made a recommendation to the TPC,
 - FY 2022 will be the last year of this three-year Regional Traffic Counting Project
 - Quality Counts (QC) were selected as the contractor to implement this project,
 - Regular data collection was paused due to the COVID-19 stay at home order; and,
 - Conducted special vehicle classification counts to understand the impact of COVID-19 on people and goods movement particularly relevant to the supply chain.
- Continued to review and analyze NPMRDS RITIS data for monitoring TPM3 metrics and conducting major incident impact analysis

Expected Work

CRPC will

- Continue to implement second round of the Regional Traffic Counting Program project
- Collect, maintain, and analyze system wide traffic count data in coordination with the local agencies and LADOTD. Six vehicle classes based on the standard FHWA classification will be collected for classification counts. The data will be organized in a user-friendly electronic format, published on CRPC's website and will be available in both downloadable PDF format and as a dynamic web-based map integrated with google maps; and,
- Analyze the special vehicle classification counts collected during COVID-19 stay at home to understand the impact of the pandemic on people and goods movement.
- Implement the second round of the Regional Pavement and Asset Data Collection project
- Develop and advertise an RFP soliciting service for conducting a two-year regional pavement and asset data collection program for 2020 and 2021,
- Coordinate with the selection committee to review and rank the responses. Forward the recommendation to the MPO TAC and TPC committees; and,
- Coordinate with selected consultant to finalize the scope of work and kickoff the data collection process.
- Continue to analyze the acquired data to produce details including but not limited to the following:
 - Average historic speed and total travel time by travel direction, by month, day of week and time-period based upon user-selected segment, corridor, or network,
 - Average historic daily speed profile by travel direction and day of week for a user-selected segment, corridor, or network,
 - Mapping of average historic speed data set; and,
 - Calculate travel time statistics for a designated segment, corridor, or network, such as Travel Time Index, total delay, average delay per commuter, etc.
- Collaborate with LADOTD and coordinate with the local governments to establish a Pavement Management Strategy for the CRMPO region. The purpose of this strategy is to collect, maintain and analyze pavement condition data on both state systems and non-system roads. This will enable the local agencies and CRPC to use quantitative measures for prioritizing system preservation projects and investments. CRPC staff will also provide technical assistance to local agencies that do not have in-house expertise to process and analyze the pavement condition data
- Continue to collaborate with LADOTD, collect crash data and analyze the data to identify high crash intersections, corridors, and other hot spots for all modes of travel as explained under Task A-10

Performance Measures

- Updated Traffic Count Data and Map
- Implementation and collection of new inventory data (average speed and pavement condition)

Results/Products

- Updated repository of traffic count, crash, average speed and travel time, and pavement condition data
- Implementation of traffic counting and pavement and asset condition data collection projects

Funding Summary

UPWP Task PL B-2 Budget	
Funding Source	Amount (\$)
HWA Planning (PL)	\$145,072
HWA Excess PL	
TP>200K	
Local Match	\$36,288
Total Budget	\$181,340
Labor	Amount (\$)
CRPC Staff	\$41,840
Consultants/Software	\$139,500

Timeline

Q1 - Q4
Jul 1, 2022
to
June 30, 2023

- Continue to implement bike/ped and traffic count data collection
- Advertise RFP and selection consultant for Pavement and Asset Condition data collection and implement data collection
- Gather and analyze data related to ITS assets, NPMRDS etc.

Task C1: Transportation Plan Reappraisal

This task addresses periodic reviews, changes, and progress on the long-range planning process to foster livable and sustainable communities and transportation systems in the CRMPO area as required by the FAST Act and previous legislation.

Objectives

- To develop and maintain a multi-modal regional Metropolitan Transportation Plan (MTP) for the CRMPO area that conforms to air quality regulations, supports the federal planning factors and is consistent with federal, state, and local regulations
- To ensure that the MTP promotes a performance-based approach, is consistent with local comprehensive plans and goals, and supports livable and sustainable communities

Previous Work/Accomplishments

- Participated in MOVEBR prioritization committee meetings, provided feedback on the methodology, and scored the projects
- Continued to meet with elected officials and stakeholders to understand and discuss the transportation priorities for the Capital Region
- Coordinated with local transit agencies, LADOTD, FHWA, FTA, local agencies, and other identified stakeholders and public to identify multi-modal projects that are financially feasible, have minimal impacts on air quality, consistent with regional goals, address equity and environmental justice issues.
- Began collaboration with Louisiana State University and Southern Methodist University to consider opportunities to integrate CRPC's Travel Demand Model and the Amite River Watershed HUC 8 Model to explore ways to consider stormwater management in transportation project selection.

Expected Work

CRPC will

- Engage and coordinate with transportation partners, local governments, non-profit organizations, businesses, and the public to build consensus and a unified vision utilizing a 3C planning process for regional projects in the capital region that will:
 1. Support the economic vitality of the metropolitan area, especially by enabling global competitiveness, productivity, and efficiency,
 2. Increase the safety of the transportation system for motorized and non-motorized users,
 3. Increase the security of the transportation system for motorized and non-motorized users,
 4. Increase the accessibility and mobility of people and for freight,
 5. Protect and enhance the environment, promote energy conservation, improve the quality of life, and promote consistency between transportation improvements and state and local planned growth and economic development patterns,

Unified Planning Work Program 2023

6. Enhance the integration and connectivity of the transportation system, across and between modes, for people and freight,

7. Promote efficient system management and operation,

8. Emphasize the preservation of the existing transportation system,

9. Improve the resiliency and reliability of the transportation system,

10. Reduce or mitigate storm water impacts of surface transportation,

11. Enhance travel and tourism,

12. Incorporate Performance Based Planning and Programming; and,

13. Provide Ladders of Opportunity.

- Disseminate information about CRMPO's Metropolitan Transportation Plan (MTP) 2046. Track implementation of MOVE 2046 and process any amendments, if necessary, as long as such amendments are approved by the TPC and do not jeopardize the air quality conformity determination

- Monitor the progress and work with local transit agencies, LADOTD, FHWA, FTA and other agencies to ensure timely implementation of the projects identified in the MTP

- Reevaluate and refine the CMP based on the real-time travel and speed data. The process will include identifying and prioritizing new congested corridors and strategies

- Develop the GIS and electronic database of the MTP projects and information and publish interactive maps on CRPC's website

- Track, review and evaluate any new planning initiatives and activities related to transportation either directly or indirectly in the CRMPO area for consistency with the MTP

- Incorporate policy and project recommendations from the updated Regional Bicycle Pedestrian Plan

- Continue to collect, maintain, and analyze regional information on topics including but not limited to, census, land use and related data that will be used in regional demographic forecasting, transportation planning, land use planning, air quality planning, emergency planning, Title VI, and economic development efforts

Performance Measures

- Timely Implementation of projects in MOVE 2046, Regional Bicycle & Pedestrian Plan, and TIP FY 2023-2026

- Coordination with various stakeholders regarding MTP2046 Update, Regional Bicycle & Pedestrian Plan, and TIP FY 2023-2026

Results/Products

- Stakeholder, transportation partners and public input on Regional Bicycle & Pedestrian Plan, and TIP FY 2023-2026

Unified Planning Work Program 2023

- o Implementation of MTP MOVE 2046, Regional Bicycle & Pedestrian Plan, and TIP FY 2023-2026

Funding Summary

UPWP Task PL C-1 Budget	
Funding Source	Amount (\$)
FHWA Planning (PL)	\$19,908
FHWA Excess PL	
TIP>200K	
Local Match	\$4,997
Total Budget	\$24,885
Labor	Amount (\$)
CRPC Staff	\$24,885
Consultants, Travel, Software	\$0

Timeline

Q1 - Q4
Jul 1, 2022
to
June 30, 2023

- Engage and coordinate with transportation partners, local governments, non-profit organizations, businesses, and public to build consensus and a unified vision utilizing a 3C planning process for regional projects in the capital region
- Monitor progress of the current approved long range plan and bike/ped. plan

Task D3: Technical Assistance (Highway)

The purpose of this task is to utilize the expertise and knowledge of the CRPC and LADOTD staff in providing technical support services to local governments and interested citizens on transportation planning and other requests that support the FAST Act planning factors.

Objectives

- To provide technical assistance to various public and private entities on tasks listed in the UPWP and any other issues that support the FAST Act planning factors and promotes regional sustainability, livability, safe and secure multi-modal mobility, environmental quality, and economic vitality

Previous Work/Accomplishments

- Per LADOTD requests on I-10 widening EA, provided modeling analysis for the currently planned College Flyover Ramp for years 2022 and 2042 with GIS display.
- Per LADOTD requests provided modeling helps to analyze/compare two improvement scenarios in Ascension Parish to determine if widening LA 73 from LA 621 to LA 74 will improve network operations
- Per LADOTD requests worked and provided assistant for 2022 EC+I-10 modeling data
- Per LADOTD requests worked and provided scenarios analysis forecasting both AM and PM traffic at I10 and LA 415 interchanges with and without LA415-LA1 Connector for years 2015 & 2042 with GIS display
- Per LADOTD request, provided modeling analysis results for the Hooper Road widening project.
- Per Entity requests worked and provided assistant for 2018 Vehicle Classification counts
- Per Entity requests on MOVEBR US61/Germany Rd, worked and provided intersection turning movements and growth rates.
- Per LADOTD requests on LA621/Roddy Rd and LA 933/Roddy Rd. intersections, worked and provided intersection turning movements and growth rates.
- Per Entity requests on amended MOVE2042 Plan, worked and provided following MPO traffic and transportation data information with GIS display
- 2015 Network Base-year Daily Volume.
- Model Forecasted Street Network Daily Volume for 2042 EC/No-Build Condition,
- Model Forecasted Street Network Daily Volume for 2042 Build Condition
- Per LADOTD's consultant requests, worked and provided GIS maps and lists of all planned projects of most recent MOVE2042 Amendment.
- Per request from MOVEBR project team regarding intersections' daily and AM/PM peak time turning movements as well as traffic growth, provided modeling analysis for many different intersections. Such as, Jones Creek at Airline, Jones Creek @ Tiger Bend, Jones Creek Extn at Jefferson, Jones Creek Extn at Airline, Sherwood Forest/Greenwell Springs, Sherwood Forest/Joor

Unified Planning Work Program 2023

Rd, Ardenwood/Lobdell, Ardenwood/Ardenwood, intersections along Bluebonnet include @ Blue Cross; @ I-10 WB Ramp; @ I-10 EB Ramp; @ Mall 1 Entrance/ Proposed Dijon Extn.; @ Mall 2 Entrance/ Picardy; @ Mall 3 Entrance; @ Anselmo; @ Perkins Road, and many others, etc.

- Per Entity's requests provided instructions about the formulas that were used in the modeling analysis for setting roadways' capacities for various street functional classifications.
- For the convenience to MPO entities and stakeholders review and download LRTP amendment related all projects and modeling results by planning stages, created GIS maps for staff to post on CRPC's website displaying analysis results made for MOVE2042 Amendment. The GIS Maps include Base Year existing condition, future no-build condition, and future build condition.
- COVID-19 impact and traffic analysis and GIS maps for truck routes within MPO boundary
- Responded to requests from consultants, local governments, and state governments to assist with transportation and traffic modeling efforts regarding construction projects and provide statistics such as projected traffic volumes to consultants and citizens
- Continued to provide data and technical assistance to the Cities of Denham Springs and Baker to aid in their recovery planning process
- Provided technical assistance to the City of Plaquemine to help them update and modernize their zoning ordinance. Met with city to discuss/prioritize second round of amendments. Completed initial draft of recommendations and presented to the city leadership for comment
- Annual review of the goals/objectives in the 5-year regional CEDS which is now renamed LEAD - Linking Economic Assets for Development
-
- CRPC took a statewide leadership role in cooperation with DOTD in an Every-Day Counts 5 initiative on Value Capture. This FHWA initiative explores the many ways that local communities can leverage the economic benefit of infrastructure investments. Future seminars for local governments and a tool kit will be presented in the coming year
- Other Technical Support to member entities, public, and stakeholders
- Baker Park n Ride,
- Vanpool Study,
- Plank-Nicholson BRT project,
- New Mississippi Bridge analysis to support Capital Area Bridge District,
- MOVEBR Project Prioritization,
- CATS Service Changes,
- EBR LRSP; and,
- Numerous modeling requests from DOTD and local governments.

Expected Work

CRPC will

- Coordinate with LADOTD and derive current traffic data from existing assignments or actual traffic inventories for facility design purposes. Projection of future traffic assignments will be derived using the regional travel demand model. Blanket or ground counts of the existing traffic volumes will be used to assure accuracy of traffic assignments
- Provide analysis of specific transportation problems upon the request of local units of government. Proposed changes to the highway network will be analyzed using the regional travel demand model. Information obtained through these analyses can be used in the update of the TSM System and Long-Range Plan. CRPC staff, as a technical arm to local governments, public and private entities, will develop and implement short-range planning programs/projects on an as needed basis. This task provides CRPC staff with a means to respond to local urban policy issues.
- Provide technical assistance to local entities to develop projects and programs under the FAST Act. Where the need for a FAST Act major metropolitan transportation investment is identified, corridor or sub-area studies shall be undertaken to develop or refine the plan for design concept and scope of the project
- Continue to provide the progress and status of emphasis areas of the FAST Act, the CAA of 1990 and other mandated state and federal requirements to the TAC, TPC, and other entities. Items such as deadlines, schedules and required responses from the local governments to such requirements will be prepared by CRPC
- Provide reliable information on current and projected usage and performance of transportation systems. This information is a critical part of the planning process that supplies credible information to decision-makers to support preparation of plans and programs that respond to each locality's unique needs and policy issues. Staff will seek training courses on topics which are available through NTI and NHI to enhance and maintain their technical capacity
- Provide technical assistance on various transit issues such as intermodal planning and bus rapid transit route planning
- Provide technical assistance to local governments, private businesses, non-profits and citizens on any tasks or requests that support the FAST Act as well as IJJA planning factors
- Attend, if available, workshops, conferences, and training to improve efficiency and skills under this work program task
- Solicit third party professional services to support any of the planning tasks, if necessary

Performance Measures

- Increased and improved technical support activities

Results/Products

- Reports/presentations with maps, tables, charts, and illustrations in hard copy as well as electronic form of analyses

Funding Summary

UPWP Task PL D-3 Budget	
Funding Source	Amount (\$)
FHWA Planning (PL)	\$58,408
FHWA Excess PL	
STP>200K	
Local Match	\$14,602
Total Budget	\$73,010
Labor	Amount (\$)
CRPC Staff	\$73,010
Consultants, Travel, Software	\$0

Timeline

Q1 - Q4
Jul 1, 2022
to
June 30, 2023

- Provide technical assistance to various public and private entities on tasks listed in the UPWP and any other issues that support the FAST Act planning factors and promotes regional sustainability, livability, safe and secure multi-modal mobility, environmental quality and economic vitality.

Task D4: Technical Assistance (Public Transit)

The purpose of this task is to provide technical assistance to public transit providers and local units of government in the region to create a regionally seamless transit system that improves accessibility and mobility for all citizens.

Objectives

- Facilitate cooperation among regional transit providers to create a regionally seamless transit system
- Provide technical assistance to CATS, assisting them with planning and operations by providing quick response studies, revenue analyses, equity analyses, automation of their operations, and other tasks as needed

Previous Work/Accomplishments

- Performed transit equity analysis of existing routes for CATS and conducted associated equity analysis for proposed new routes and service changes
- Completed the feasibility and site design study for the Baker Transportation Park n Ride / Transportation Center project. Procured design services for site evaluation and planning purposes
- Coordinated closely with City of Baker, FTA, CATS, and the consultant to ensure that all the work performed meets the federal requirements,
- Selected and procured the site for the Baker Transportation Center; and,
- Developed designs that will accommodate easy ingress and egress for transit buses and included other amenities that provide ease of access to all passengers.
- Kicked off Ferry Feasibility Study to consider viability of introducing ferry service between East and West Baton Rouge parishes, began stakeholder meetings, developed technical advisory committee participants, and began existing conditions analysis.
- Developed and maintained transit element in the BR MPO's MTP and TIP in coordination with regional transit providers
- Provided technical assistance and GIS maps for route changes and demographic analysis to support implementation of CATS Service Improvement Plan
- Developed a new transit element design for the BR MPO's MTP and TIP
- Worked with CATS to develop an innovative design for updating and maintaining grant funding
- Attended and participated in CATS weekly service change meetings
- Researched grant opportunities and assisted CATS in developing grant applications for funding

Unified Planning Work Program 2023

- Updated the CATS Title VI document with the latest available data
- Provided technical assistance to CATS regarding National Transit Database (NTD) Data Collection and Surveys
- Collected year-round manual passenger count for weekdays, Saturdays, Sundays, and LSU routes
- Developed and updated the survey sheets (routes and stops) to reflect the actual route-stop distances and stop structure,
- Analyzed the manual passenger count data to calculate unlinked passenger miles, total passenger miles, average passenger trip length, directional route miles and other NTD reporting related data; and,
- Conducted ad-hoc special surveys based on request from CATS.
- Nicholson-Plank BRT Project
- Participated in meetings with EBR RDA, City/Parish, and other stakeholders and provided input as part of the Nicholson-Plank BRT project,
- Reviewed and provided feedback on the BUILD grant funding structure,
- Identified federal sources of funds to meet the BUILD grant requirements; and,
- Reviewed and provided various Environmental reports that were develop for this project
- Staff attended workshops, conferences, and training to improve efficiency and skills for performing this task

Expected Work

CRPC will

- Complete and finalize the Baker Transportation Center / Park and Ride feasibility study. Coordinate with City of Baker, and CATS to move to the implementation phase of this facility.
- Identify regional transit expansion opportunities
- Complete a ferry feasibility study, to explore the potential of ferry service connecting East and West Baton Rouge Parishes,
- Study transit opportunities in other parishes in the urbanized area; and,
- Participate and provide input in discussions related to local and regional transit expansion projects. Provide technical assistance as needed.
- Coordinate transit planning with sidewalk planning, bike ways and land use considerations
- Collect relevant data needed for transit planning purposes
- Continue preparation of grants and assistance on request for proposals and IFBs

Unified Planning Work Program 2023

- Continue to provide technical assistance for preparing various FTA required reports such as Section 15, Quarterly Progress Reports, etc.
- Provide technical assistance as needed to public, private, and nonprofit organizations with regards to transit
- Consult regularly with CATS on all aspects of transit planning and operations. CRPC functions as the technical arm of CATS and, as such, provides studies and reports for the CATS Board. Issues that appear most prominent this year are service equity analysis, NTD reporting, service adjustments, and other requests as needed
- Provide technical assistance for the development of a COA and TDP
- Continue to provide technical assistance for service changes including conducting service equity analyses, updating maps and stops, and reviewing GTFS files
- Provide technical assistance in the analysis and implementation of BRT Lite / Express routes on Florida Blvd, Plank Rd, Nicholson Dr, and other regional routes
- Provide technical assistance and participate in the Commuter Krewe of Louisiana program to promote and implement park and ride and vanpool services
- Continue to collect updated GIS data and further enhance demographic data analysis capabilities to efficiently provide access to major employment centers, hospitals, shopping centers, public at large and disadvantaged citizens (Title VI/EJ/ADA)
- Stay current on transit grant opportunities and disseminate this information to interested parties
- Support the implementation of ITS technology for enhanced transit operations
- Continue to develop and maintain the transit element portion of the BRMPO's TIP and program of projects (POP)
- Track regional transit performance measures, goals, and objectives in the long range MTP in accordance with FAST ACT planning guidelines
- Coordinate with LADOTD Transit section and regional transit providers to update and monitor regional Transit Asset Management and Safety targets
- Attend transit workshops for training and best practices
- Assist CATS with the development of a Service Equity Analysis for the implementation of Mirco Transit for the City of Baker

Performance Measures

- Regional TAM and Transit Safety Targets
- Improved coordination among regional public transit providers
- Maps supporting Title VI and employment access analysis
- Percent of population within ¼ mile of a transit route with 30-minute or better headways

Results/Products

- Baker Transportation Center / Park n Ride Facility Feasibility Study Phase 2
- Ferry Feasibility Study Report
- Updated Coordinated Human Services Transportation Plan
- Comprehensive transit analysis along selected, regionally significant corridors
- Technical reports, analysis, and other documents as needed

Funding Summary

UPWP Task FTA D-4 Budget	
Funding Source	Amount (\$)
FTA 5303, 5310, 5311	\$150,975
FTA Carryover	\$149,641
CATS PL	\$50,000
Local Match	74,757
Total Budget	\$423,786
Labor	Amount (\$)
CRPC Staff	\$293,786
Consultants/Software	\$130,000

Timeline

Q1 - Q4
Jul 1, 2022
to
June 30, 2023

- Develop and complete Ferry Feasibility Study
- Develop detailed cost estimate to develop for the Baker Park n Ride / Transportation Center Phase 2
- Promote transit in the region and provide technical help to CATS

Task G1: Administration (Hwy)

The purpose of this task is to provide administration of the UPWP tasks funded by FHWA Planning Funds (PL).

Expected Work

CRPC will provide the administration of UPWP tasks funded by PL funds, including:

- Monitoring of work done under third-party contracts with CRPC,
- Development of future work programs,
- Preparing and submitting documents pertaining to FHWA and FTA joint certification,
- Preparing quarterly narratives/reports,
- Reviewing planning activities,
- Reviewing any other documentation required by FHWA; and,
- Reviewing and familiarizing with existing and new federal requirements related to transportation and air quality.

Results/Products

- Quarterly narratives
- Expenditure reports
- Routine correspondence
- Administrative record keeping
- Billings and activities pertaining to FHWA funded tasks

Funding Summary

UPWP Task PL G-1 Budget	
Funding Source	Amount (\$)
FHWA Planning (PL)	\$30,700
FHWA Excess PL	
STP>200K	
Local Match	\$7,675
Total Budget	\$38,376
Labor	Amount (\$)
CRPC Staff	\$38,376
Consultants/Software	\$0

Task G2: Administration (Transit)

The purpose of this task is to provide administration of the UPWP tasks funded by FTA funds.

Expected Work

CRPC will Provide the administration of UPWP tasks funded by FTA funds. Included in the work effort will be

- Monitoring of work done under third-party contracts with CRPC,
- Development of future work programs,
- Preparing and submitting documents pertaining to FHWA and FTA joint certification,
- Preparing quarterly narratives/reports,
- Reviewing planning activities,
- Reviewing any other documentation required by FTA; and,
- Reviewing and familiarizing with existing and new federal requirements related to transportation and air quality.

Results/Products

- Quarterly narratives
- Expenditure reports
- Routine correspondence
- Administrative record keeping
- Billings and activities pertaining to FTA funded tasks

Funding Summary

UPWP Task FTA G-2 Budget	
Funding Source	Amount (\$)
FTA 5303	\$21,111
FTA Carryover	\$2,500
CATS PL	
Local Match	\$6,300
Total Budget	\$31,498
Labor	Amount (\$)
CRPC Staff	\$31,498
Consultants/Software	\$0

Task H1: Travel Demand Management (TDM)

Objectives

The purpose of this task is to implement Travel Demand Management (TDM) strategies to influence individual travel behavior and provide expanded options to reduce the actual demand, or number of vehicles, operating on regional roadways incorporating practices that focus on alternative modes of commuting.

Previous Work/Accomplishments

- Ongoing outreach to work partners across the region to sign new partners to Commuter Krewe.
- Developed onboarding manual for new employees of Commuter Krewe Partners
- Developed strategy for outreach to Public Schools: emphasis on Central Schools to begin with as well as Public/private schools throughout the MPO. This also includes SES providers (facilitators of after school programs) Focus on school outreach with COVID Phase II and III roll out.
- Developed Online marketing content that pertains to COVID
- Continued Promotion of Ride Pro Instructional Videos
- Developing Marketing Content for outreach to schools
- Developed Online marketing content that pertains to COVID
- Continued Promotion of Ride Pro Instructional Videos
- Developing Marketing Content for outreach to schools
- Secured space for 6 new billboards.
- What's in the Box Campaign? advertisements reached 8,301 total people, 922 total through plays video, and the prize drawings had 167 total attendees.
- Developed Mini telework campaign to support partnering agencies for the remainder of the pandemic
- Provided one on one outreach to individuals in the database regarding ride match opportunities.
- Began "app" development and testing for Commuter Krewe ride match and tracking.
- Preparing for campaign for "app" launch.
- Drafted analysis paper for lessons learned from COVID telework and potential effects on commute patterns.

Expected Work

CRPC, in coordination with LADOTD, selected a consulting firm to develop an outreach program for TDM on a broader scale. The following components are commensurate with successful programs nationwide.

- Outreach at major universities within the MPO area to enhance presence at the collegiate level. Outreach/ implementation strategies based upon demand at the local level
- Increased outreach with K-12 schools with targeted outreach/ implementation based upon demand

Unified Planning Work Program 2023

- Specific outreach implementing the program at local and state government Agencies.
- Implementation of Guaranteed Ride Home and other ridesharing incentives
- Implementation of staggered shifts/compressed work weeks
- Promotion and increasing participation in the worksite carpool/vanpool programs
- Quarterly state-wide MPO/DOTD TDM call-in learning session

The scope of work includes the following major tasks:

- Task 1.0 – Project Management, Work Plan Monitoring, Review of Deliverables
 - Program evaluation of Ride Pro Platform with program recommendation for continuation of Ride Pro or Request for Proposals for a new platform,
 - An updated Project Execution Plan,
 - Monthly project reports, including percentage completed by task,
 - Attendance at 6 MPO Technical and Policy Committee Meetings; and,
 - Attendance at Monthly Baton Rouge Clean Air Coalition Meetings (subcommittee formed to focus on worksite outreach at plants for the Commuter Krewe program).
- Task 2.0– Outreach Implementation
 - Continued outreach to existing worksites as well as potential new partners,
 - Increased emphasis on industrial plants,
 - Increased outreach at the University level,
 - Increased presence at Southern University and LSU Football Games,
 - Emphasize “Try It Days “with at least 4 worksites per year,
 - Development of Videos for general promotion and onboarding new partners; and,
 - Development of outreach program specific to local schools. Consultant will choose up to ten schools to study congestion mitigation techniques specific to K-12 Schools that are within a 5-mile radius of each other.
- Task 3.0 - Demonstration of Program long term Strategy Development and Software Analysis
 - Quarterly Learning Sessions, including notifications and presentation materials developed as part of a thorough learning program,
 - Support in the facilitation and management of Ridepro Software, Explore the possibility of issuing an RFP for a new software platform, organize a sub-committee to explore that possibility with recommendations for management under a statewide platform; and,
 - Professional development for agency staff (Attendance at annual Association for Commuter Transit Conference, Participation in annual classes / trainings, and other training as needed).

Results/Products

- Updated project execution plan
- Development of TDM Programs with all 5 Parish Governments within the MPO
- Increase in the number of participants within industrial facilities

Unified Planning Work Program 2023

- Program Launch at with educational partners
- Launch of ride tracking “app.”
- Continued outreach and campaigns
- Participation in the MPO and Clean Air Coalition meetings
- Monthly project reports

Funding Summary

UPWP TDM H-1 Budget	
Funding Source	Amount (\$)
TP>200K	\$665,000
HISPPEN	
CMAQ	
Local Match	
Total Budget	\$665,000
Labor	Amount (\$)
CRPC Staff	\$215,000
Consultants/Software	\$450,000

Task H3: Regional SHSP Implementation

Louisiana's Strategic Highway Safety Plan (SHSP) is a plan to reduce traffic fatalities and injuries on Louisiana's roadways through widespread collaboration and an integrated 4E approach: engineering, education, enforcement, and emergency services. The vision of the SHSP is Destination Zero Deaths and the goal is to reduce the number of fatalities by half by the year 2030.

The development, implementation, and updating of the SHSP was first required under SAFETEA-LU, which established the Highway Safety Improvement Program (HSIP) as a core federal program. Moving Ahead for Progress in the 21st Century (MAP-21) continued the HSIP as a core Federal-aid program and the requirement for states to develop, implement, evaluate, and update a SHSP that identifies and analyzes highway safety problems and opportunities on all public roads. MAP-21 also introduced a performance management framework that was continued with the Fixing America's Surface Transportation (FAST) Act. The FAST Act also continued the HSIP and SHSP requirement. Final regulation requires states to set annual targets for the HSIP and they must be coordinated with the Highway Safety Plan (HSP). FAST Act requires that the SHSP is developed after consultation with a broad range of safety stakeholders, which includes regional transportation planning organizations and metropolitan planning organizations (MPOs), if applicable; state and local traffic enforcement officials; county/parish transportation officials; other major federal, state, tribal, and local safety stakeholders, and other stakeholders as outlined in 23 U.S.C. 148(a)(12). Depending on the SHSP safety priority areas and strategies, additional partners such as representatives from the public health, education, and medical professions may be involved. MPOs are required to set annual targets but can choose to adopt the state targets or develop their own.

Louisiana has established a two-pronged approach for implementation of the SHSP- statewide emphasis area teams that promote proven effective strategies through constantly evolving action plans and regional safety coalitions that implement those action plans at the local level. A regional safety coalition coordinator is a critical component of implementation of the SHSP at the local level.

To regionally implement and sustain the SHSP, it is necessary to provide funding for regional safety coalition coordination through the Capital Region Planning Commission. The primary task of this sponsor/state agreement will be to implement and sustain the SHSP by bridging all gaps between DOTD district personnel, local governments, local law enforcement, the community, local civic organizations, emergency services/hospitals, school boards, tribal agencies, and other safety partners within the region.

Expected Work

Task 1.0 - Plan Development, Implementation and Evaluation

Research, collect and analyze safety data for project planning and development purposes. Develop and sustain a data-driven plan and program to address the emphasis areas of the SHSP utilizing the 4 E approach. If emphasis areas or strategies in the plan are different than the emphasis areas or strategies in the statewide SHSP, justification through data shall be provided. Status reports shall be submitted to LADOTD monthly along with the invoices. Performance measures and targets shall be established in accordance with FAST Act and formally adopted by the MPO on an annual basis and implementation progress in meeting these targets shall be reported monthly with the progress reports.

For the Infrastructure and Operations Emphasis Area, the regional safety coalition strategies should target focus crash types (e.g., roadway departures, intersections, non-motorized users) as determined through the SHSP process. Efforts to assess regional data should be made on an annual basis to determine focus crash types and the SHSP dashboards may be utilized in this task. On the state-owned network, coordination with the local DOTD district office and local public agency (LPA) is highly encouraged to facilitate safety project proposals as each District Administrator participates on the Highway Safety Project Selection Committee.

On the locally owned network, coordination with the LPA is necessary to facilitate local safety plan development and project applications for the Local Road Safety Program (LRSP) and Safe Routes to Public Places Program (SRTPPP) since the signature authority and responsible charge for any LRSP/SRTPPP project will be an employee of the LPA.

The MPO should help to facilitate local safety plan development that identify potential safety improvement sites using the crash data profiles provided by LADOTD Highway Safety and the Local Technical Assistance Program (LTAP) office. This local safety plan should include but is not limited to potential projects that may be funded under the LRSP and SRTPPP. The MPO is highly encouraged to help track project status and coordinate with the DOTD Project Managers and LPAs.

Task 2.0 – Local Road Safety Program, Safe Routes to School, and Safe Routes to Public Places Project Implementation

The MPO should assist the LRSP and SRTPPP project managers in keeping project status up to date. This includes maintaining contact with the Local Public Agencies in the region to keep an updated list of responsible charge persons for each entity, frequent correspondence to initiate Entity-State agreements, and following up on outstanding requests made by the Project Managers. Initiate LRSP/SRTPPP projects by using data provided through LTAP or DOTD and in coordination with the Local Public Agencies in the regions and this can be done using a plan as described in Task 1.0.

Parish wide Local Road Safety Plans for the Capital Region are needed to help identify and prioritize safety improvements on local roads. These plans will coordinate with the Baton Rouge MPO's Metropolitan Transportation Plan, the region's Regional Highway Safety Plan, and various local plans, including the parish comprehensive master plan. The Local Road Safety Plans build on DOTD's and LRSP's parish profile by including multi-disciplinary stakeholder outreach and coordination,

developing a system of data-driven project prioritization, identifying potential funding sources, and assisting the parishes with ongoing project application submittals.

The Capital Region Planning Commission (CRPC) will conduct traffic counts, analyze crash data, perform field visits, and determine the most appropriate safety counter measure on identified roadways and intersections identified in the Parish Profiles, coordinate with various stakeholders, prioritize a list of projects via crash rates and stakeholder input, and develop a funding and action plan to be followed by the Parishes and MPO for implementing the identified projects. Tasks to be performed by CRPC include:

Task 2.1: Project Identification

CRPC will identify projects using various data sources including crash data from the Crash 3 database, local parish profiles provided by the LRSP, and multi-disciplinary stakeholder outreach. These locations and the various crashes will be mapped out in a Geographic Information System.

Task 2.2: Site Visits and Road Safety Assessments

CRPC will conduct site visits along each identified roadway and each intersection. An effort will be made to include LADOTD, local law enforcement, and parish and municipal staff in each of these visits. These site visits will document the existing conditions, potential safety improvements that can be made along with countermeasures that are proven effective for each location.

Task 2.3: Identify Preferred Safety Countermeasures

CRPC will coordinate with local stakeholders to determine the preferred safety countermeasure at each identified location. Will include cost benefit-analysis using figures from the Highway Safety Manual. CRPC will coordinate with the MPO's Technical Advisory Committee and the Capital Region Transportation Safety Coalition's Infrastructure and Operations Subcommittee to ensure the appropriateness of each countermeasure.

Task 2.4: Develop Method of Prioritization

CRPC will coordinate with local stakeholders to determine the prioritization of implementing the identified countermeasures at each identified location. CRPC will coordinate with the MPO's Technical Advisory Committee and the Capital Region Transportation Safety Coalition's Infrastructure and Operations Subcommittee.

Task 2.5: Identify funding sources

CRPC will identify available funding sources, inclusive of LRSP funding. CRPC will outline the process of project application for each identified funding source.

Task 2.6: Development of Staged Implementation Plan

CRPC will develop and document a standard evaluation or screening methodology and approach to use in documenting high priority crash locations, crash types, and identifying appropriate countermeasures. Recommendations for countermeasure options for each project will be included.

Task 2.7: Create an Evaluation Methodology

CRPC will develop a Parish specific evaluation methodology based on input from respective stakeholders from Parish government, LADOTD District/HQ and public officials.

Task 2.8: Local Road Safety Plan Document

A draft of the report with documentation of all the above tasks will be submitted to the I/O sub-committee and local parish/municipality for review. The report will include at a minimum: a purpose and need statement; information and maps of the prioritized road segments and/or intersections; preliminary findings from the site analysis and crash data review; a description of the proposed countermeasures with preliminary cost estimates; and a staged improvement plan. The reports will be updated as new crash data becomes available.

The final plan (incorporating any comments received) will be submitted to the local government for approval and adoption. CRPC will draft a resolution for use by the local government and will present a summary of the analysis upon request. A plan completion/ adoption matrix will be added to the Capital Region Transportation Safety Coalition plan to track progress on this task.

Task 3.0 – GIS

Data compilation and analysis, DDACTS, crash data, liaison with state data office and MPO, local jurisdictions, and parishes; provide maps and graphics for the MPO, parishes, and local jurisdictions and agencies for problem identification, meetings, etc. Coordination with the DOTD Data Collection and Management unit for updating the roadway and traffic data is encouraged.

Task 4.0- Partnerships and Advocacy

Develop partnerships with LADOTD, LHSC, LSP, local law enforcement agencies, the cities/parishes, emergency services, school board officials, elected officials, tribal agencies, and other safety advocates to promote the SHSP and seek out highway safety related activities within the region. Efforts to develop new partnerships should be conducted monthly. Routine visits to coalition partners are expected.

Task 5.0 –Marketing and Education

Create social media presence (Facebook, Twitter, YouTube) and administer the flow of communication. Participate in all national campaigns developed by the National Highway Traffic Safety Administration via social media, press releases and media outlets. Participate in Louisiana's Communication Coordinating Council and coordinate efforts to ensure consistent messaging. Incorporate the DZD branding (use the logo) in all marketing materials. Identify and establish good

professional relationships with local media stations (radio, print and TV), LADOTD's Public Information Officer (PIO), and other traffic safety PIOs. Distribute meeting announcements, newsletters, press releases or any type of safety campaign material to all current and potential safety partners. Brand the regional safety coalition with the Destination Zero Deaths logo. Conduct education outreach efforts to inform the public about safety, particularly in the SHSP emphasis areas. Participate in national transportation safety advertising campaigns, circulate public service announcements, and publish newspaper articles and online press releases within the region. Provide additional local outreach through collaboration with law enforcement and health agencies in promoting our activities within the SHSP emphasis areas using all forms of local media. Facilitate collaborative training sessions, webinars, or events on such transportation safety topics as passenger safety (i.e., Child Passenger Safety Training, Click It or Ticket Mobilization, etc.) and conduct public awareness campaigns that educate the public- pedestrians, bicyclists, motorists, and passengers about safety. Work closely with school boards to facilitate outreach and education of students within the SHSP emphasis areas.

Task 6.0 -Meetings and Conferences

Attend and participate during SHSP Implementation Team and Emphasis Area Team Meetings, Communications Coordinating Council, SHSP training, including but not limited to MPO, Parish and City Council meetings. Participation may include but is not limited to taking meeting minutes, coordinating with coalition members for meeting updates and reporting progress. Plan conduct and document regional safety coalition meetings. Full Safety Coalition meetings should be held quarterly at a minimum. Regional emphasis area team meetings are encouraged to be held monthly. It is the coordinator's responsibility to ensure minutes are recorded at monthly regional emphasis area meetings and full coalition meetings. Meeting minutes should be shared with coalition members prior to the next meeting. Solicit input from partners and team leaders to develop meeting agendas. Seek out national and statewide conferences to attend and participate in.

Task 7.0 – Road Safety Assessments

Coordinate Road Safety Assessments (RSAs) with the road owner(s). The Regional Safety Coalition Coordinator should set up the RSA date, time, location and ensure appropriate stakeholders are included. At a minimum, meeting notes should be recorded and provided to the road owner for RSA report development, but the coordinator may develop a draft report for distribution to the road owner. The road owner (LADOTD District office for state-owned roads and LPA for locally owned roads) will be the approver of the RSA report and no RSA report shall be documented or distributed without the road owner's knowledge.

Task 8.0- Administrative

Prepare, submit monthly invoices, and progress reports by the 20th of each month. If invoices are delayed, progress reports are to be submitted by the 20th of each month.

Previous Work/Accomplishments

Young Drivers

- Successfully completed regional young driver observational surveys at various schools within Capital Region. The total outreach has been more than 3000 students
- Recruited 9 new driving schools to the emphasis area team
- Outreach of more than 3000 new community partners via social media message sharing
- A regional website has been created to store virtual online presentations, lesson plans, and activity books
- Awarded a grant from State Farm to further finance the needs of the young driver efforts in capital region
- Regional safety PSAs were filmed, produced, and are located on the coalitions YouTube page
- Worked with state legislators to introduce HB 122 – traffic safety education in schools

Impaired Driving

- Successfully educated all judiciary teams on the support of ignition interlock laws
- Expanded Capital Region No Refusal into 4 nonparticipating parishes
- Reached over 5000 community partners via social media message sharing
- Created a Teen Driver website
- Recruited 5 new safety partners to the team
- Filmed Underage Drinking Safety PSA in partnership with Alcohol Beverage Control & LHSC
- Trained 14 new law enforcement officers in ARIDE training
- Hosted 2 alcohol and drugs webinars for community partners

Distracted Driving

- Installed no cell phone signage on all local roads in the City of Baton Rouge
- 2 distracted driving enforcement campaigns were conducted by Louisiana State Police
- 3 new agencies have adopted and developed a SHSP distracted driving company policy
- Reached over 5000 new community partners via social media message sharing
- Delivered presentation to State Representatives and Louisiana Board of Educators on the success of Capital Region lesson plans and activity booklets. The presentation will be used to help pass legislation to add transportation safety to Louisiana school curriculum.
- Developed distracted driving safety course via the Alliance Safety Council. Outreach to more than 20,000 companies
- Created distracted driving company policy educational video
- Supported legislation in hands free cell phone bills
- Successfully hosted several distracted driving regional contests
- Created distracted driving classroom lesson plans

Occupant Protection

- Continuing to educate low usage areas of the region on the importance of buckling up and the benefits of a seatbelt policy.
- Capital region has 16 FREE child seat fitting stations.
- Filmed Child Seat Safety PSA in partnership with LHSC, EBRSO, and LSP, and SADD
- Conducted regional child seat check community events
- Reached 2000 new community partners via social media message sharing
- Supported regional efforts in the Buckle Up In Your Truck campaigns
- Supported regional efforts in the Click It or Ticket campaigns
- Increased awareness through regional DA's office on traffic safety messaging and education
- Filmed, produced, and educated community partners on the importance of buckling up

Bike & Pedestrian Safety

- Reached 2500 new community partners via social media message sharing
- Hosted a regional Bike/Ped Safety Contest (Meme, Video, Drawing). Contest began Nov 16th - December 4th
- Filmed Bike & Pedestrian Safety PSAs in partnership with local LCI's (League Certified Instructors)
- Conducted outreach with local council men and women on providing bike lights to our regional homeless population
- Created framework for regional training in design guidance and Smart Cycling 101
- Recruited law enforcement officers to be trained in Title 32 bike safety laws
- Recruited 3 new community partners to join the team
- Recruited new regional team leader

Infrastructure & Operations

- Quarterly IO update newsletters are distributed to the IO team focusing on safety related efforts, current safety trends, targets, and IO regional projects.
- Local Road Safety Plan for EBR has been completed. The CRPC internal team will begin preparing implementation of the plan in 2021
 - Using Pre-Application forms from LTAP to identify attributes for high priority locations needed for submission
- Reached 1500 new community partners via social media message sharing
- Provide crash data dashboard tutorials to regional safety partners

Results/Products

- Updated Capital Region Transportation Safety Plan (CRTSP)
- Implementation of CRTSP Action Items
- Meetings and Conferences
- Marketing and Education
- Annual and Monthly Reports

Performance Measure

- Number of EA Meetings
- Number of goals achieved from the Action Plans for each EA
- Number of PSA's developed

Funding Summary

UPWP Task RSHSP H-3 Budget	
Funding Source	Amount (\$)
STP>200K	
HISPPEN	\$303,618
CMAQ	
Local Match	
Total Budget	\$303,618
Labor	Amount (\$)
CRPC Staff	\$303,618
Consultants/Software	\$0

Task SP-2: Regional Bike/Pedestrian Plan

Project Description

The purpose of this project is to develop a bicycle and pedestrian masterplan that will service the entire MPO area. This plan should incorporate recommendations from the existing Bicycle and Pedestrian Masterplans and local comprehensive plans as they relate to bicycle and pedestrian connectivity. The updated regional bicycle and pedestrian plan will identify regional policies and projects to improve nonmotorized access for users of all ages and abilities and will identify regionally significant projects for incorporation into the MTP update. Additional objectives should include:

- Improving Bicycle and Pedestrian Safety and connectivity along existing major transportation routes,
- Increasing Bicycle and Pedestrian Infrastructure within the MPO area,
- Identifying gaps within the existing network,
- Increasing the number of existing trails and off-road facilities,
- Identifying needs, challenges, and barriers to biking and walking within the MPO area; and,
- Ensuring regional connectivity within the MPO boundary.

Project Scope

The detailed scope, budget and timeline for this project is currently being worked on. Details about the scope of work and timeline will be incorporated as soon as they have been finalized.

The goal is to have the RFP published and finalize consultant selection by September TPC meeting with the aim of kicking off the project early October. The recommendations from this plan will feed into the long-range plan 2046 planning process.

Funding Summary

The goal is to have the RFP published and finalize consultant selection by September TPC meeting with the aim of kicking off the project early October.

UPWP Task SP-2 (Regional BPP) Budget	
Funding Source	Amount (\$)
TP>200K	\$38,400
PR	
CMAQ	
Local Match	\$9,600
Total Budget	\$48,000
Labor	Amount (\$)
CRPC Staff	\$0
Consultants/Software	\$48,000

Appendix A – TPC UPWP Approval Minutes

**Appendix B – Staff Positions Percentage of Time per Task
(FY 2022)**

Appendix C – Performance and Expenditure Report Summary (FY 2022)